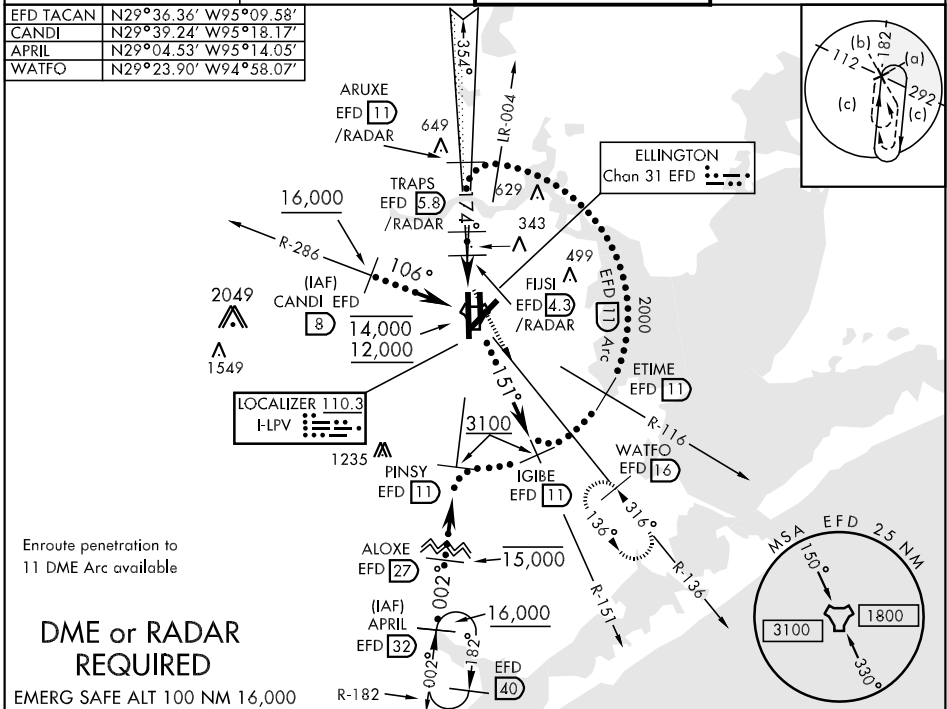


HI-ILS or LOC/DME RWY 17R

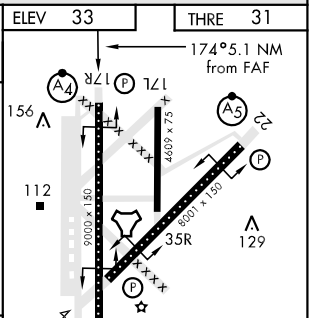
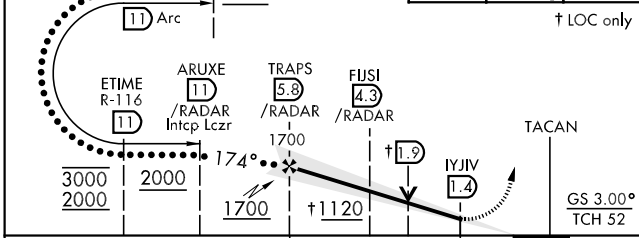
LOC I-LPV 110.3	APCH CRS 174°	Rwy Idg THRE Arpt Elev 9000 31 33	JAL-197 [USAF]	HOUSTON/ELLINGTON (KEFD)
* When ALS inop, increase CAT CDE RVR to 60 and vis to 1¼ miles. ** Circling not authorized W of Rwy 17R-35L.		MALSF A4	MISSED APPROACH: Climb to 700 then climbing left turn to 3100 on EFD R-136 to WATFO/EFD 16 DME and hold.	

ATIS 135.575 269.9	HOUSTON APP CON 134.45 284.0	ELLINGTON TOWER 126.05 253.5	GND CON 121.6 275.8
------------------------------	--	--	-------------------------------

EFD TACAN	N29°36.36' W95°09.58'
CANDI	N29°39.24' W95°18.17'
APRIL	N29°04.53' W95°14.05'
WATFO	N29°23.90' W94°58.07'



IGIBE R-151 (11) Arc	VGSI and ILS GP not coincident	700	3100	WATFO EFD (16)	ELEV 33	THRE 31
			R-136 EFD			



CATEGORY	C	D	E
S-ILS 17R	231/40	200 (200-¾)	
S-LOC 17R*	440/50	409 (500-1)	
CIRCLING**	500-1½ 467 (500-1½)	600-2 567 (600-2)	660-2¼ 627 (700-2¼)

HIRL Rwy 4-22 and 17R-35L
TDZL/CL Rwy 17R, 22 and 35L

HI-ILS or LOC/DME RWY 17R

SC-5, 07 FEB 2013 to 07 MAR 2013

SC-5, 07 FEB 2013 to 07 MAR 2013