

(ELD3.ELD) 13010

# EL DORADO THREE DEPARTURE

SL-197 (FAA)

HOUSTON/ ELLINGTON (EFD)  
HOUSTON, TEXAS

ATIS  
 135.575 269.9  
 GND CON  
 121.6 275.8  
 ELLINGTON TOWER  
 126.05 253.5  
 HOUSTON DEP CON  
 134.45 284.0

EL DORADO  
 115.5 ELD :--:  
 Chan 102  
 N33°15.37' - W92°44.64'  
 L-17, H-6

NOTE: RADAR Required.  
 NOTE: For aircraft destined MEM,  
 or filed via Q32 or J42.

LUFKIN  
 112.1 LFK :--:  
 Chan 58

ENJOY  
 N31°16.73'  
 W94°19.82'

MUSIQ  
 N30°33.16'  
 W94°53.53'

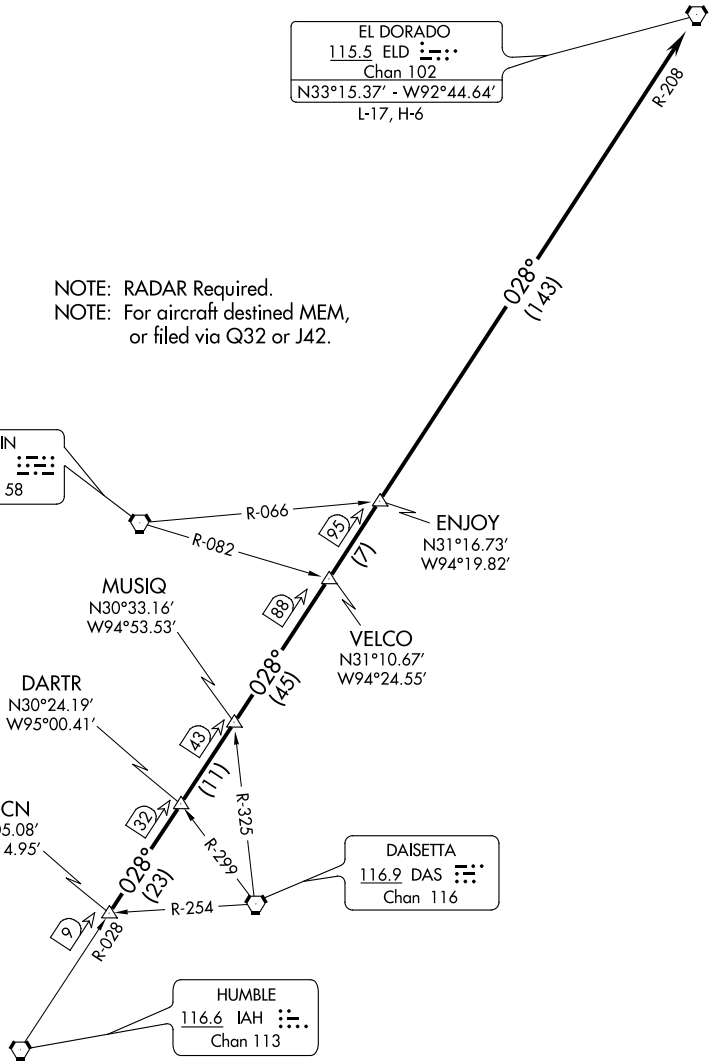
VELCO  
 N31°10.67'  
 W94°24.55'

DARTR  
 N30°24.19'  
 W95°00.41'

RAECN  
 N30°05.08'  
 W95°14.95'

DAISSETA  
 116.9 DAS :--:  
 Chan 116

HUMBLE  
 116.6 IAH :--:  
 Chan 113



TAKE-OFF MINIMUMS:  
 Rwy 4, 17L, 17R, 22,  
 35L, 35R Standard.

NOTE: Chart not to scale.

(NARRATIVE ON FOLLOWING PAGE)

EL DORADO THREE DEPARTURE  
(ELD3.ELD) 13010

HOUSTON, TEXAS  
HOUSTON/ ELLINGTON (EFD)

SC-5, 07 FEB 2013 to 07 MAR 2013

SC-5, 07 FEB 2013 to 07 MAR 2013