

CRIED FOUR DEPARTURE

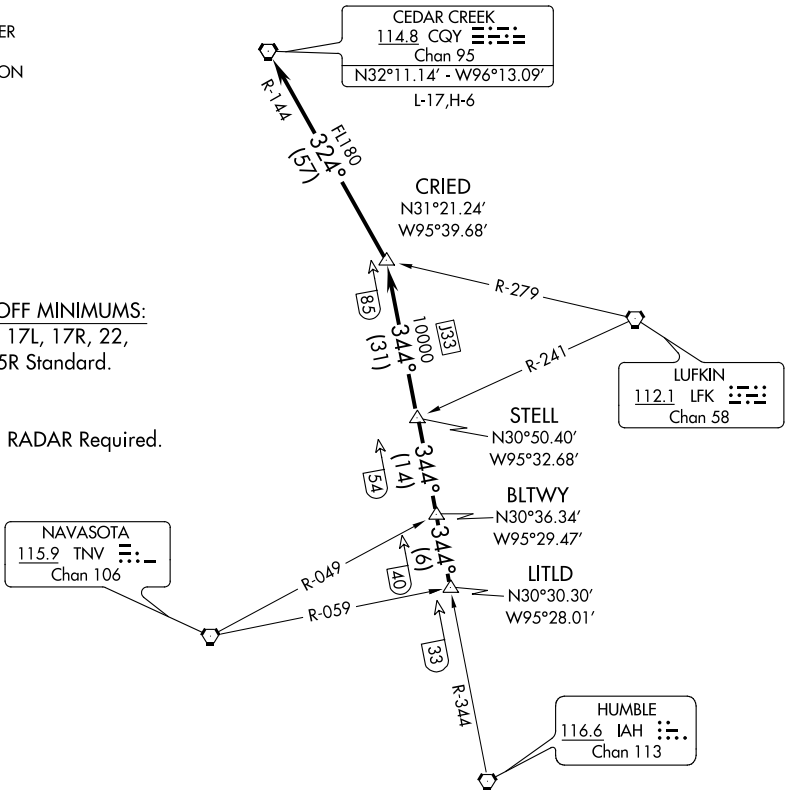
SL-197 (FAA)

HOUSTON/ ELLINGTON (E,F,D)
HOUSTON, TEXAS

ATIS
135.575 269.9
GND CON
121.6 275.8
ELLINGTON TOWER
126.05 253.5
HOUSTON DEP CON
134.45 284.0

TAKE-OFF MINIMUMS:
Rwy 4, 17L, 17R, 22,
35L, 35R Standard.

NOTE: RADAR Required.



TAKE-OFF OBSTACLES

- Rwy 17R, Pole 1489' from DER, 817' right of centerline, 40' AGL/74' MSL.
- Rwy 22, Antenna on building 1998' from DER, 598' right of centerline, 54' AGL/83' MSL. OL on GS 327' from DER, 543' left of centerline, 39' AGL/ 68' MSL.
- Rwy 35L, Multiple trees beginning 1118' from DER, 679' right of centerline, up to 37' AGL/77' MSL. Crane 2352' from DER, 1024' left of centerline, 37' AGL/97' MSL.
- Rwy 35R, Tree 1597' from DER, 32' left of centerline, 33' AGL/ 80' MSL.

NOTE: Chart not to scale.

DEPARTURE ROUTE DESCRIPTION

Climb on assigned heading for radar vectors to LITLTD INT, maintain 4000.
Expect filed altitude 10 minutes after departure, thence

. . . . via IAH R-344 to STELL INT, then via IAH R-344 to CRIED INT, then left turn via CQY R-144 to CQY VORTAC.

CRIED FOUR DEPARTURE

SC-5, 07 FEB 2013 to 07 MAR 2013

SC-5, 07 FEB 2013 to 07 MAR 2013