

VOR/DME HUL <b>116.1</b> Chan <b>108</b>	APP CRS <b>039°</b>	Rwy Idg THRE <b>483</b> Apt Elev <b>490</b>
--	------------------------	---

# VOR/DME RWY 5

HOULTON INTL (HUL)

⚠ When local altimeter setting not received, use Presque Isle altimeter setting and increase all MDA 100 feet; increase S-5 and Circling visibility Cat B ¼ mile and Cat C ½ mile. Circling NA southeast of Rwy 5 and 23. Procedure NA at night. Visibility reduction by helicopters NA.

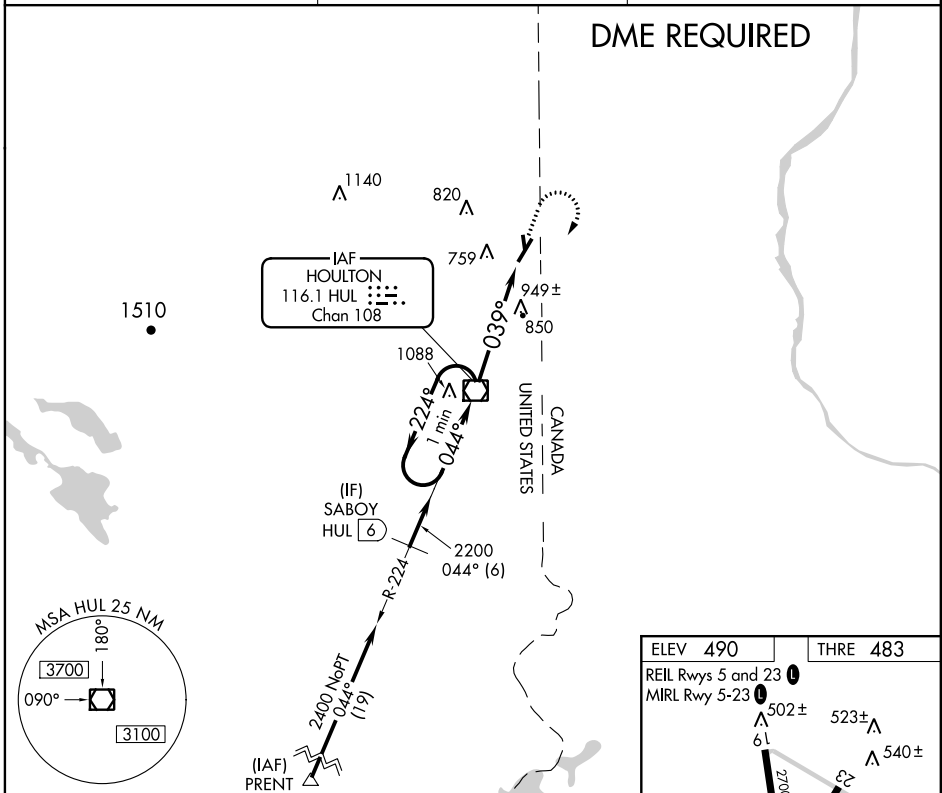
MISSED APPROACH: Climb to 1800 then climbing right turn to 2200 direct HUL VOR/DME and hold.

ASOS  
**132.025**

BOSTON CENTER  
**120.25 346.4**

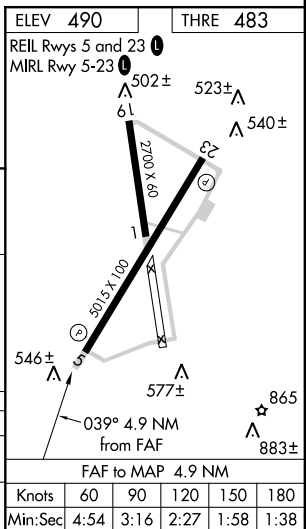
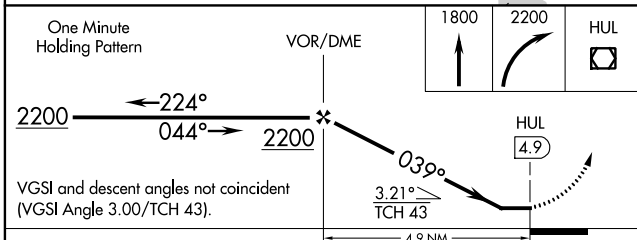
UNICOM  
**122.8 (CTAF) 0**

## DME REQUIRED



NE-1, 07 FEB 2013 to 07 MAR 2013

NE-1, 07 FEB 2013 to 07 MAR 2013



CATEGORY	A	B	C	D
S-5	1200-1	717 (800-1)	1200-2 717 (800-2)	NA
CIRCLING	1200-1	710 (800-1)	1200-2 710 (800-2)	NA