

WAAS CH 48820 W35A	APP CRS 352°	Rwy Idg 6002 TDZE 920 Apt Elev 930
--	------------------------	---

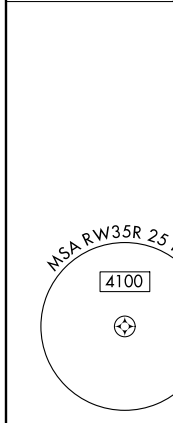
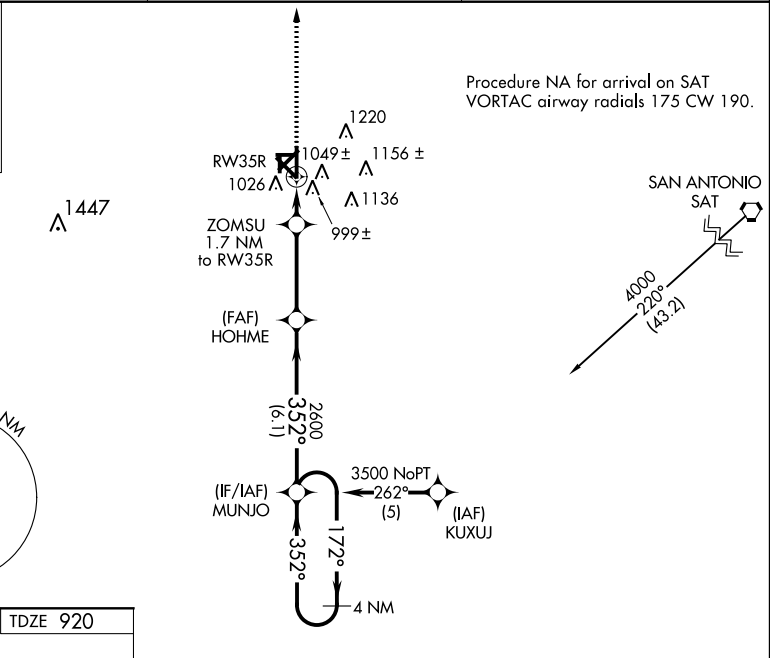
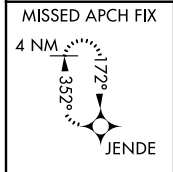
RNAV (GPS) RWY 35R

SOUTH TEXAS RGNL AT HONDO (HDO)

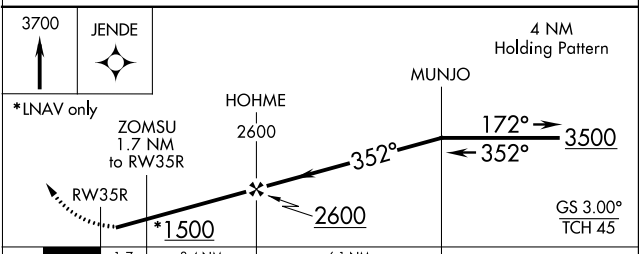
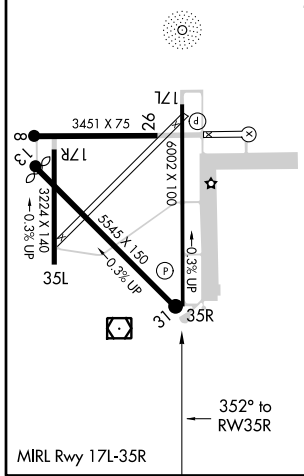
⚠ Baro-VNAV NA when using Castroville altimeter setting. For uncompensated Baro-VNAV systems, LNAV/VNAV NA below -16°C (4°F) or above 47°C (116°F). DME/DME RNP-0.3 NA. Visibility reduction by helicopters NA. When local altimeter setting not received, use Castroville altimeter setting and increase all DA 62 feet and all MDA 80 feet, increase LNAV/VNAV all Cats, and LNAV and Circling Cats C and D visibility ¼ mile.

MISSED APPROACH:
Climb to 3700 direct JENDE and hold.

ASOS 119.675	HOUSTON CENTER 134.95 269.4	UNICOM 122.725 (CTAF)
------------------------	---------------------------------------	---------------------------------



ELEV 930	TDZE 920
----------	----------



CATEGORY	A	B	C	D
LPV DA	1170-1		253 (300-1)	
LNAV/VNAV DA	1293-1¼		376 (400-1¼)	
LNAV MDA	1360-1	440 (500-1)	1360-1¼ 440 (500-1¼)	1360-1½ 440 (500-1½)
CIRCLING	1420-1	490 (500-1)	1580-1¾ 650 (700-1¾)	1580-2 650 (700-2)

SC-3, 07 FEB 2013 to 07 MAR 2013

SC-3, 07 FEB 2013 to 07 MAR 2013