

WAAS CH <b>69619</b> <b>W17A</b>	APP CRS <b>172°</b>	Rwy Idg TDZE Apt Elev	<b>6002</b> <b>929</b> <b>930</b>
--	------------------------	-----------------------------	---

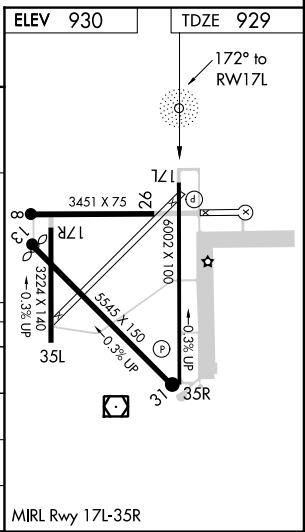
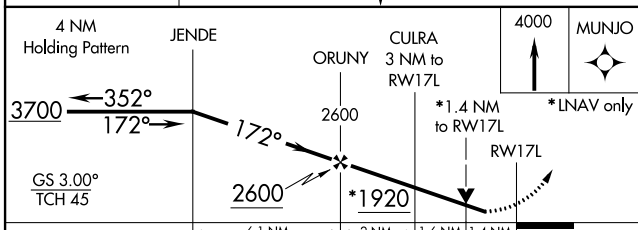
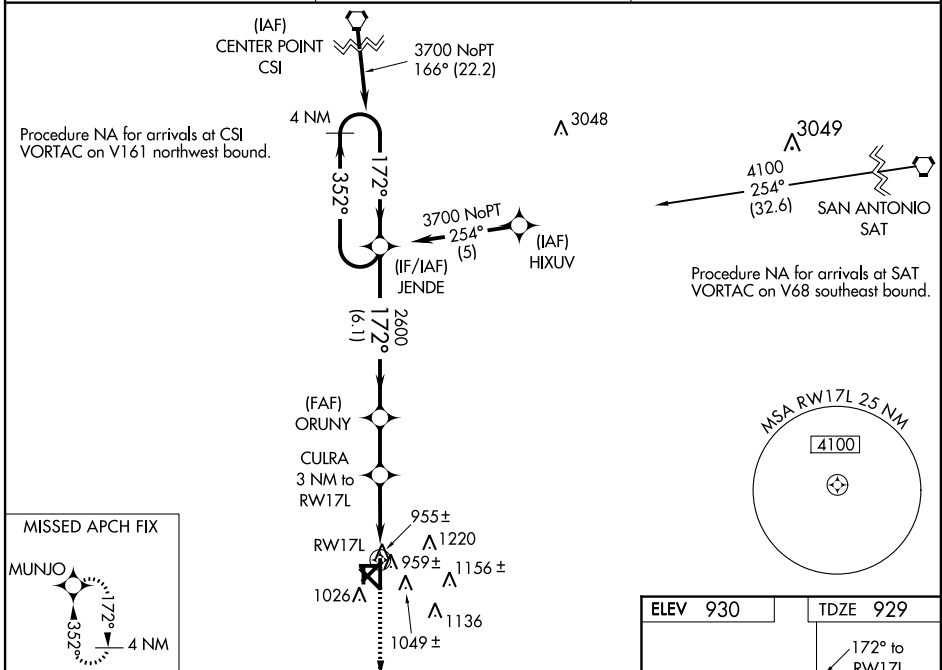
# RNAV (GPS) RWY 17L

SOUTH TEXAS RGNL AT HONDO (HDO)

**Baro-VNAV NA** when using Castroville altimeter setting. For uncompensated Baro-VNAV systems, LNAV/VNAV NA below -16°C (4°F) or above 47°C (116°F).  
**DME/DME RNP-0.3 NA.** Visibility reduction by helicopters NA. When local altimeter setting not received, use Castroville altimeter setting and increase all DA 62 feet and all MDA 80 feet, increase LNAV/VNAV all Cats, and LNAV and Circling Cats C and D visibility ¼ mile. VDP NA with Castroville altimeter setting.

**MISSED APPROACH:** Climb to 4000 direct MUNJO and hold, continue climb-in-hold to 4000.

ASOS <b>119.675</b>	HOUSTON CENTER <b>134.95 269.4</b>	UNICOM <b>122.725 (CTAF)</b>
------------------------	---------------------------------------	---------------------------------



CATEGORY	A	B	C	D
LPV DA		1179-1	250 (300-1)	
LNAV/VNAV DA		1314-1¼	385 (400-1¼)	
LNAV MDA	1420-1	491 (500-1)	1420-1¼ 491 (500-1¼)	1420-1½ 491 (500-1½)
CIRCLING	1420-1	490 (500-1)	1580-1¾ 650 (700-1¾)	1580-2 650 (700-2)

SC-3, 07 FEB 2013 to 07 MAR 2013

SC-3, 07 FEB 2013 to 07 MAR 2013