

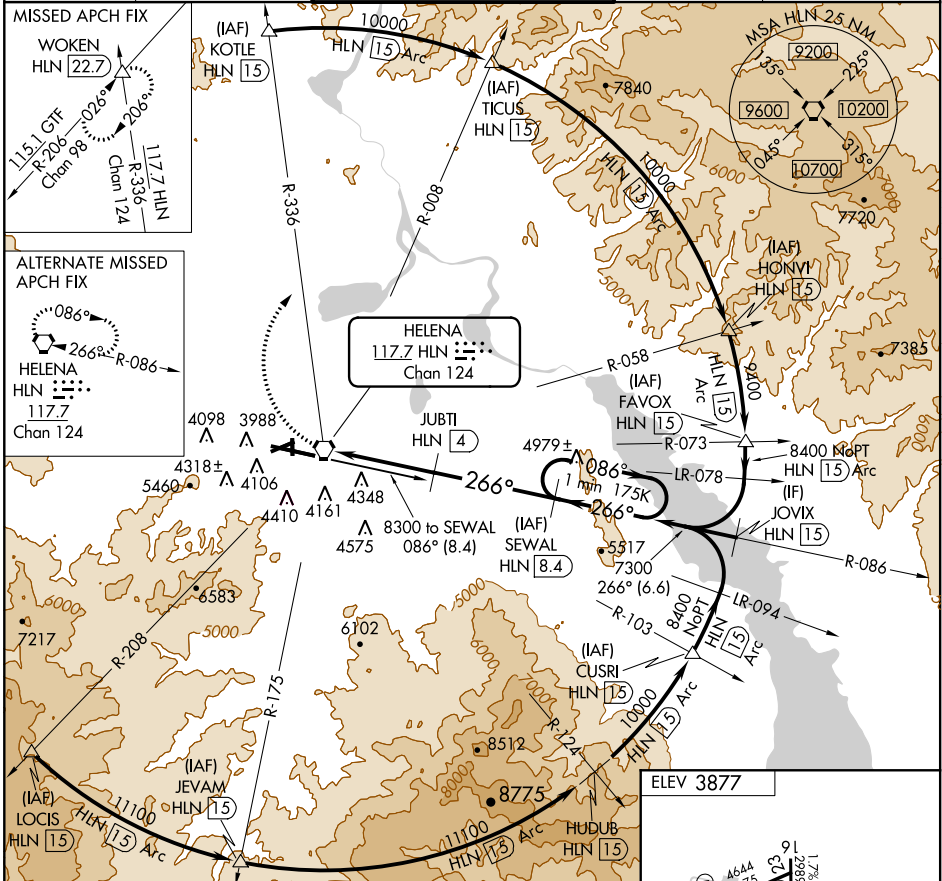
VOR/DME-B
HELENA RGNL (HLN)

VORTAC HLN 117.7 Chan 124	APP CRS 266°	Rwy Idg TDZE Apt Elev N/A N/A 3877
---	------------------------	--

⚠ Circling NA for Cat D south of Rwy 9-27.
 ⚠ DME Arc to final approach course required for turbojet aircraft.
 Holding at SEWAL authorized for Cat A and B aircraft only.

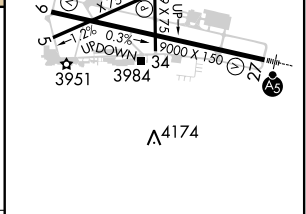
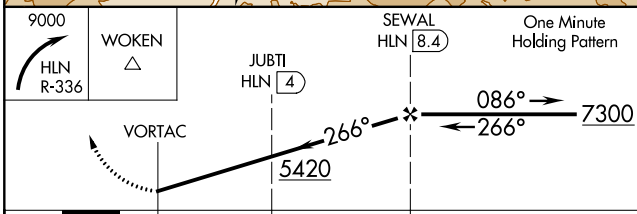
MISSED APPROACH: Climbing right turn to 9000
 via HLN VORTAC R-336 to WOKEN INT/22.7 DME
 and hold.

ATIS 120.4	HELENA APP CON * 119.5 229.4	HELENA TOWER * 118.3 (CTAF) 0 257.8	GND CON 121.9	UNICOM 122.95
----------------------	--	---	-------------------------	-------------------------



NW-1, 07 FEB 2013 to 07 MAR 2013

NW-1, 07 FEB 2013 to 07 MAR 2013



CATEGORY	A	B	C	D
CIRCLING	4760-1¼ 883 (900-1¼)		4760-2¾ 883 (900-2¾)	4760-3 883 (900-3)

REIL Rwy 9
 MIRL Rws 5-23 and 16-34
 HIRL Rwy 9-27