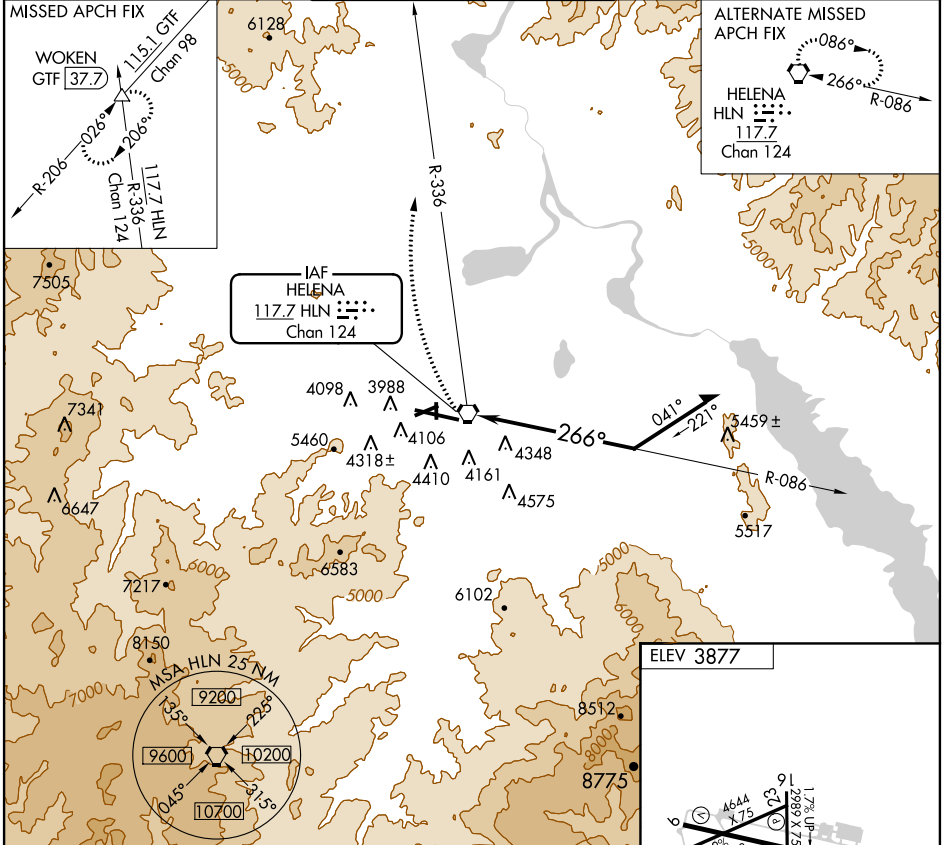


VORTAC HLN 117.7 Chan 124	APP CRS 266°	Rwy Idg TDZE Apt Elev 3877	N/A N/A 3877
---	------------------------	--	--------------------

▽ Circling NA for Cat D south of Rwy 9-27.
▲

MISSED APPROACH: Climbing right turn to 9000 via HLN VORTAC R-336 to WOKEN INT and hold.

ATIS 120.4	HELENA APP CON* 119.5 229.4	HELENA TOWER* 118.3 (CTAF) 257.8	GND CON 121.9	UNICOM 122.95
----------------------	---------------------------------------	--	-------------------------	-------------------------



NW-1, 07 FEB 2013 to 07 MAR 2013

NW-1, 07 FEB 2013 to 07 MAR 2013

9000 HLN R-336	WOKEN △	VORTAC	Remain within 10 NM
Procedure Turn: Descend to 10000 in HLN VORTAC holding pattern prior to departing outbound for procedure turn.		086°	8200
		266°	

CATEGORY	A	B	C	D
CIRCLING	6700-1¼ 2823 (2900-1¼)	6700-1½ 2823 (2900-1½)	6700-3	2823 (2900-3)

REIL Rwy 9 **①**
MIRL Rwys 5-23 and 16-34 **①**
HIRL Rwy 9-27 **①**