

STAKK THREE DEPARTURE

GND CON
121.9
HELENA TOWER*
118.3 (CTAF) 257.8
HELENA DEP CON*
119.5 229.4

SL-192 (FAA)

GREAT FALLS
115.1 GTF
Chan 98
N47° 27.00' - W111° 24.73'
L-13, H-1

LEWISTOWN
112.0 LWT
Chan 57
N47° 03.18' - W109° 36.37'
L-13, H-1

HELENA
117.7 HLN
Chan 124
N46° 36.41' - W111° 57.21'

TICUS
N46°50.15'
W111°48.50'

HONVI
N46°40.59'
W111°36.30'

FAVOX
N46°36.64'
W111°35.45'

WAUTS
N46°36.70'
W111°27.28'
L-13

TAKEOFF MINIMUMS:
Rwy 9: Standard with minimum climb of 415' per NM to 10200.
Rwy 27: Standard with minimum climb of 340' per NM to 10200.

TAKEOFF OBSTACLES:
Rwy 27: Bldg 1592' from DER, 731' left of centerline, 20' AGL/3917' MSL.
Terrain 100' from DER, 499' left of centerline, 3871' MSL.
Tree 1567' from DER, 616' left of centerline, 47' AGL/3906' MSL.
Terrain 203' from DER, 346' left of centerline, 3869' MSL.

NOTE: Chart not to scale.

BOZEMAN
112.4 BZN
Chan 71
N45° 47.03' - W111° 09.33'
L-13, H-1

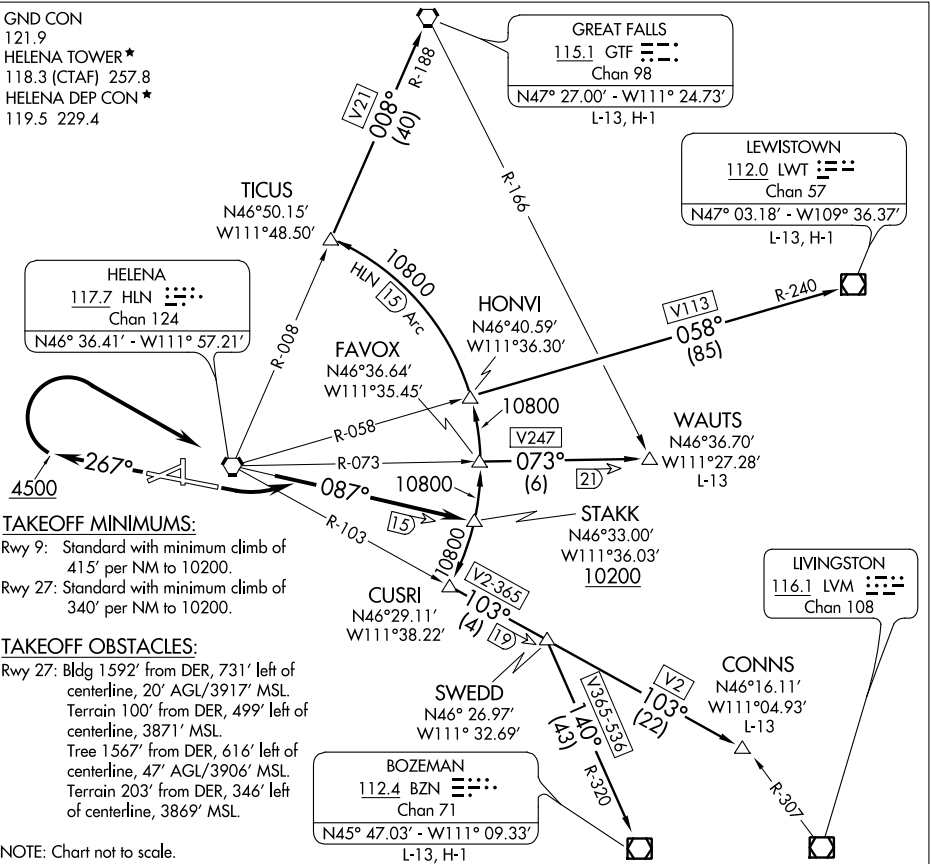
LIVINGSTON
116.1 LVM
Chan 108

CONN'S
N46°16.11'
W111°04.93'
L-13

SWEDD
N46° 26.97'
W111° 32.69'

CUSRI
N46°29.11'
W111°38.22'

STAKK
N46°33.00'
W111°36.03'
10200



NW-1, 07 FEB 2013 to 07 MAR 2013

NW-1, 07 FEB 2013 to 07 MAR 2013

DEPARTURE ROUTE DESCRIPTION

- TAKEOFF RUNWAY 9:** Climbing left turn to intercept HLN R-087 to cross STAKK at or above 10200. Thence via transition.
- TAKEOFF RUNWAY 27:** Climb heading 267° to 4500 then climbing right turn direct HLN VORTAC. Continue climb on HLN R-087 to cross STAKK at or above 10200. Thence via transition.
- BOZEMAN TRANSITION (STAKK3.BZN):** From over STAKK via 15 DME Arc to CUSRI INT, then via HLN R-103 to SWEDD INT, then via BZN R-320 to BZN VOR/DME.
- CONN'S TRANSITION (STAKK3.CONNS):** From over STAKK via 15 DME Arc to CUSRI INT, then via HLN R-103 to SWEDD INT, then via HLN R-103 to CONNS INT.
- GREAT FALLS TRANSITION (STAKK3.GTF):** From over STAKK via 15 DME Arc to FAVOX, then via 15 DME Arc to HONVI, then via 15 DME Arc to TICUS, then via HLN R-008 and GTF R-188 to GTF VORTAC.
- LEWISTOWN TRANSITION (STAKK3.LWT):** From over STAKK via 15 DME Arc to FAVOX, then via 15 DME Arc to HONVI, then via HLN R-058 and LWT R-240 to LWT VOR/DME.
- WAUTS TRANSITION (STAKK3.WAUTS):** From over STAKK via 15 DME Arc to FAVOX, then via HLN R-073 to WAUTS INT.