


APP CRS 267°	Rwy Idg 9000
	TDZE 3852
	Apt Elev 3877

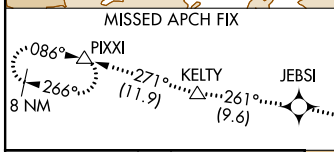
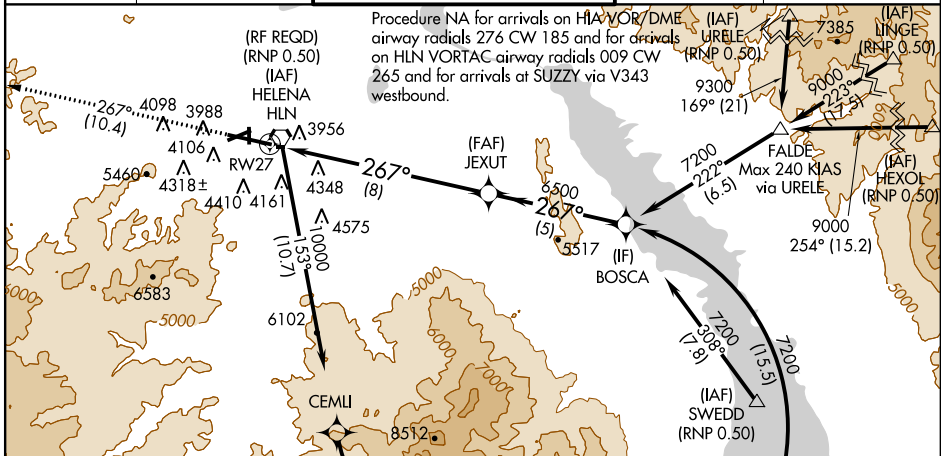
RNAV (RNP) Z RWY 27

HELENA RGNL (HLN)

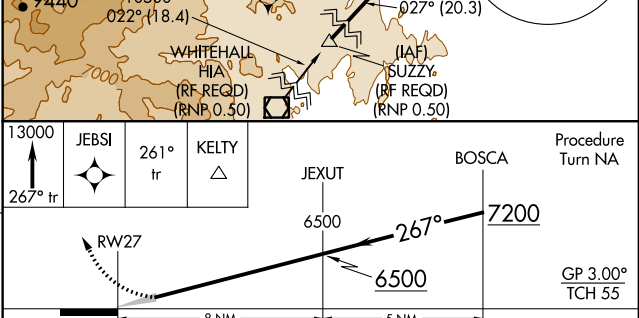
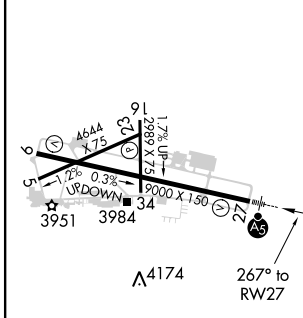
GPS required. For uncompensated Baro-VNAV systems, procedure NA below -22°C (-7°F) or above 41°C (105°F). *Missed approach requires minimum climb of 295 feet per NM to 7900. **Missed approach requires minimum climb of 290 feet per NM to 7300. ***Missed approach requires minimum climb of 405 feet per NM to 6300. For inoperative MALSR, increase RNP 0.18* visibility to 1, RNP 0.22** visibility to 1/4, and RNP 0.30*** visibility to 1/2. Inoperative table does not apply to RNP 0.30.

MALSR

MISSED APPROACH: Climb to 13000 via 267° track to JEBSI, and via 261° track to KELTY, and via 271° track to PIXXI and hold, continue climb-in-hold to 13000.

ATIS 120.4	HELENA APP CON * 119.5 229.4	HELENA TOWER * 118.3 (CTAF) 257.8	GND CON 121.9	UNICOM 122.95
----------------------	--	---	-------------------------	-------------------------



ELEV 3877	TDZE 3852
-----------	-----------



CATEGORY	8 NM		5 NM	
	A	B	C	D
RNP 0.18 DA*		4119-1/2	267 (300-1/2)	
RNP 0.22 DA**		4212-3/4	360 (400-3/4)	
RNP 0.30 DA***		4287-1	435 (500-1)	
RNP 0.30 DA		4863-4	1011 (1000-4)	

NW-1, 07 FEB 2013 to 07 MAR 2013

NW-1, 07 FEB 2013 to 07 MAR 2013

AUTHORIZATION REQUIRED