


# RNAV (RNP) Y RWY 27

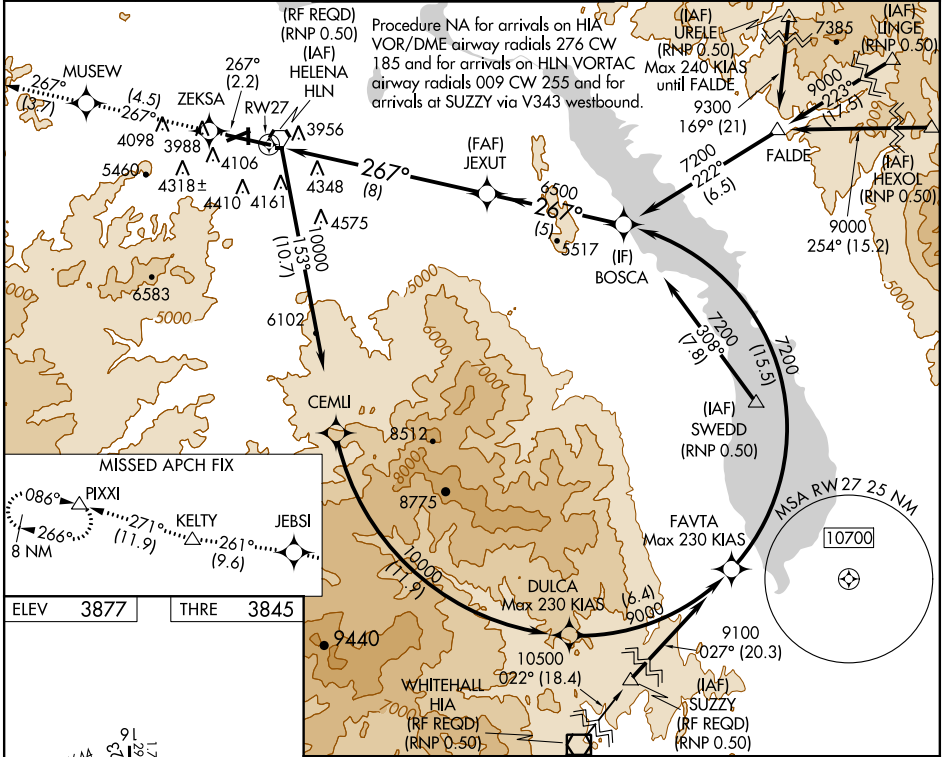
HELENA RGNL (HLN)

APP CRS <b>267°</b>	Rwy Idg <b>THRE</b>	<b>9000</b>
	Apt Elev	<b>3877</b>

**GPS required.** For uncompensated Baro-VNAV systems, procedure NA below -22°C (-7°F) or above 41°C (105°F). For inoperative MALS, increase RNP 0.22\* visibility to 1, and RNP 0.30\*\* visibility to 1½. Missed approach requires RNP less than 1.0. \*Missed approach requires minimum climb of 290 feet per NM to 7700; if unable, see RNAV (RNP) Z RWY 27. \*\*Missed approach requires minimum climb of 270 feet per NM to 7600; if unable, see RNAV (RNP) Z RWY 27.

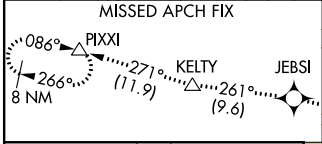
**MALS**  
  
**MISSED APPROACH:** Climb to 13000 on track 267° to ZEKSA, then on track 267° to MUSEW, then on track 267° to JEBSI, then on track 261° to KELTY, then on track 271° track to PIXXI and hold, continue climb-in-hold to 13000.

ATIS <b>120.4</b>	HELENA APP CON * <b>119.5 229.4</b>	HELENA TOWER * <b>118.3 (CTAF) 257.8</b>	GND CON <b>121.9</b>	UNICOM <b>122.95</b>
----------------------	--	---	-------------------------	-------------------------

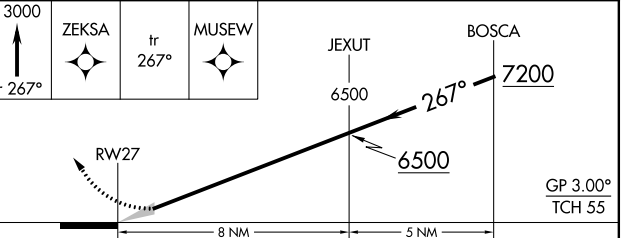


NW-1, 07 FEB 2013 to 07 MAR 2013

NW-1, 07 FEB 2013 to 07 MAR 2013



ELEV 3877	THRE 3845
-----------	-----------



CATEGORY	A	B	C	D
RNP 0.22 DA*		4133-1/2	288 (300-1/2)	
RNP 0.30 DA**		4287-1	442 (500-1)	

REIL Rwy 9  
 MIRL Rwy 5-23 and 16-34  
 HIRL Rwy 9-27

**AUTHORIZATION REQUIRED**