


LOC I-HLN	APP CRS	Rwy Idg	9000
110.1	267°	THRE	3845
		Apt Elev	3877

ILS or LOC Z RWY 27

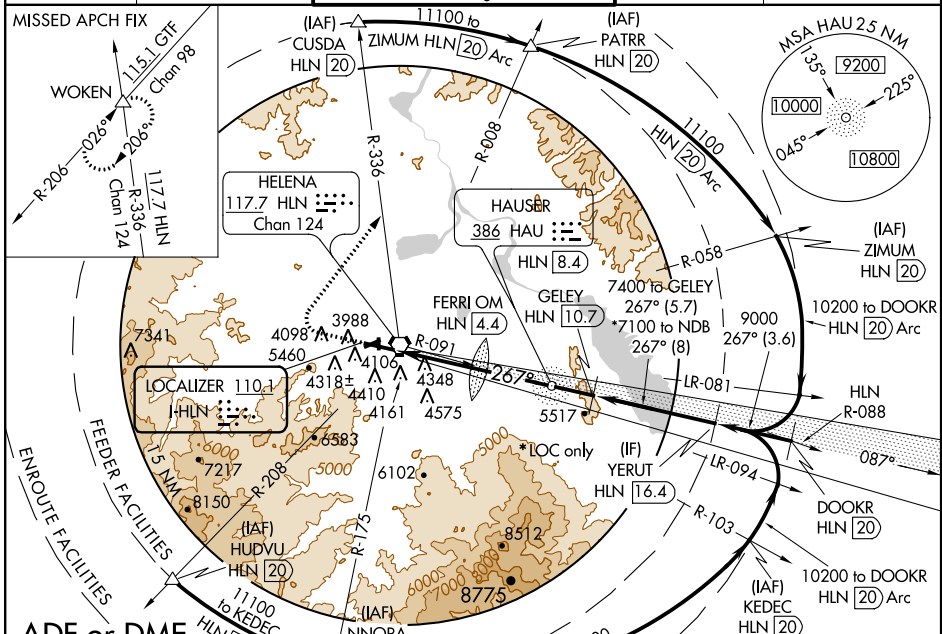
HELENA RGNL (HLN)

⚠ Inoperative table does not apply to S-LOC 27 all Cats. For inoperative MALSR, increase S-ILS 27 Cat E visibility to 3/4 mile, increase FERRI fix minimums: S-LOC 27 Cat C/D/E visibility to 1 7/8 miles. Missed approach requires a minimum climb of 320 ft per NM to 6000, if unable to meet climb gradient, see ILS or LOC Y RWY 27. Circling NA south of Rwy 9-27 for Cats D and E. Circling to Rwy 5 and 23 NA at night. When VGS1 inop, Circling to Rwy 34 NA at night. DME from HLN VORTAC, simultaneous reception of I-HLN and HLN DME required.

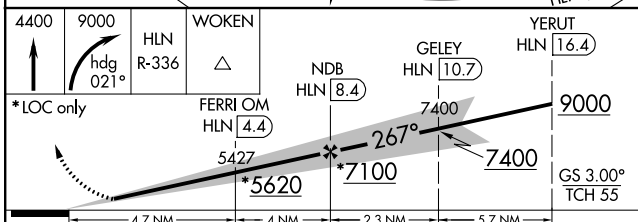
MALSR 

MISSED APPROACH: Climb to 4400 then climbing right turn to 9000 via heading 021° and HLN VORTAC R-336 to WOKEN INT and hold.

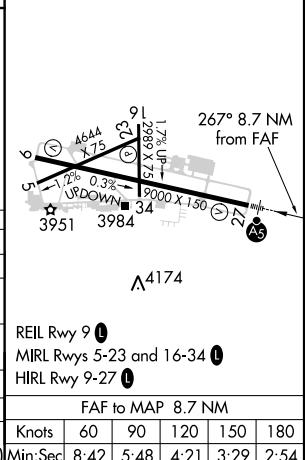
ATIS	HELENA APP CON *	HELENA TOWER *	GND CON	UNICOM
120.4	119.5 229.4	118.3 (CTAF) 257.8	121.9	122.95



ELEV	3877	THRE	3845
------	------	------	------



CATEGORY	A	B	C	D	E
S-ILS 27	4045-1/2		200 (200-1/2)		
S-LOC 27	5620-1/4 1775 (1800-1/4)	5620-1/2 1775 (1800-1/2)	5620-3	1775 (1800-3)	
CIRCLING	5620-1/4 1743 (1800-1/4)	5620-1/2 1743 (1800-1/2)	5620-3	1743 (1800-3)	
FERRI FIX MINIMUMS*					
S-LOC 27	4520-1/2 675 (700-1/2)		4520-1/2	675 (700-1/2)	
CIRCLING	4640-1	763 (800-1)	4740-2 1/2 863 (900-2 1/2)	4740-2 3/4 863 (900-2 3/4)	4940-3 1063 (1100-3)



NW-1, 07 FEB 2013 to 07 MAR 2013

NW-1, 07 FEB 2013 to 07 MAR 2013

FAC to MAP	8.7 NM				
Knots	60	90	120	150	180
Min:Sec	8:42	5:48	4:21	3:29	2:54