

LOC I-HLN 110.1	APP CRS 267°	Rwy Idg THRE	9000
			3845
		Apt Elev	3877

ILS or LOC Y RWY 27

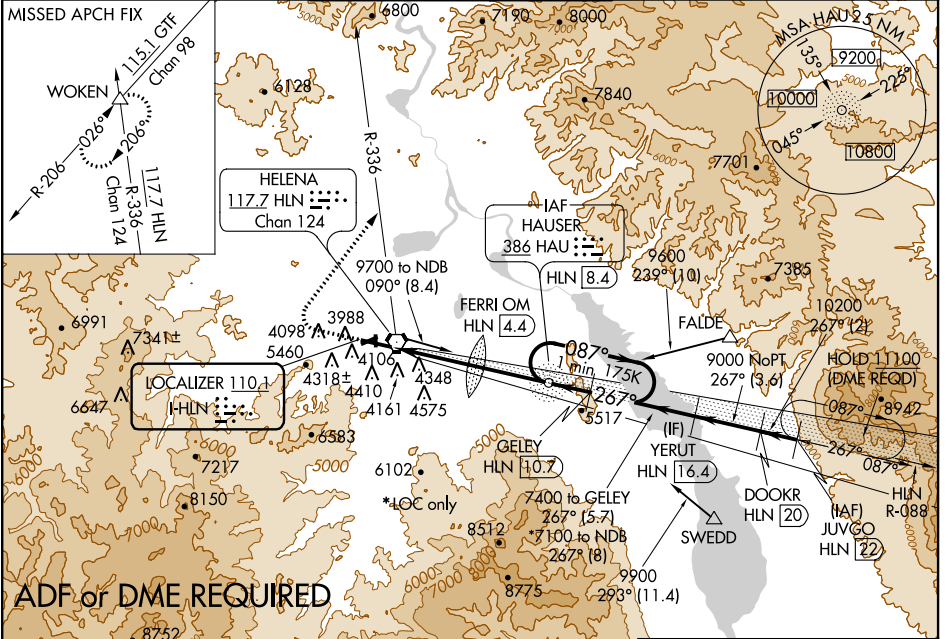
HELENA RGNL (HLN)

▼ Inoperative table does not apply to S-LOC 27 all Cats. For inoperative MALSR, increase S-ILS 27 all Cats visibility to 1/8 miles, FERRI FIX minimums: S-LOC 27 Cat C, D and E visibility to 2 miles. Holding at HAU NDB authorized for Category A and B aircraft only. Circling NA south of Rwy 9-27 for Cats D and E. Circling to Rwy 5 and 23 NA at night. When VGSI inop, Circling to Rwy 34 NA at night. DME from HLN VORTAC, simultaneous reception of I-HLN and HLN DME required.

MALSR
AS

MISSED APPROACH: Climb to 4700 then climbing right turn to 9000 via heading 021° and HLN VORTAC R-336 to WOKEN INT and hold, continue climb-in-hold to 9000.

ATIS 120.4	HELENA APP CON * 119.5 229.4	HELENA TOWER * 118.3 (CTAF) 257.8	GND CON 121.9	UNICOM 122.95
----------------------	--	---	-------------------------	-------------------------



CATEGORY	A	B	C	D	E
S-ILS 27	4402-1 3/8		557 (600-1 1/8)		
S-LOC 27	5620-1 1/4 1775 (1800-1 1/4)	5620-1 1/2 1775 (1800-1 1/2)	5620-3	1775 (1800-3)	
CIRCLING	5620-1 1/4 1743 (1800-1 1/4)	5620-1 1/2 1743 (1800-1 1/2)	5620-3	1743 (1800-3)	
FERRI FIX MINIMUMS*					
S-LOC 27	4580-1/2	735 (800-1/2)	4580-1 1/8	735 (800-1 1/8)	
CIRCLING	4640-1	763 (800-1)	4740-2 1/2 863 (900-2 1/2)	4740-2 3/4 863 (900-2 3/4)	4940-3 1063 (1100-3)

NW-1, 07 FEB 2013 to 07 MAR 2013

NW-1, 07 FEB 2013 to 07 MAR 2013