

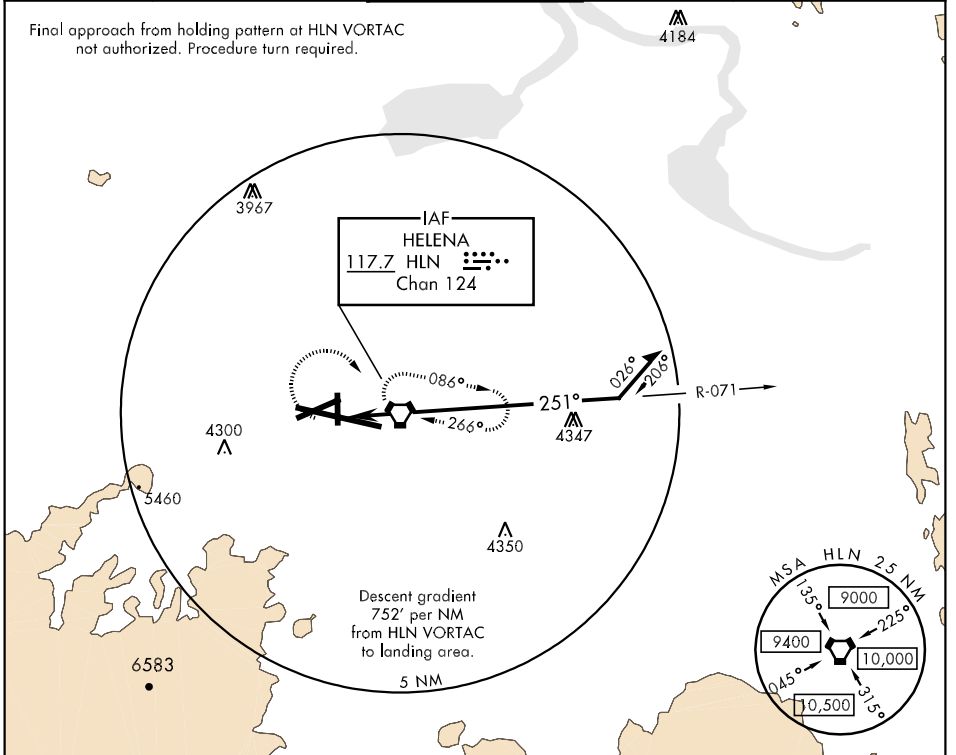
# COPTER VOR 251°

VORTAC HLN <b>117.7</b> Chan <b>124</b>	APCH CRS <b>251°</b>	Rwy Idg TDZE N/A N/A Arpt Elev <b>3877</b>	AL-192 [USA]	HELENA RGNL (KHLN)
---	-------------------------	---	--------------	--------------------

▽ MISSED APPROACH: Climbing right turn to 8000 direct HLN VORTAC and hold.  
▲ NA when tower clsd.

ATIS <b>120.4</b>	HELENA APP CON <b>119.5 229.4</b>	HELENA TOWER ★ <b>118.3 (CTAF) 0 257.8</b>	GND CON <b>121.9</b>	UNICOM <b>122.95</b>
----------------------	--------------------------------------	---	-------------------------	-------------------------

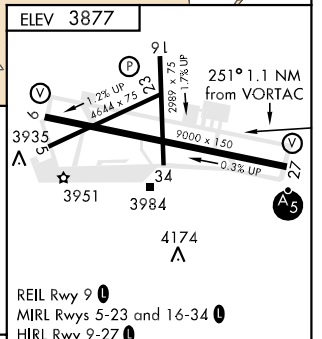
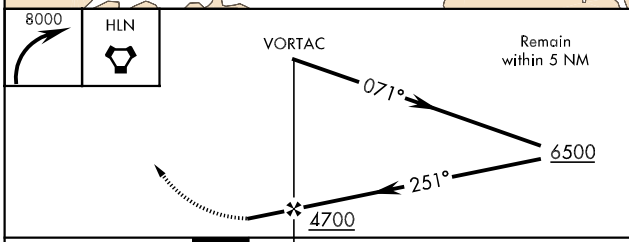
Final approach from holding pattern at HLN VORTAC not authorized. Procedure turn required.



NW-1, 07 FEB 2013 to 07 MAR 2013

NW-1, 07 FEB 2013 to 07 MAR 2013

## COPTER ONLY



CATEGORY	COPTER					FAF to MAP 1.1 NM									
H-251°	4260-½	412	(400-½)	Knots	45	60	75	90	105	Min:Sec	1:28	1:06	0:53	0:44	0:37

# COPTER VOR 251°