

COASTAL FOUR DEPARTURE

ATIS 126.45
GND CON
121.6
BRAINARD TOWER★
119.6 (CTAF) 248.2
BRADLEY DEP CON
127.8 269.325

TAKEOFF MINIMUMS:

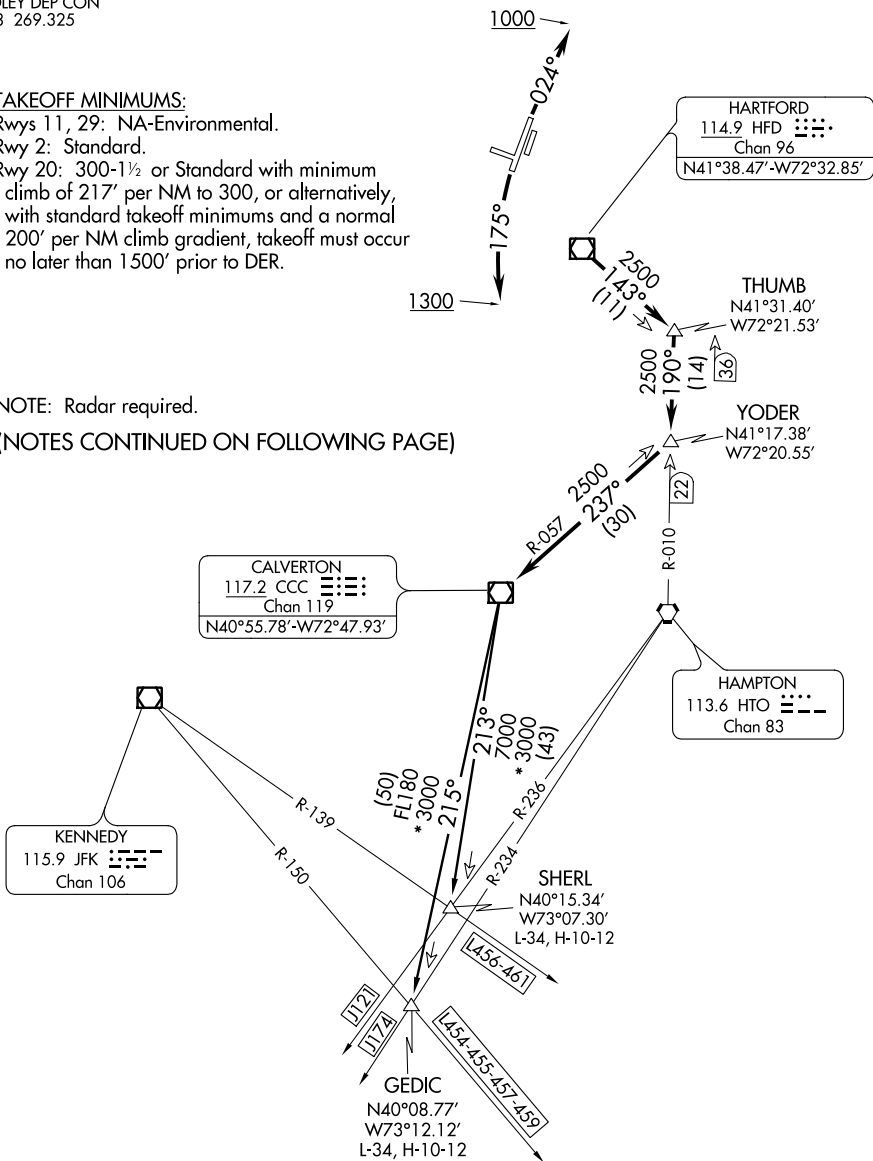
Rwys 11, 29: NA-Environmental.

Rwy 2: Standard.

Rwy 20: 300-1½ or Standard with minimum climb of 217' per NM to 300, or alternatively, with standard takeoff minimums and a normal 200' per NM climb gradient, takeoff must occur no later than 1500' prior to DER.

NOTE: Radar required.

(NOTES CONTINUED ON FOLLOWING PAGE)



NE-1, 07 FEB 2013 to 07 MAR 2013

NE-1, 07 FEB 2013 to 07 MAR 2013

(NARRATIVE ON FOLLOWING PAGE)

NOTE: Chart not to scale.

COASTAL FOUR DEPARTURE