

RNAV (GPS) RWY 31

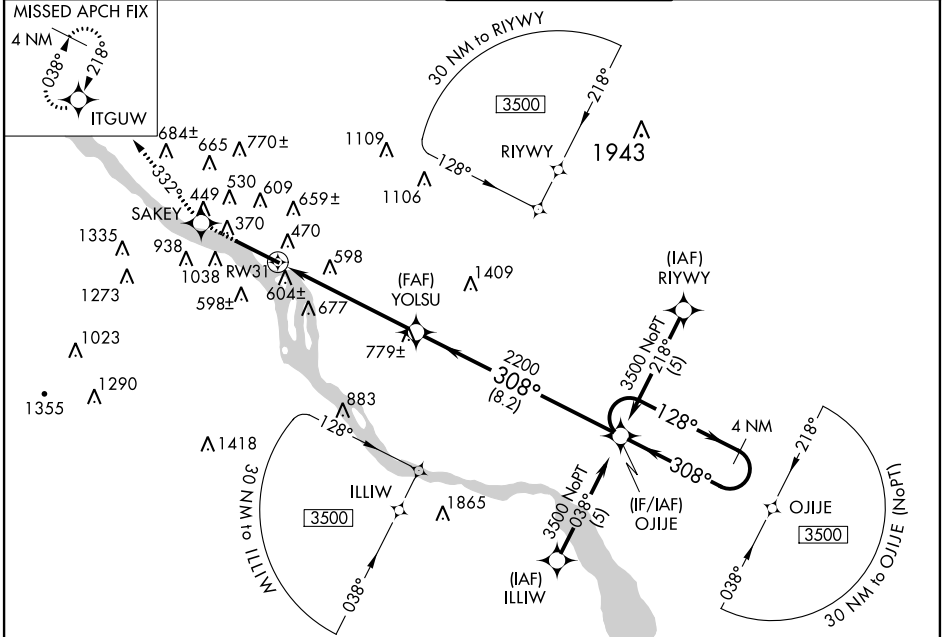
HARRISBURG INTL (MDT)

WAAS CH 78013 W31A	APP CRS 308°	Rwy Idg 8132 TDZE 308 Apt Elev 310
--	------------------------	---

⚠ Circling NA south of Rwy 13-31. For uncompensated Baro-VNAV systems, LNAV/VNAV NA below -15°C (5°F) or above 48°C (118°F).
⚠ DME/DME RNP-0.3 NA.

MISSED APPROACH: Climb to 3500 direct SAKEY and via track 332° to ITGUW and hold.

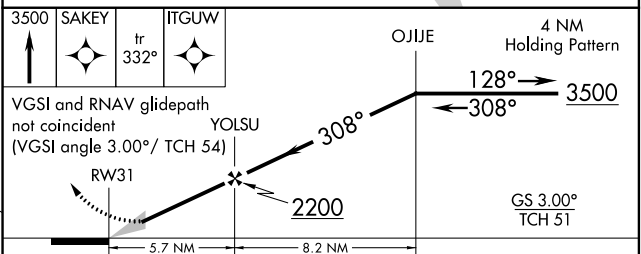
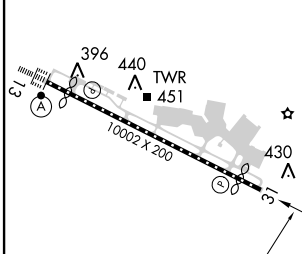
ATIS 118.8	HARRISBURG APP CON 124.1 273.525	HARRISBURG INTL TOWER 124.8 269.35	GND CON 121.7 348.6
----------------------	--	--	-------------------------------



NE-4, 07 FEB 2013 to 07 MAR 2013

NE-4, 07 FEB 2013 to 07 MAR 2013

ELEV 310	D	TDZE 308
----------	----------	----------



CATEGORY	A	B	C	D
LPV DA		558/50	250 (300-1)	
LNAV/VNAV DA		921-2¼	613 (700-2¼)	
LNAV MDA	1100/50 792 (800-1)	1100/60 792 (800-1¼)	1100-2¼ 792 (800-2¼)	1100-2½ 792 (800-2½)
CIRCLING	1100-1 790 (800-1)	1100-1¼ 790 (800-1¼)	1100-2¼ 790 (800-2¼)	1100-2½ 790 (800-2½)

TDZ/CL Rwy 13
REIL Rwy 31
HIRL Rwy 13-31