

HARRISBURG, PENNSYLVANIA

AL-188 (FAA)

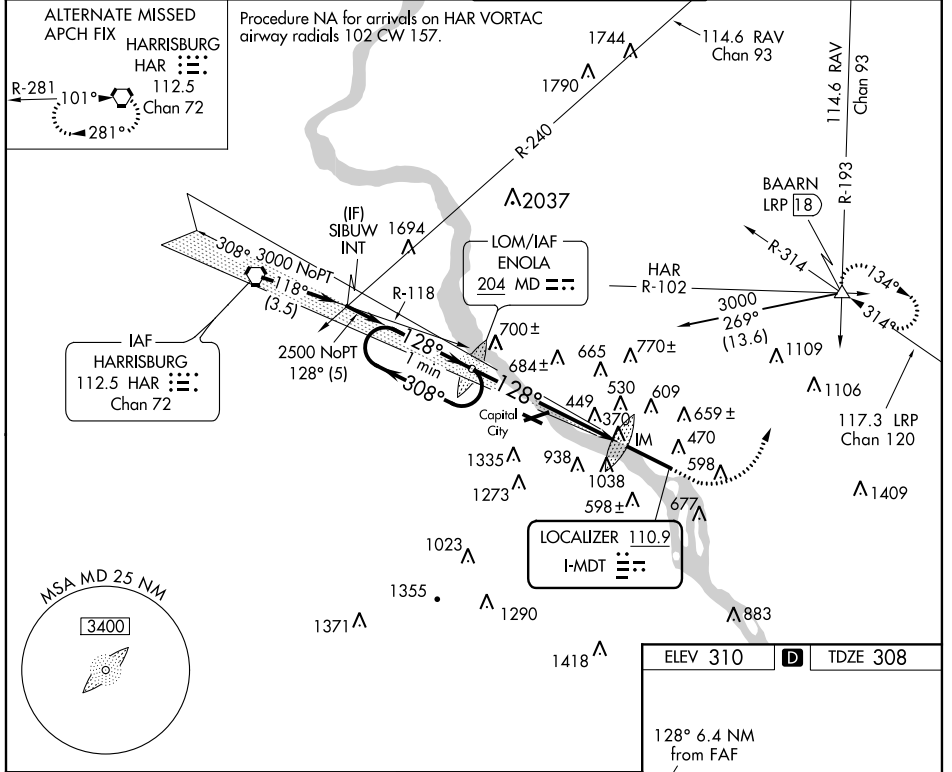
LOC I-MDT 110.9	APP CRS 128°	Rwy Idg 8070 TDZE 308 Apt Elev 310
---------------------------	------------------------	--

ILS or LOC RWY 13

HARRISBURG INTL (MDT)

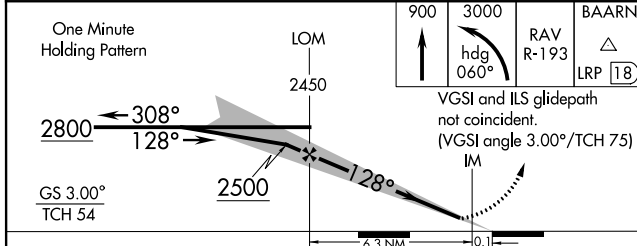
	Circling NA south of Rwy 13-31.		MISSED APPROACH: Climb to 900, then climbing left turn to 3000 via heading 060° and RAV VORTAC R-193 to BAARN Int/LRP 18 DME and hold.
--	---------------------------------	--	--

ATIS 118.8	HARRISBURG APP CON 124.1 273.525	HARRISBURG INTL TOWER 124.8 269.35	GND CON 121.7 348.6
----------------------	--	--	-------------------------------

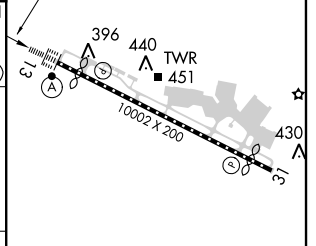


NE-4, 07 FEB 2013 to 07 MAR 2013

NE-4, 07 FEB 2013 to 07 MAR 2013



ELEV 310	D	TDZE 308
----------	----------	----------



CATEGORY	A	B	C	D
S-ILS 13		508/18	200 (200-½)	
S-LOC 13	900/24	592 (600-½)	900/50 592 (600-1)	900/60 592 (600-1½)
CIRCLING	900-1	590 (600-1)	920-1 ¾ 610 (700-1¾)	980-2 670 (700-2)

TDZ/CL Rwy 13				
REIL Rwy 31				
HIRL Rwy 13-31				
FAF to MAP 6.4 NM				
Knots	60	90	120	150 180
Min:Sec	6:24	4:16	3:12	2:34 2:08

HARRISBURG, PENNSYLVANIA
Amdt 2 12320

40°12'N - 76°46'W

HARRISBURG INTL (MDT)

ILS or LOC RWY 13