

HARRISBURG, PENNSYLVANIA

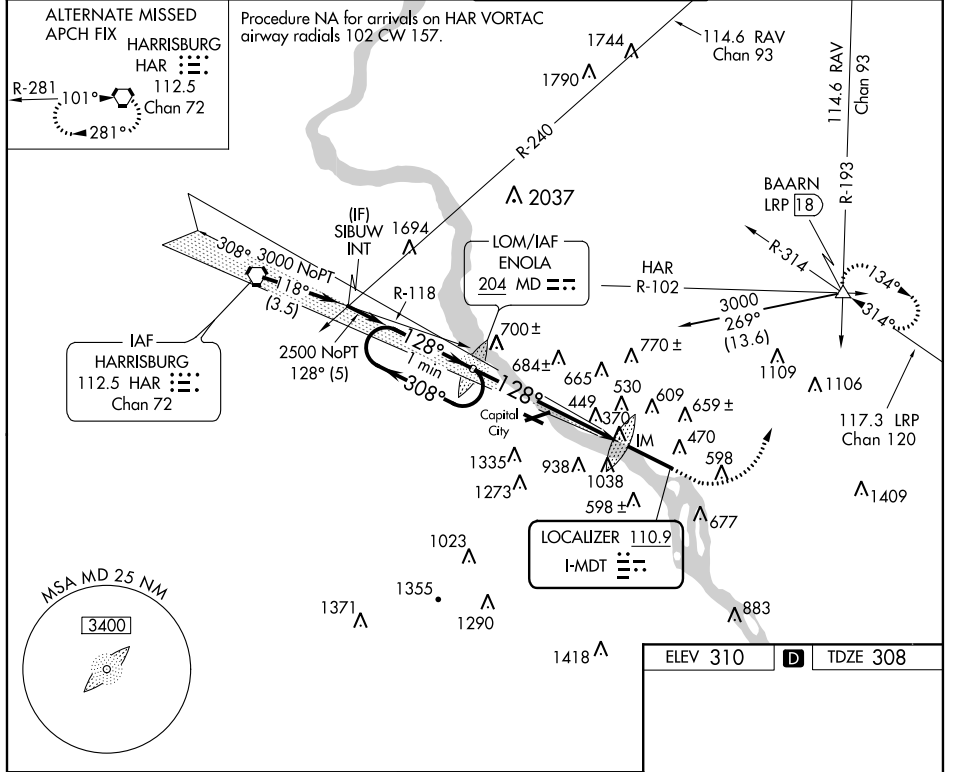
AL-188 (FAA)

ILS RWY 13 (CAT II) HARRISBURG INTL (MDT)

LOC I-MDT 110.9	APP CRS 128°	Rwy Idg 8070
		TDZE 308
		Apt Elev 310

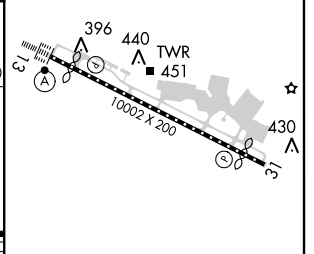
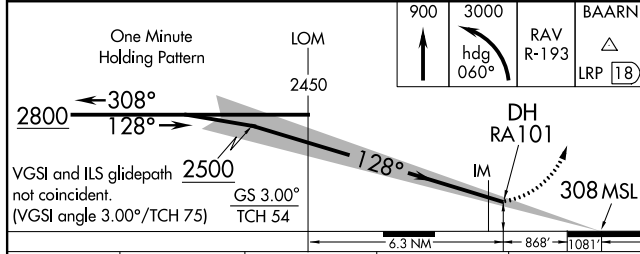
	MISSED APPROACH: Climb to 900, then climbing left turn to 3000 via heading 060° and RAV VORTAC R-193 to BAARN Int/LRP 18 DME and hold.

ATIS 118.8	HARRISBURG APP CON 124.1 273.525	HARRISBURG INTL TOWER 124.8 269.35	GND CON 121.7 348.6
----------------------	--	--	-------------------------------



NE-4, 07 FEB 2013 to 07 MAR 2013

NE-4, 07 FEB 2013 to 07 MAR 2013



CATEGORY	A	B	C	D
S-ILS 13		RA 101/12	100 DA 408	

CATEGORY II ILS - SPECIAL AIRCREW & AIRCRAFT CERTIFICATION REQUIRED

TDZ/CL Rwy 13
REIL Rwy 31
HIRL Rwy 13-31

HARRISBURG, PENNSYLVANIA
Amdt 2 12320

40°12'N - 76°46'W

HARRISBURG INTL (MDT)
ILS RWY 13 (CAT II)