

# ILS or LOC RWY 8

HARRISBURG / CAPITAL CITY (CXY)

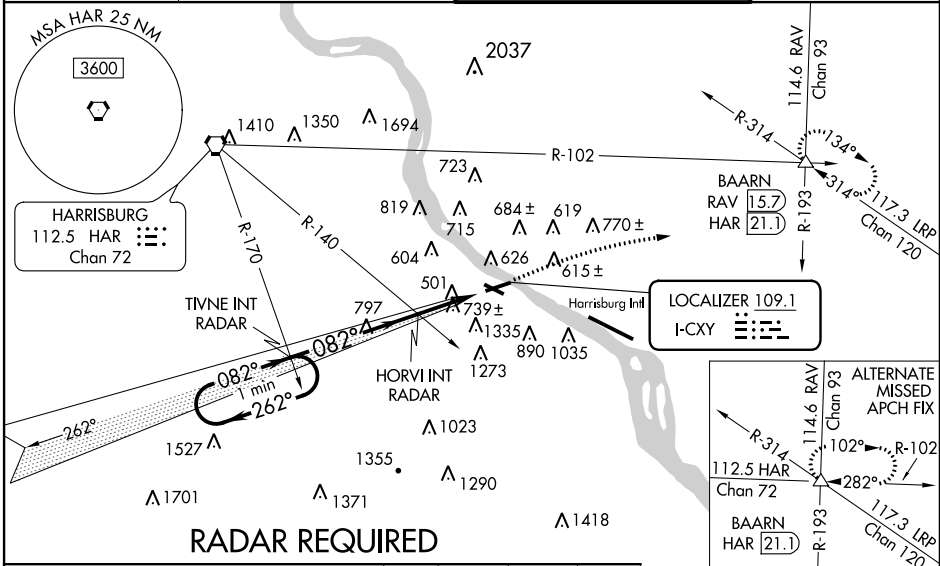
|              |             |          |             |
|--------------|-------------|----------|-------------|
| LOC I-CXY    | APP CRS     | Rwy Idg  | <b>5001</b> |
| <b>109.1</b> | <b>082°</b> | TDZE     | <b>342</b>  |
|              |             | Apt Elev | <b>347</b>  |

**▼** Circling to Rwy 12-30 NA at night.  
 Inoperative table does not apply to S-ILS-8.  
**▲** For inoperative MALSR, increase S-LOC-8 Cat A visibility to 1 mile.  
 HORVI Fix minimums: For inoperative MALSR, increase S-LOC-8  
 Cats A and B visibility to 1 mile. Visibility reduction by helicopters NA.  
 Autopilot coupled approach NA below 940. When local altimeter  
 setting not received, use Harrisburg Intl altimeter setting.

**MALSR**

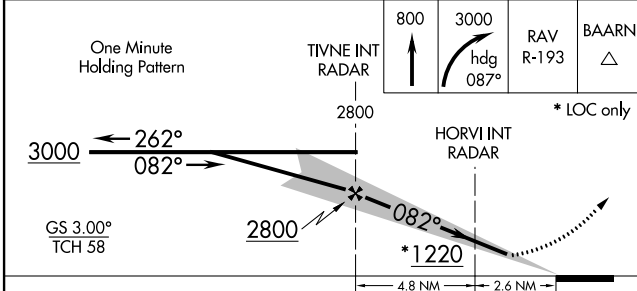
**MISSED APPROACH:** Climb to 800 then climbing right turn to 3000 via heading 087° and RAV VORTAC R-193 to BAARN INT/RAV 15.7 DME and hold.

|               |                      |                             |              |
|---------------|----------------------|-----------------------------|--------------|
| ATIS          | HARRISBURG APP CON   | CAPITAL CITY TOWER *        | GND CON      |
| <b>134.95</b> | <b>124.1 273.525</b> | <b>119.5 (CTAF) 0 257.8</b> | <b>121.9</b> |

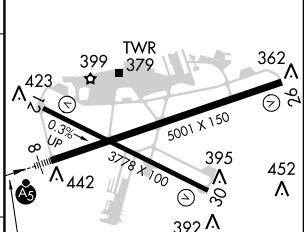


NE-4, 07 FEB 2013 to 07 MAR 2013

NE-4, 07 FEB 2013 to 07 MAR 2013



|          |          |
|----------|----------|
| ELEV 347 | TDZE 342 |
|----------|----------|



| CATEGORY                  | A                              | B                               | C                             | D                             |
|---------------------------|--------------------------------|---------------------------------|-------------------------------|-------------------------------|
| S-ILS 8                   |                                | 592-3/4                         | 250 (300-3/4)                 |                               |
| S-LOC 8                   | 1220-3/4                       | 878 (900-3/4)                   | 1220-2<br>878 (900-2)         | 1220-2 1/4<br>878 (900-2 1/4) |
| CIRCLING                  | 1260-1 1/4<br>913 (1000-1 1/4) | 1700-1 1/2<br>1353 (1400-1 1/2) | 1700-3                        | 1353 (1400-3)                 |
| <b>HORVI FIX MINIMUMS</b> |                                |                                 |                               |                               |
| S-LOC 8                   | 1000-3/4                       | 658 (700-3/4)                   | 1000-1 1/4<br>658 (700-1 1/4) | 1000-1 1/2<br>658 (700-1 1/2) |
| CIRCLING                  | 1260-1 1/4<br>913 (1000-1 1/4) | 1700-1 1/2<br>1353 (1400-1 1/2) | 1700-3                        | 1353 (1400-3)                 |

082° 7.4 NM from FAF

REIL Rws 12 and 30  
 HIRL Rws 8-26  
 MIRL Rwy 12-30

FAF to MAP 7.4 NM

|         |      |      |      |      |      |
|---------|------|------|------|------|------|
| Knots   | 60   | 90   | 120  | 150  | 180  |
| Min:Sec | 7:24 | 4:56 | 3:42 | 2:58 | 2:28 |