

WAAS CH <b>69629</b> <b>W32A</b>	APP CRS <b>317°</b>	Rwy Idg THRE <b>2601</b> Apt Elev <b>2613</b>
--	------------------------	---

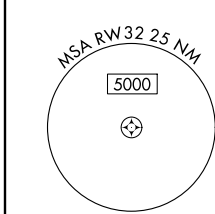
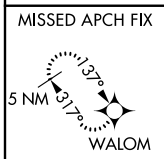
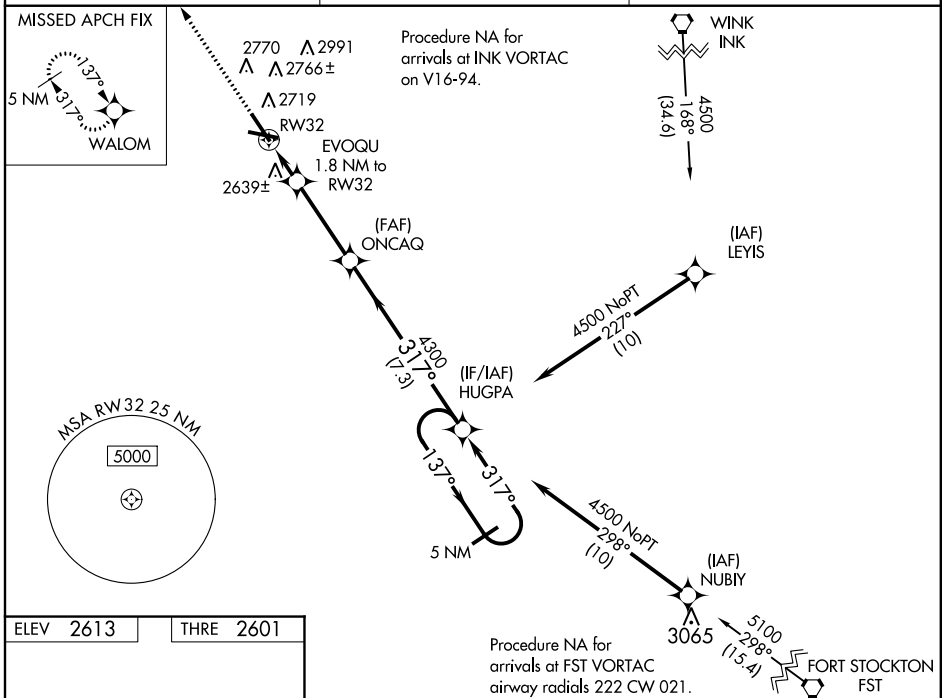
# RNAV (GPS) RWY 32

PECOS MUNI (P.E.Q)

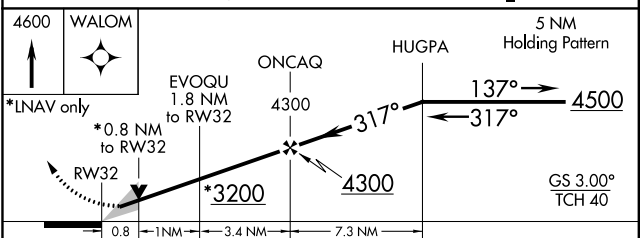
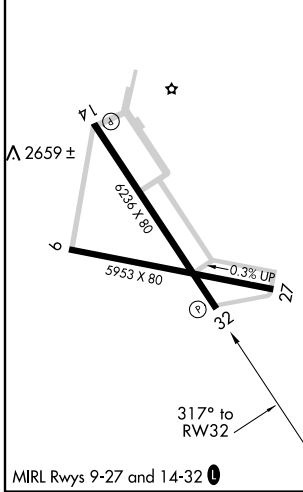
**⚠** For uncompensated Baro-VNAV systems, procedure NA below -20°C (-4°F) or above 27°C (80°F).  
**⚠** DME/DME RNP-0.3 NA. VDP and Baro-VNAV when using Wink altimeter setting. When local altimeter setting not received, use Wink altimeter setting and increase all DA 95 feet and all MDA 100 feet, increase LPV all Cats visibility ¼ mile, LNAV/VNAV all Cats visibility ¼ mile, LNAV Cat C/D ¼ mile and Circling Cat C visibility ¼ mile. Circling Rwy 9/27 NA at night.

**MISSED APPROACH:**  
Climb to 4600 direct WALOM and hold.

AWOS-3 <b>118.175</b>	ALBUQUERQUE CENTER <b>135.875 292.15</b>	UNICOM <b>122.8 (CTAF)</b>
--------------------------	---	-------------------------------



ELEV 2613	THRE 2601
-----------	-----------



CATEGORY	A	B	C	D
LPV DA		2801-¾	200 (200-¾)	
LNAV/VNAV DA		2851-⅞	250 (300-⅞)	
LNAV MDA	2900-1	299 (300-1)	2900-⅞	299 (300-⅞)
CIRCLING	3020-1 407 (500-1)	3080-1 467 (500-1)	3120-1½ 507 (600-1½)	3180-2 567 (600-2)

SC-3, 07 FEB 2013 to 07 MAR 2013

SC-3, 07 FEB 2013 to 07 MAR 2013