

WAAS CH 62830 W14A	APP CRS 137°	Rwy Idg THRE Apt Elev	6236 2608 2613
--	------------------------	-----------------------------	---

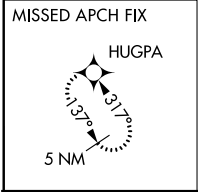
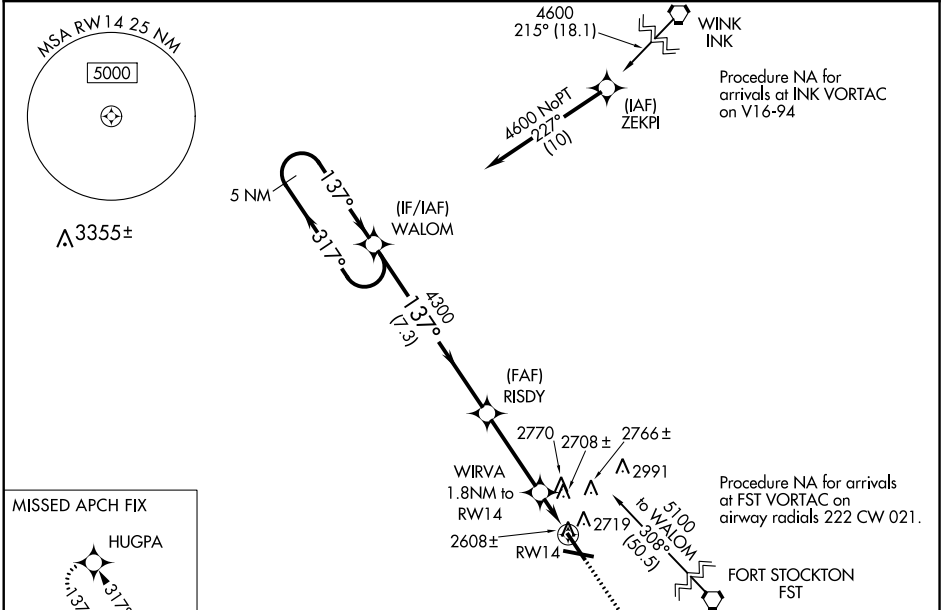
RNAV (GPS) RWY 14

PECOS MUNI (PEQ)

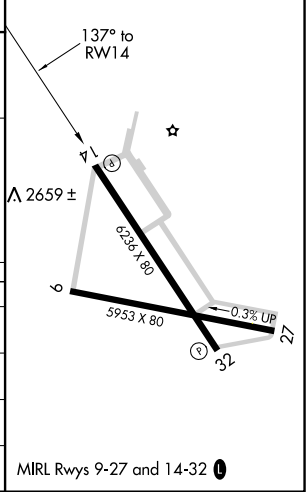
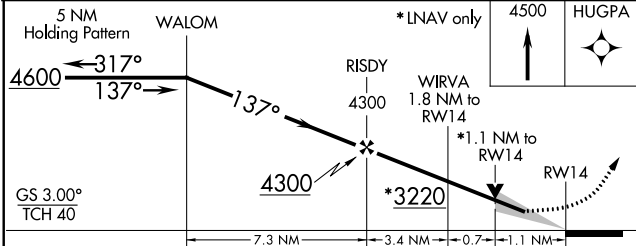
⚠ For uncompensated Baro-VNAV systems, LNAV/VNAV NA below -20°C (-4°F) or above 27°C (80°F).
⚠ DME/DME RNP-0.3 NA. VDP and Baro-VNAV NA with Wink altimeter setting. When local altimeter setting not received, use WINK altimeter setting and increase all DA 95 feet and all MDA 100 feet, increase LPV all Cats visibility ¼ mile, LNAV VNAV all Cats visibility ⅓ mile, LNAV Cat C/D and Circling Cat C visibility ¼ mile. Circling to Rwy 9/27 NA at night.

MISSED APPROACH:
 Climb to 4500 direct HUGPA and hold.

AWOS-3 118.175	ALBUQUERQUE CENTER 135.875 292.15	UNICOM 122.8 (CTAF) 0
--------------------------	---	---------------------------------



ELEV 2613	THRE 2608
-----------	-----------



CATEGORY	A	B	C	D
LPV DA		2808-¾	200 (200-¾)	
LNAV/VNAV DA		2900-1	292 (300-1)	
LNAV MDA	3000-1	392 (400-1)	3000-1½	392 (400-1½)
CIRCLING	3080-1	467 (500-1)	3120-1½	3180-2
			507 (600-1½)	567 (600-2)

MIRL Rwy 9-27 and 14-32 0

SC-3, 07 FEB 2013 to 07 MAR 2013

SC-3, 07 FEB 2013 to 07 MAR 2013