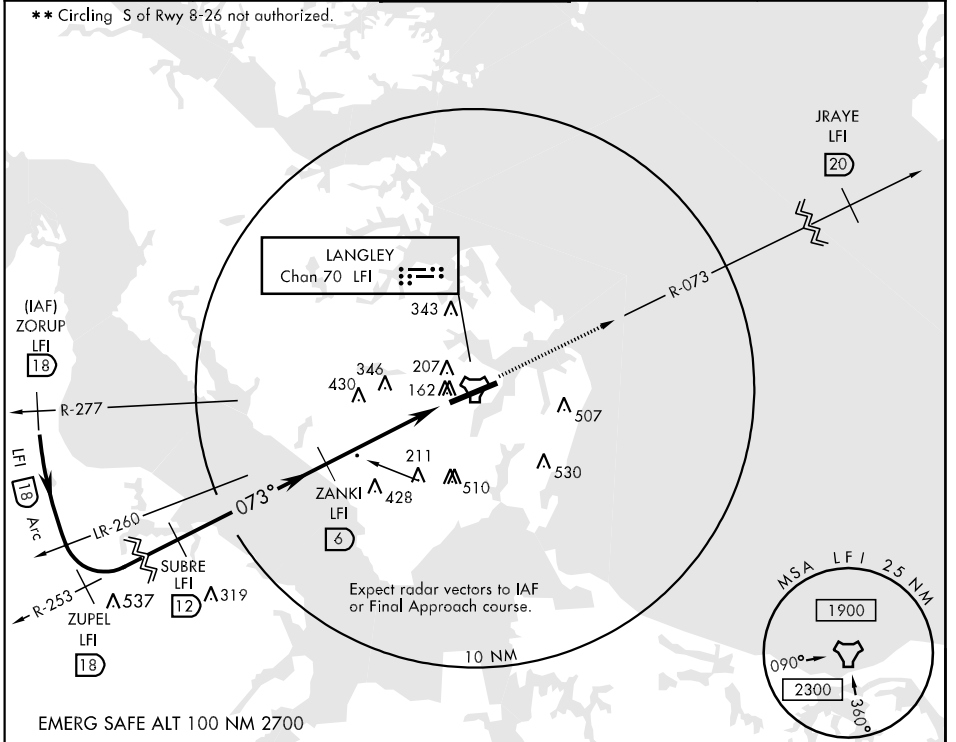


TACAN LFI Chan <b>70</b>	APCH CRS <b>073°</b>	Rwy Ldg THRE Arpt Elev <b>10,000</b> <b>9</b> <b>11</b>	AL-185 [USAF]	LANGLEY AFB (KLF1)
<p>▼ *When ALS inop, increase CAT AB RVR to 55 and vis to 1 mile, CAT CDE vis to 1 3/8 miles.</p>			ALSF-1 	MISSED APPROACH: Climb to 3000 via LFI R-073 to 20 DME (JRAYE).

ATIS ★ <b>270.1</b>	NORFOLK APP CON <b>125.7 335.625</b>	LANGLEY TOWER <b>125.0 253.5</b>	GND CON <b>121.7 275.8</b>	CLNC DEL <b>118.85 257.625</b>
------------------------	---	-------------------------------------	-------------------------------	-----------------------------------

\*\* Circling S of Rwy 8-26 not authorized.



NE-3, 07 FEB 2013 to 07 MAR 2013

NE-3, 07 FEB 2013 to 07 MAR 2013

ZORUP R-277 (18)	ZUPEL R-253 (18)	SUBRE (12)	ZANKI (6)	FUNDY (2.3)	TACAN	JRAYE LFI (20)	ELEV 11	THRE 9
3000		3000	2000	1600	2.86° TCH 54	3000	122	9
Arc		073°	1600	2.3	1.4	10,000 x 150	122	9
			4.6 NM	0.5		073° 5.1 NM from FAF	122	9
CATEGORY	A	B	C	D	E			
TAC 8 *	480/24	471 (500-1/2)	480/50	471 (500-1)		☆ 210 REIL Rwy 26 HIRL Rwy 8-26		
CIRCLING **	540-1	529 (600-1)	580-1 1/2 569 (600-1 1/2)	580-2 569 (600-2)	760-2 3/4 749 (800-2 3/4)			