

HAMPTON, VIRGINIA

RNAV (GPS) RWY 26

APCH CRS	Rwy ldg	10,000
258°	THRE	8
	Arpt Elev	11

AL-185 [USAF]

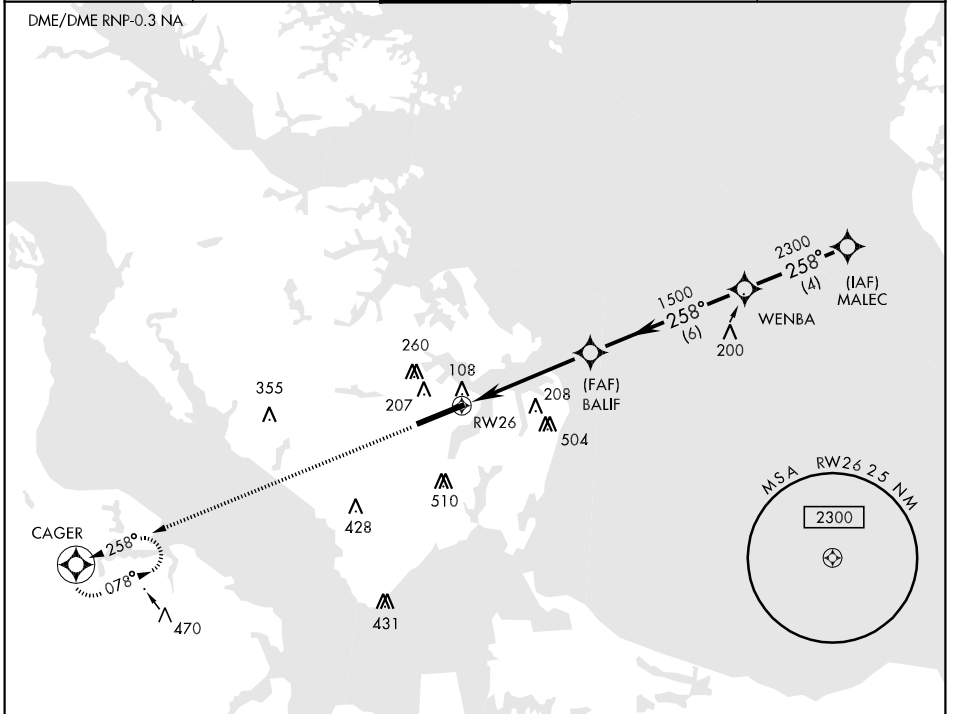
LANGLEY AFB (KLFJ)

▼ * When ALS inop, increase CAT AB RVR to 55 and vis to 1 mile, CAT CDE vis to 1 3/8 miles.
 ** Circling S of Rwy 8-26 not authorized for CAT E acct.

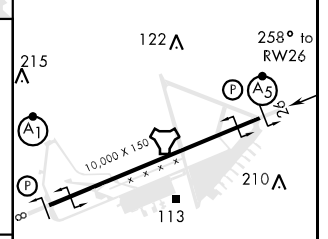
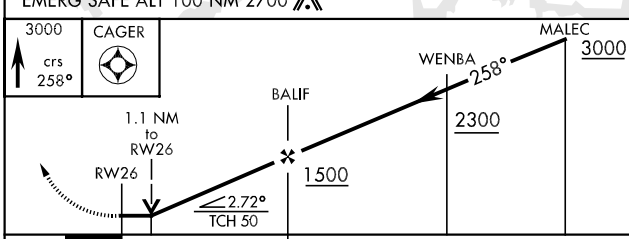


MISSED APPROACH: Climb to 3000 on course 258° to CAGER WPT and hold.

ATIS ★ 270.1	NORFOLK APP CON 125.7 335.625	LANGLEY TOWER 125.0 253.5	GND CON 121.7 275.8	CLNC DEL 118.85 257.625
-----------------	----------------------------------	------------------------------	------------------------	----------------------------



ELEV 11	THRE 9
---------	--------



CATEGORY	A	B	C	D	E
RNAV MDA *	520/40	512 (600-3/4)	520/55	512 (600-1)	
CIRCLING **	540-1	529 (600-1)	580-1 1/2 569 (600-1 1/2)	580-2 569 (600-2)	760-2 3/4 749 (800-2 3/4)

REIL Rwy 26
HIRL Rwy 8-26

HAMPTON, VIRGINIA

37°05'N-76°21'W

LANGLEY AFB (KLFJ)

Amdt 2 12152

RNAV (GPS) RWY 26

NE-3, 07 FEB 2013 to 07 MAR 2013

NE-3, 07 FEB 2013 to 07 MAR 2013