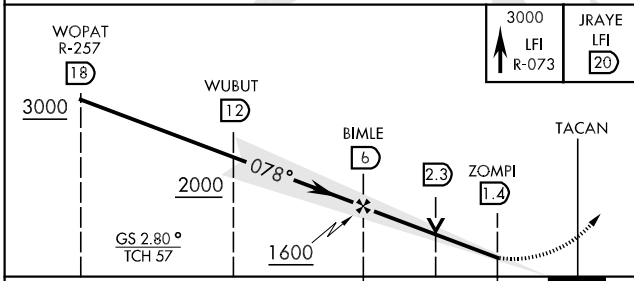
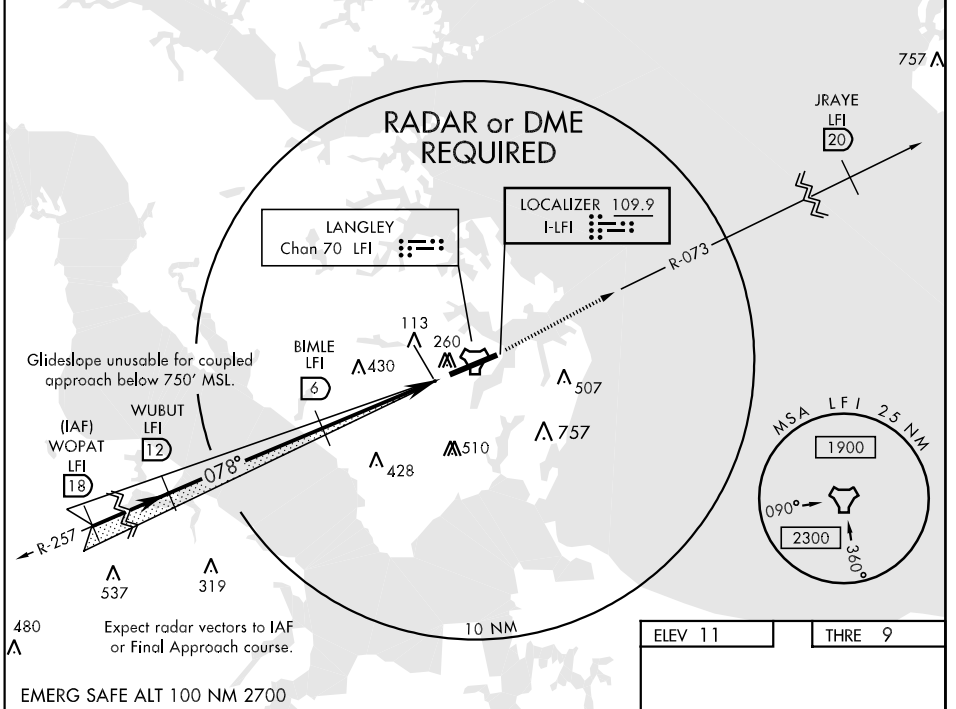


| | | | | |
|--|---|--|-------------------------------|---|
| LOC I-LFI 109.9 | APCH CRS 078° | Rwy Idg 10,000 THRE Arpt Elev 11 | AL-185 [USAF] | LANGLEY AFB (KLF1) |
| ▼ * When ALS inop, increase all CAT RVR to 40 and vis to 3/4 mile. ** When ALS inop, increase CAT AB RVR to 55 and vis to 1 mile, CAT CDE vis to 1 1/8 miles. | | | ALS-F1 | MISSED APPROACH: Climb to 3000 via LFI R-073 to 20 DME (JRAYE). |
| ATIS ★ 270.1 | NORFOLK APP CON 125.7 335.625 | LANGLEY TOWER 125.0 253.5 | GND CON 121.7 275.8 | CLNC DEL 118.85 257.625 |

*** Circling S of Rwy 8-26 not authorized.



| CATEGORY | A | B | C | D | E |
|-------------|--------|---------------|-----------------|-------------|-----------------|
| S-ILS 8 * | 209/24 | | 200 | (200-1/2) | |
| S-LOC 8 ** | 480/24 | 471 (500-1/2) | 480/50 | | 471 (500-1) |
| CIRCLING*** | 540-1 | 529 (600-1) | 580-1 1/2 | 580-2 | 760-2 3/4 |
| | | | 569 (600-1 1/2) | 569 (600-2) | 749 (800-2 3/4) |

| | | | | | |
|---|--------|------|------|------|------|
| ELEV 11 | THRE 9 | | | | |
| REIL Rwy 26 HIRL Rwy 8-26 FAF to MAP 4.6 NM | | | | | |
| Knots | 60 | 90 | 120 | 150 | 180 |
| Min:Sec | 4:36 | 3:04 | 2:18 | 1:50 | 1:32 |

NE-3, 07 FEB 2013 to 07 MAR 2013

NE-3, 07 FEB 2013 to 07 MAR 2013