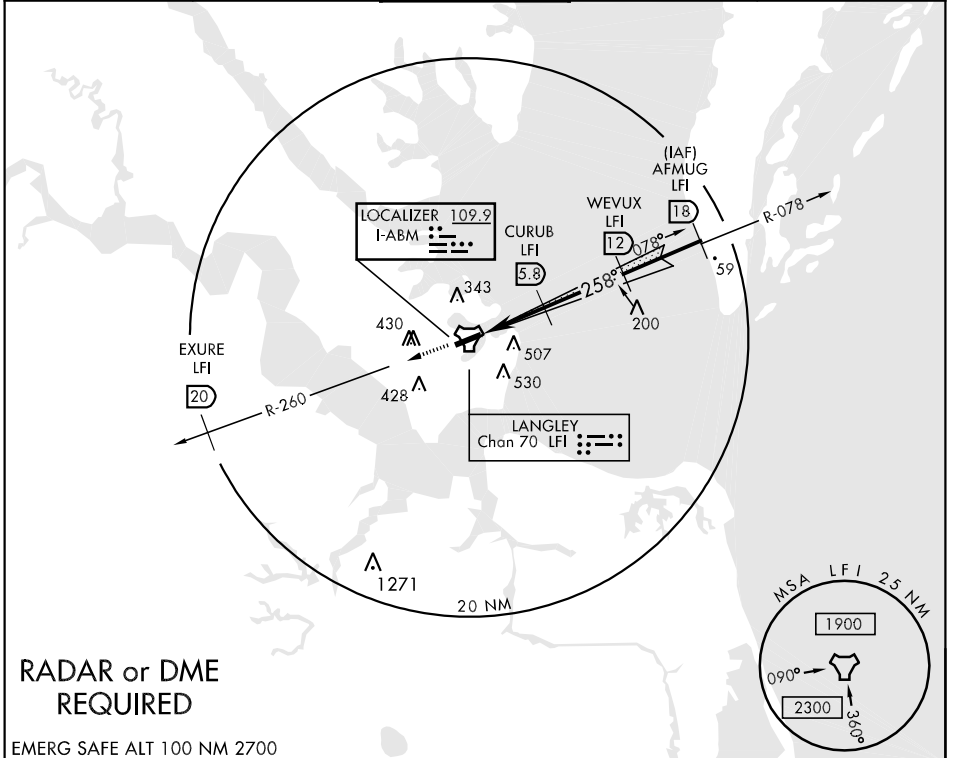


HAMPTON, VIRGINIA

# ILS or LOC/DME RWY 26

LOC I-ABM <b>109.9</b>	APCH CRS <b>258°</b>	Rwy Ldg THRE Arpt Elev <b>10,000</b> <b>8</b> <b>11</b>	JAL-185 [USAF]	LANGLEY AFB (KLF1)
* When ALS inop, increase CAT AB RVR to 55 and vis to 1 mile, CAT CDE RVR to 60 and vis to 1½ miles. ** Circling S of Rwy 8-26 not authorized.			MALSR <b>A5</b>	MISSED APPROACH: Climb to 3000 via LFI R-260 to 20 DME (EXURE).

ATIS * <b>270.1</b>	NORFOLK APP CON <b>125.7 335.625</b>	LANGLEY TOWER <b>125.0 253.5</b>	GND CON <b>121.7 275.8</b>	CLNC DEL <b>118.85 257.625</b>
------------------------	---	-------------------------------------	-------------------------------	-----------------------------------

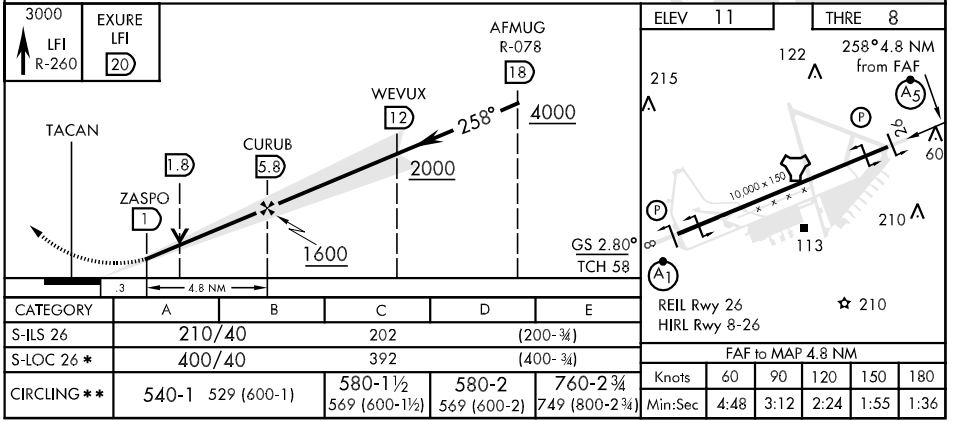


NE-3, 07 FEB 2013 to 07 MAR 2013

NE-3, 07 FEB 2013 to 07 MAR 2013

## RADAR or DME REQUIRED

EMERG SAFE ALT 100 NM 2700



HAMPTON, VIRGINIA 37° 05' N - 76° 21' W LANGLEY AFB (KLF1)

Amdt 3 12152

# ILS or LOC/DME RWY 26