

TACAN LFI Chan <b>70</b>	APCH CRS <b>073°</b>	Rwy Idg <b>10,000</b> THRE <b>9</b> Arpt Elev <b>11</b>
--------------------------	----------------------	---

JAL-185 [USAF]

LANGLEY AFB (KLFJ)

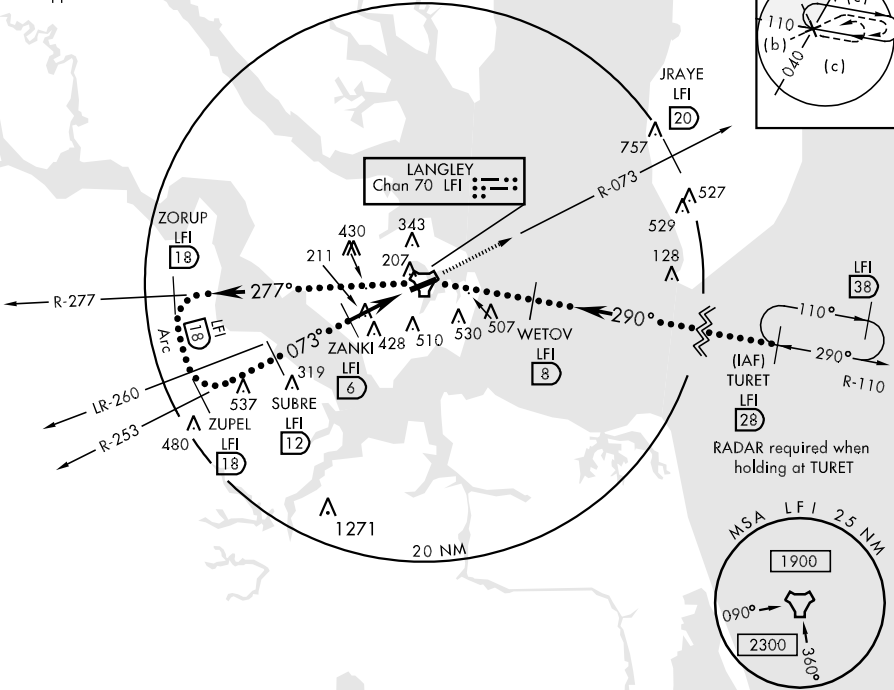
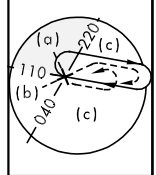
★ When ALS inop, increase CAT CDE vis to 1½ miles.  
 \*\* Circling S of Rwy 8-26 not authorized.



MISSED APPROACH: Climb to 3000 via LFI R-073 to 20 DME (JRAYE).

ATIS ★ <b>270.1</b>	NORFOLK APP CON <b>125.7 335.625</b>	LANGLEY TOWER <b>125.0 253.5</b>	GND CON <b>121.7 275.8</b>	CLNC DEL <b>118.85 257.625</b>
------------------------	---	-------------------------------------	-------------------------------	-----------------------------------

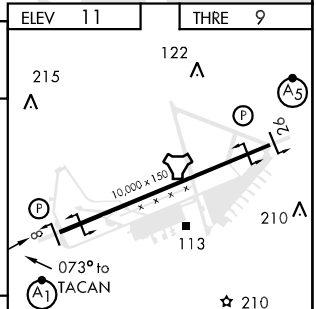
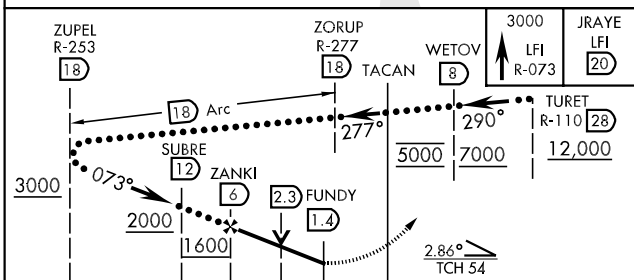
Expect radar vectors to IAF or Final Approach course.



NE-3, 07 FEB 2013 to 07 MAR 2013

NE-3, 07 FEB 2013 to 07 MAR 2013

EMERG SAFE ALT 100 NM 2700



CATEGORY	C	D	E
S-8*	480/50	471 (500-1)	
CIRCLING**	580-1½ 569 (600-1½)	580-2 569 (600-2)	760-2¾ 749 (800-2¾)

ELEV	11	THRE	9
REIL Rwy 26	215	HIRL Rwy 8-26	113