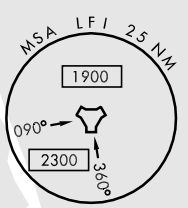
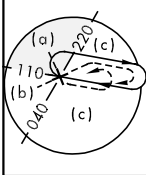
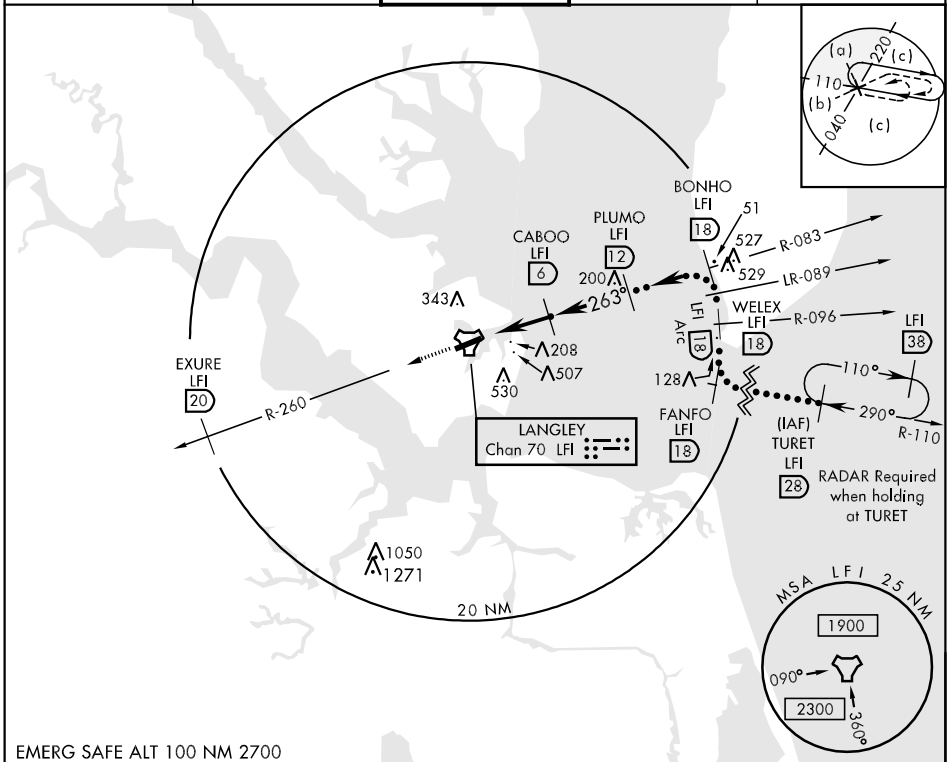


TACAN LFI Chan <b>70</b>	APCH CRS <b>263°</b>	Rwy ldg <b>10,000</b> THRE <b>8</b> Arpt Elev <b>11</b>	JAL-185 [USAF]	LANGLEY AFB (KLFJ)
▼ * When ALS inop, increase CAT CDE vis to 1¼ miles. ** Circling S of Rwy 8-26 not authorized.			MALSRR 	MISSED APPROACH: Climb to 3000 via LFI R-260 to 20 DME (EXURE).

ATIS ★ <b>270.1</b>	NORFOLK APP CON <b>125.7 335.625</b>	LANGLEY TOWER <b>125.0 253.5</b>	GND CON <b>121.7 275.8</b>	CLNC DEL <b>118.85 257.625</b>
------------------------	-----------------------------------------	-------------------------------------	-------------------------------	-----------------------------------



NE-3, 07 FEB 2013 to 07 MAR 2013

NE-3, 07 FEB 2013 to 07 MAR 2013

EMERG SAFE ALT 100 NM 2700

3000 LFI R-260	EXURE LFI 20				ELEV 11	THRE 8
				263° 5.3 NM from FAF 122 A 210 A 113 210 A ☆ 210		
CATEGORY	C	D	E			
S-26 *	440/40	432	(500-¾)			
CIRCLING **	580-1½ 569 (600-1½)	580-2 569 (600-2)	760-2¾ 749 (800-2¾)	REIL Rwy 26 HIRL Rwy 8-26		