

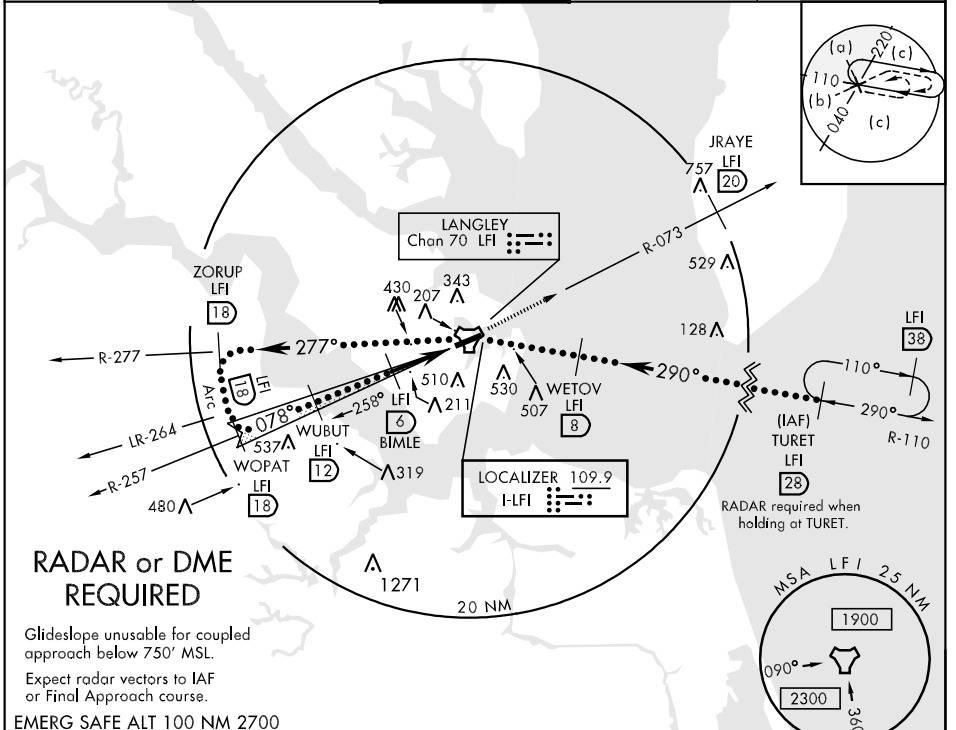
LOC I-LFI 109.9	APCH CRS 078°	Rwy ldg THRE Arpt Elev 10,000 9 11	JAL-185 [USAF]	LANGLEY AFB (KLFJ)
---------------------------	-------------------------	--	----------------	--------------------

▼ * When ALS inop, increase CAT CDE RVR to 40 and vis to 3/4 mile.
 ** When ALS inop, increase CAT CDE vis to 1 3/8 miles.
 *** Circling S of Rwy 8-26 not authorized.



MISSED APPROACH: Climb to 3000 via LFI R-073 to 20 DME (JRAYE).

ATIS ★ 270.1	NORFOLK APP CON 125.7 335.625	LANGLEY TOWER 125.0 253.5	GND CON 121.7 275.8	CLNC DEL 118.85 257.625
------------------------	---	-------------------------------------	-------------------------------	-----------------------------------



NE-3, 07 FEB 2013 to 07 MAR 2013

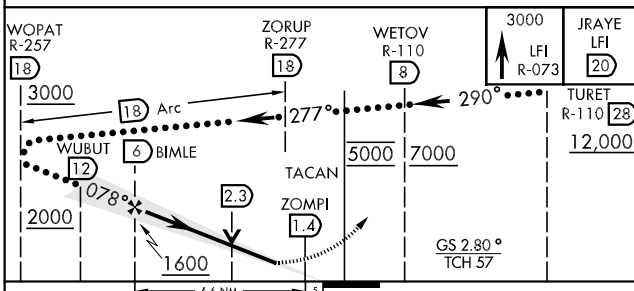
NE-3, 07 FEB 2013 to 07 MAR 2013

RADAR or DME REQUIRED

Glideslope unusable for coupled approach below 750' MSL.

Expect radar vectors to IAF or Final Approach course.

EMERG SAFE ALT 100 NM 2700



ELEV 11	THRE 8
REIL Rwy 26 HIRL Rwy 8-26	
FAF to MAP 4.6 NM	
Knots	120 140 160 180 200
Min:Sec	2:18 1:58 1:43 1:32 1:23

CATEGORY	C	D	E
S-ILS 8 *	209/24	200	(200-1/2)
S-LOC 8 **	480/50	471	(500-1)
CIRCLING ***	580-1 1/2 569 (600-1 1/2)	580-2 569 (600-2)	760-2 3/4 749 (800-2 3/4)