

WAAS CH 99399 W07A	APP CRS 072°	Rwy Idg TDZE Apt Elev	10599 683 684
--	------------------------	-----------------------------	--

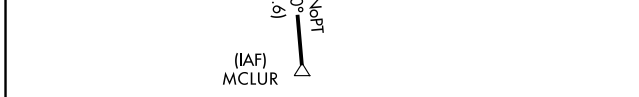
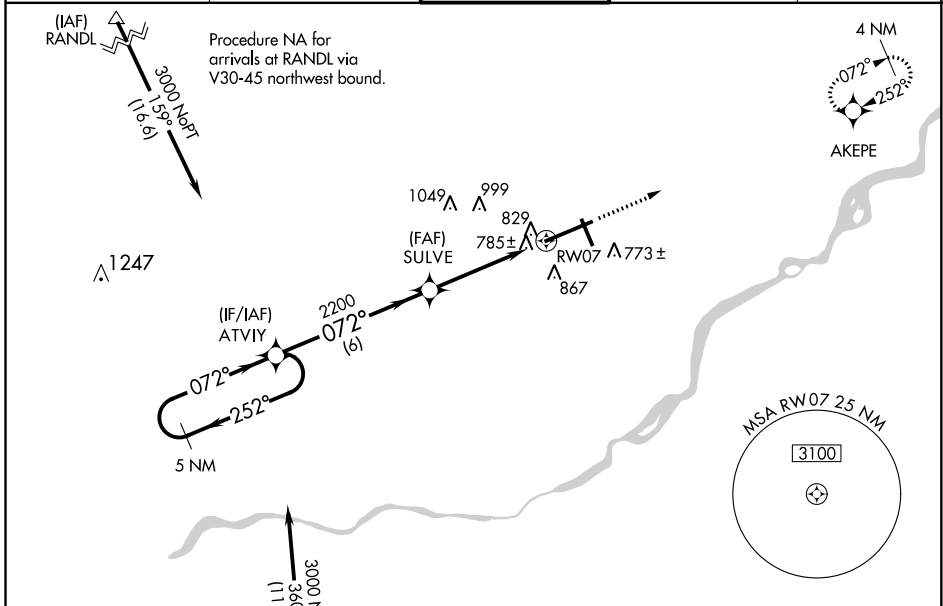
RNAV (GPS) RWY 7

TOLEDO EXPRESS (TOL)

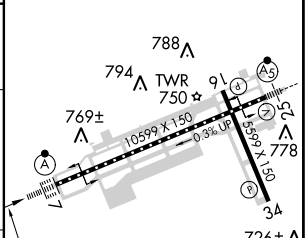
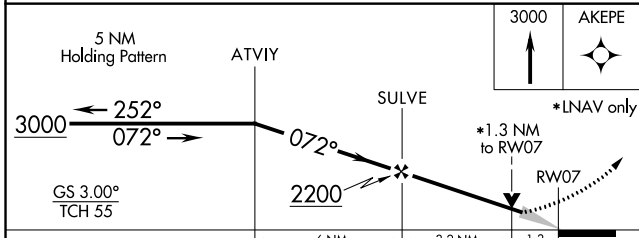
⚠ Baro-VNAV NA Below -16°C (4°F). DME/DME RNP-0.3 NA. When local altimeter setting not received, use Lambertville/Toledo Suburban altimeter setting and increase all DA/MDA 40 feet. Increase LNAV/VNAV all Cats and LNAV Cat E visibility ¼ mile. For inoperative ASR ALSF, increase LPV visibility to RVR 6000 all Cats, increase LNAV/VNAV Cat E visibility to 1½ mile, increase LNAV Cat E visibility to 1½ mile. VDP and Baro-VNAV NA when using Lambertville/Toledo Suburban altimeter setting.

ALSF-2
⚠ MISSED APPROACH: Climb to 3000 direct AKEPE and hold.

ATIS 118.75 290.225	TOLEDO APP CON 134.35 317.55	TOLEDO TOWER 118.1 285.4	GND CON 121.9 348.6	CLNC DEL 121.75 348.6
-------------------------------	--	------------------------------------	-------------------------------	---------------------------------



ELEV 684	D	TDZE 683
----------	----------	----------



CATEGORY	A	B	C	D	E
LPV DA		1018/40	335 (400-¾)		
LNAV/VNAV DA		1129/50	446 (500-1)		
LNAV MDA	1140/24	457 (500-½)	1140/40 457 (500-¾)	1140/50	457 (500-1)
CIRCLING	1180-1	496 (500-1)	1180-1½ 496 (500-1½)	1240-2	1400-2½ 716 (800-2½)

TDZ/CL Rwy 7
HIRL Rwy 7-25
MIRL Rwy 16-34
REIL Rws 16 and 34

EC-2, 07 FEB 2013 to 07 MAR 2013

EC-2, 07 FEB 2013 to 07 MAR 2013