

TOLEDO, OHIO

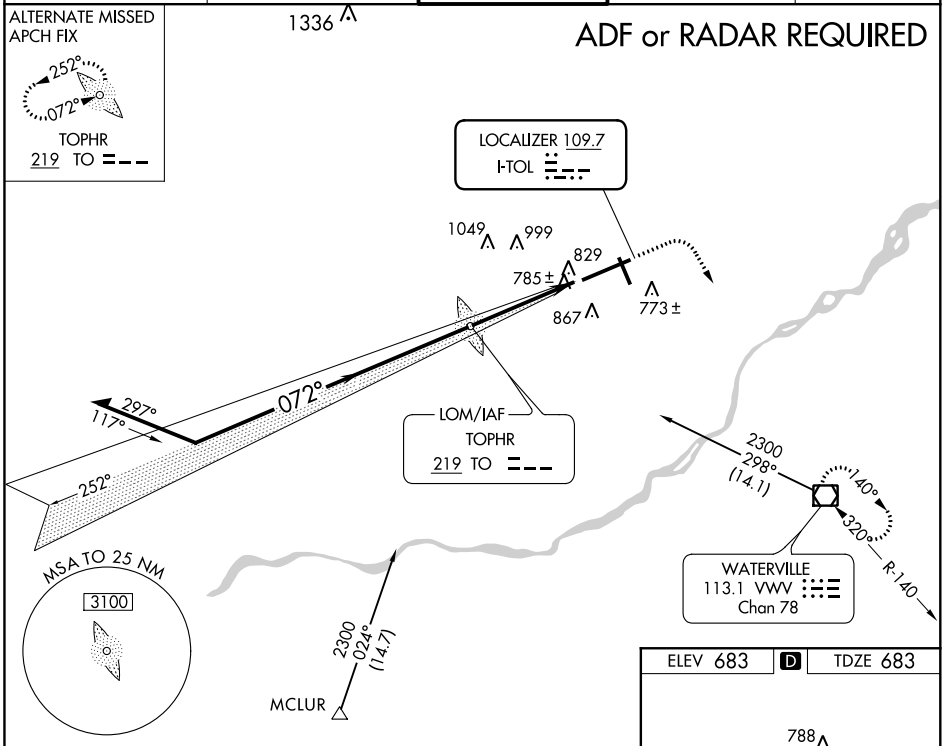
AL-184 (FAA)

# ILS or LOC RWY 7 TOLEDO EXPRESS (TOL)

LOC I-TOL <b>109.7</b>	APP CRS <b>072°</b>	Rwy ldg <b>10599</b> TDZE <b>683</b> Apt Elev <b>683</b>
---------------------------	------------------------	--

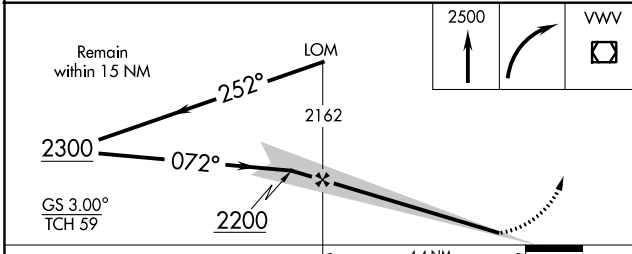
ALSF-2 ASR	For inoperative ALSF, increase S-ILS 7 Cat E visibility to ¾ mile, S-LOC 7 Cat E visibility to 1½ mile.	MISSED APPROACH: Climb to 2500 then right turn direct VVV VOR/DME and hold.
	ASR	

ATIS <b>118.75 290.225</b>	TOLEDO APP CON <b>134.35 317.55</b>	TOLEDO TOWER <b>118.1 285.4</b>	GND CON <b>121.9 348.6</b>	CLNC DEL <b>121.75 348.6</b>
-------------------------------	--	------------------------------------	-------------------------------	---------------------------------

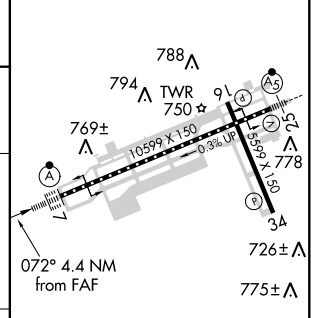


EC-2, 07 FEB 2013 to 07 MAR 2013

EC-2, 07 FEB 2013 to 07 MAR 2013



ELEV 683		TDZE 683
----------	--	----------



CATEGORY	A	B	C	D	E
S-ILS 7	883/18 200 (200-½)				883/24 200 (200-½)
S-LOC 7	1080/24 397 (400-½)		1080/40 397 (400-¾)		1080/50 397 (400-1)
CIRCLING	1180-1 497 (500-1)	1180-1½ 497 (500-1½)	1240-2 557 (600-2)	1400-2½ 717 (800-2½)	

TDZ/CL Rwy 7	883/24 200 (200-½)				
HIRL Rwy 7-25	MIRL Rwy 16-34				
REIL Rwy 16 and 34	FAF to MAP 4.4 NM				
Knots	60	90	120	150	180
Min:Sec	4:24	2:56	2:12	1:46	1:28

TOLEDO, OHIO  
Amdt 28 12096

41°35'N-83°48'W

# TOLEDO EXPRESS (TOL) ILS or LOC RWY 7