

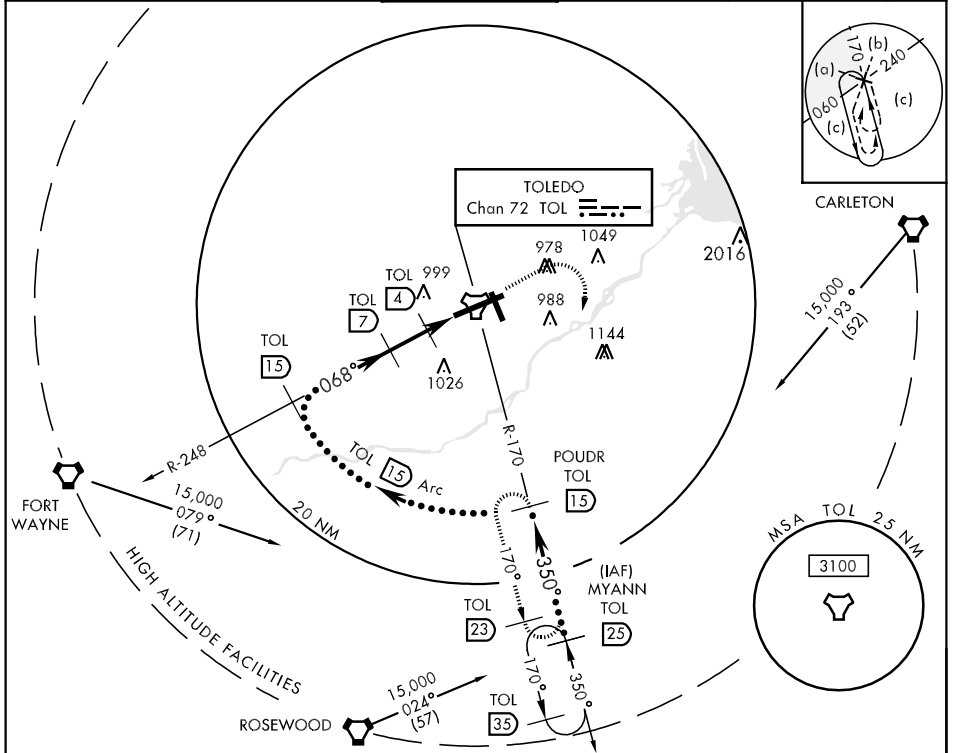
TACAN Tol Chan <b>72</b>	APCH CRS <b>068°</b>	Rwy Idg <b>10,599</b> TDZE <b>683</b> Arprt Elev <b>683</b>	JAL-184 [USAf]	TOLEDO EXPRESS (KTOL)
--------------------------	----------------------	---	----------------	-----------------------

ALSf-2



MISSED APPROACH: Climb to 3000 then right turn via TOL R-170 to POWDR and hold.

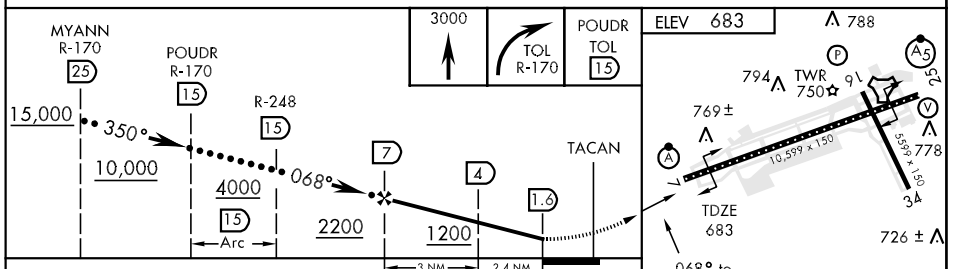
ATIS <b>118.75 271.3</b>	TOLEDO APP CON <b>126.1 317.55</b>	TOLEDO TOWER <b>118.1 285.4</b>	GND CON <b>121.9 348.6</b>	CLNC DEL <b>121.75</b>	ASR
-----------------------------	---------------------------------------	------------------------------------	-------------------------------	---------------------------	-----



EC-2, 07 FEB 2013 to 07 MAR 2013

EC-2, 07 FEB 2013 to 07 MAR 2013

EMERG SAFE ALT 100 NM 4000



CATEGORY	C	D	E
S-7	1060/24 377 (400-1/2)	1060/50 377 (400-1)	
CIRCLING	1180-1 1/2 496 (500-1 1/2)	1240-2 556 (600-2)	1360-2 1/2 676 (700-2 1/2)

ELEV 683  
A 788  
794 A TWR 750  
769 ± A  
778  
726 ± A  
775 ± A  
068° to TACAN  
HIRL Rwy 7-25  
MIRL Rwy 16-34  
REIL Rws 16 and 34  
TDZL/CL Rwy 7