

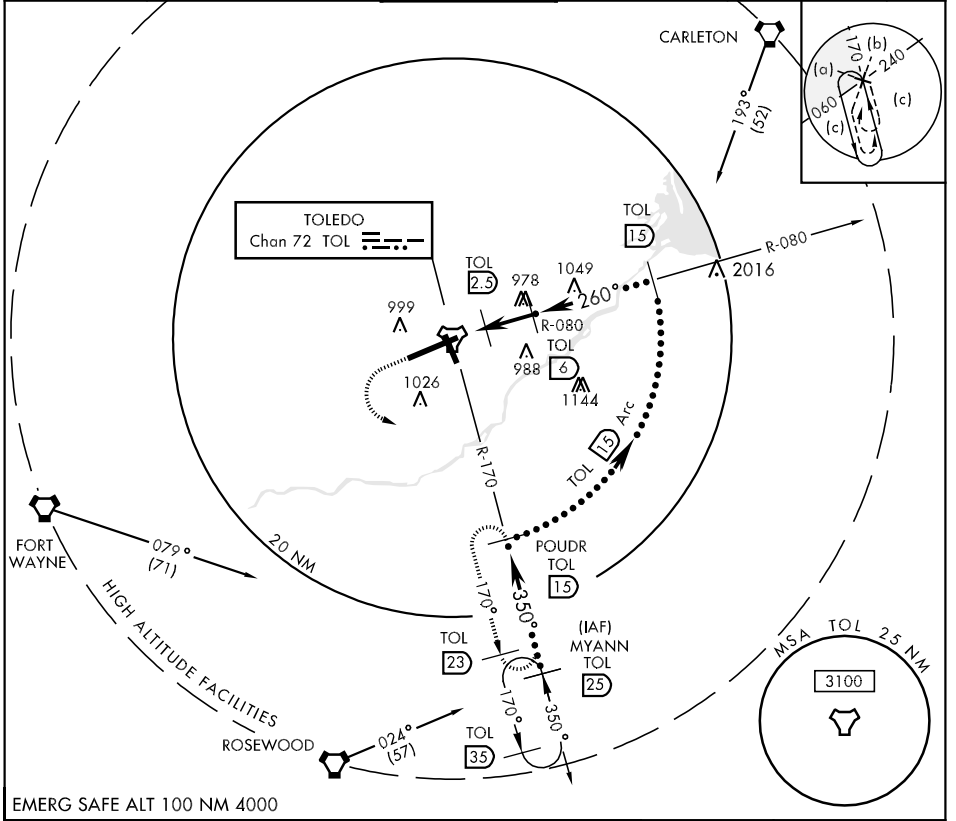
TOLEDO, OHIO

HI-TACAN RWY 25

TACAN TOL Chan 72	APCH CRS 260°	Rwy Idg 10,599 TDZE 678 Arprt Elev 683	JAL-184 [USAF]	TOLEDO EXPRESS (KTOL)
----------------------	------------------	--	----------------	-----------------------

MALSAR (A5) MISSED APPROACH: Climb to 3000 then left turn via TOL R-170 to POUDR and hold.

ATIS 118.75 271.3	TOLEDO APP CON 126.1 317.55	TOLEDO TOWER 118.1 285.4	GND CON 121.9 348.6	CLNC DEL 121.75	ASR
----------------------	--------------------------------	-----------------------------	------------------------	--------------------	-----



EMERG SAFE ALT 100 NM 4000

3000	POUDR TOL 15	ELEV 683	
TOL R-170	POUDR TOL 15	POUDR R-170 15,000	
TACAN	R-080 2400	MYANN R-170 15,000	
	4000	10,000	
	Arc		
	8 NM	5 NM	
CATEGORY	C	D	E
S-25	1040-3/4 362 (400-3/4)	1040-1 362 (400-1)	
CIRCLING	1180-1 1/2 497 (500-1 1/2)	1240-2 557 (600-2)	1360-2 1/2 677 (700-2 1/2)

Detailed diagram of the runway area showing taxiway layout, lights, and altitudes. Key features include:

- Runway: 10,599 x 150
- Altitudes: 726 ± A, 775 ± A
- Navigation Aids: TACAN, TDZE 678, TWR 750, 778, 788, 794, 769 ±
- Angles: 260° to TACAN, 352°

TOLEDO, OHIO 41° 35'N-83° 48'W TOLEDO EXPRESS (KTOL)

HI-TACAN RWY 25

Amtd 4 10070

EC-2, 07 FEB 2013 to 07 MAR 2013

EC-2, 07 FEB 2013 to 07 MAR 2013