

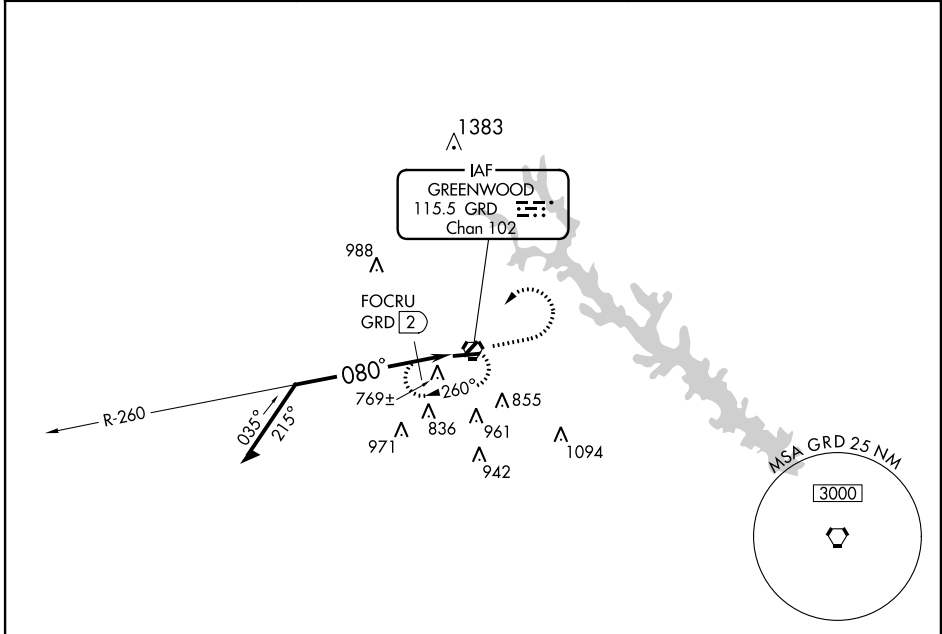
VORTAC GRD 115.5 Chan 102	APP CRS 080°	Rwy Idg 5003 TDZE 631 Apt Elev 631
---	------------------------	---

VOR or GPS RWY 9 GREENWOOD COUNTY (GRD)

⚠ When local altimeter setting not received, use Anderson altimeter setting and increase all MDA 100 feet and S-9 and FOCRU FIX MINIMUMS Cats. C and D visibility ¼ mile, Circling Cat. D visibility ½ mile.

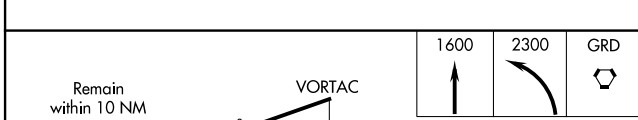
⚠ MISSED APPROACH: Climb to 1600 then climbing left turn to 2300 direct GRD VORTAC and hold.

ASOS 121.125	GREER APP CON ★ 120.6 350.2	UNICOM 122.8 (CTAF) 0
------------------------	---------------------------------------	---------------------------------



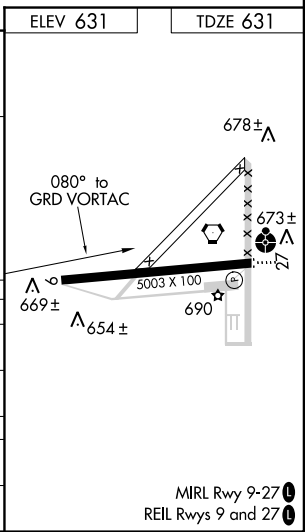
SE-2, 07 FEB 2013 to 07 MAR 2013

SE-2, 07 FEB 2013 to 07 MAR 2013



	ELEV 631	TDZE 631
	1600	2300 GRD
	*1200 when using Anderson altimeter setting.	

CATEGORY	A	B	C	D
S-9	1100-1	469 (500-1)	1100-1¼ 469 (500-1¼)	1100-1½ 469 (500-1½)
CIRCLING	1100-1	469 (500-1)	1100-1½ 469 (500-1½)	1280-2 649 (700-2)
FOCRU FIX MINIMUMS				
S-9	1020-1 389 (400-1)		1020-1¼ 389 (400-1¼)	
CIRCLING	1080-1 449 (500-1)	1100-1 469 (500-1)	1100-1½ 469 (500-1½)	1280-2 649 (700-2)



MIRL Rwy 9-27 0
REIL Rwys 9 and 27 0