

VORTAC GRD	APP CRS	Rwy Idg	5003
115.5	280°	TDZE	629
Chan 102		Apt Elev	631

VOR RWY 27

GREENWOOD COUNTY (GRD)

When local altimeter setting not received, use Anderson altimeter setting and increase all MDA 100 feet and S-27 Cats. C and D visibility ¼ mile, Circling Cat. C visibility ¼ mile and Cat. D visibility ½ mile, CEPUK FIX MINIMUMS: Increase S-27 Cat. C visibility ½ mile, Cat. D visibility ¼ mile, Circling Cat. D visibility ½ mile. Inoperative table does not apply to S-27 Cat. C. When using Anderson altimeter setting, inoperative table does not apply to S-27 Cat. C or CEPUK FIX MINIMUMS: S-27 Cat. C.

ODALS

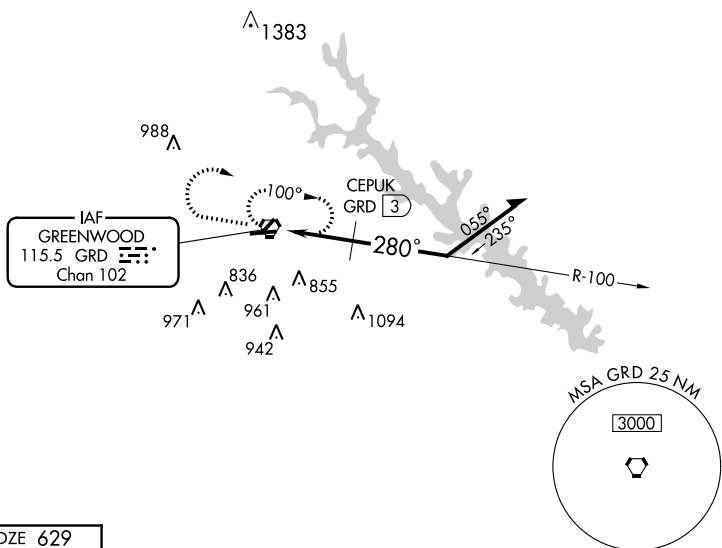


MISSED APPROACH: Climb to 1800 then climbing right turn to 2300 direct GRD VORTAC and hold.

ASOS
121.125

GREER APP CON *
120.6 350.2

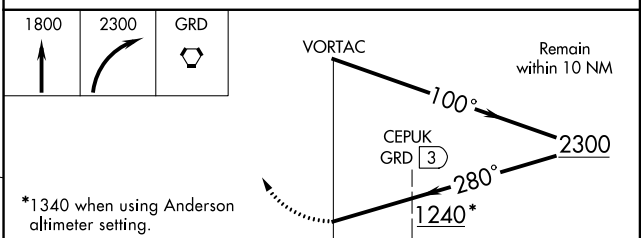
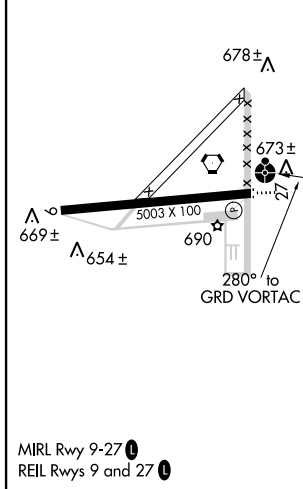
UNICOM
122.8(CTAF) 0



SE-2, 07 FEB 2013 to 07 MAR 2013

SE-2, 07 FEB 2013 to 07 MAR 2013

ELEV 631	TDZE 629
----------	----------



CATEGORY	A	B	C	D
S-27	1240-¾	611 (700-¾)	1240-1¾ 611 (700-1¾)	1240-2 611 (700-2)
CIRCLING	1240-1	609 (700-1)	1240-1¾ 609 (700-1¾)	1280-2 649 (700-2)
CEPUK FIX MINIMUMS				
S-27	1020-¾ 391 (400-¾)			1020-1¼ 391 (400-1¼)
CIRCLING	1080-1 449 (500-1)	1100-1 469 (500-1)	1100-1½ 469 (500-1½)	1280-2 649 (700-2)