

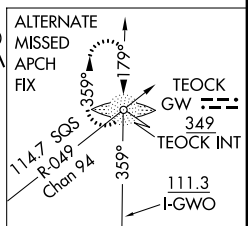
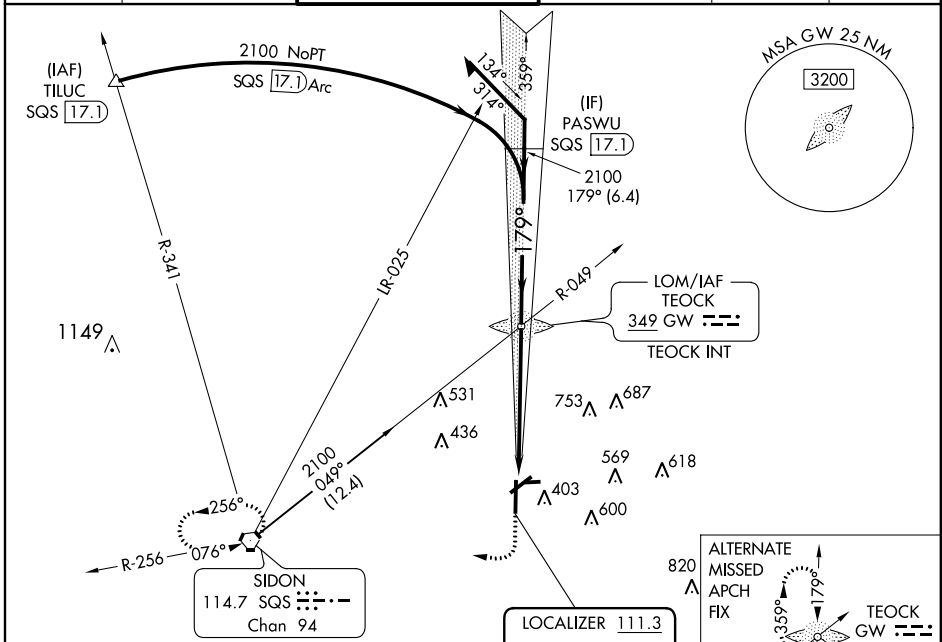
LOC I-GWO 111.3	APP CRS 179°	Rwy Idg THRE Apt Elev	6501 145 162
---------------------------	------------------------	-----------------------------	---

ILS or LOC RWY 18

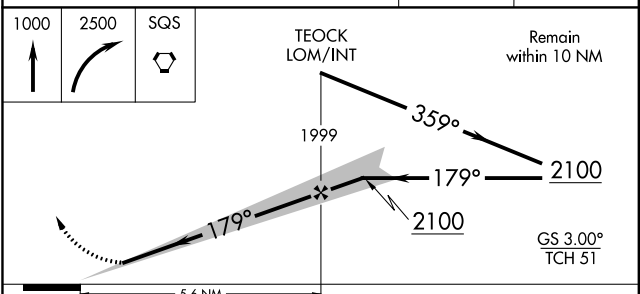
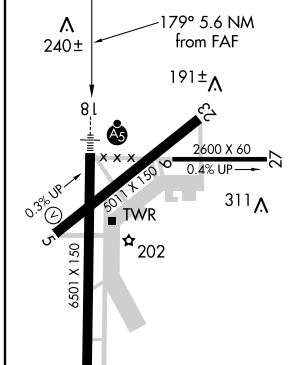
GREENWOOD-LEFLORE (GWO)

<p>▽ For inoperative MALSR, increase S-LOC 18 Cats A, B visibility to 1 mile.</p> <p>▲ When local altimeter setting not received, use Greenville altimeter setting and increase DA to 454 feet and all visibilities ¼ mile; increase all MDA 120 feet and visibility Cat C and D ¼ mile.</p>	<p>MALSR</p>	<p>MISSED APPROACH: Climb to 1000 then climbing right turn to 2500 direct SQS VORTAC and hold.</p>
--	---------------------	---

ASOS 119.975	MEMPHIS CENTER 132.5 259.1	GREENWOOD TOWER * 118.35 (CTAF) 0 367.6	GND CON 125.55 373.4	CLNC DEL 125.55	UNICOM 122.95
------------------------	--------------------------------------	---	--------------------------------	---------------------------	-------------------------



ELEV 162	THRE 145
----------	----------



CATEGORY	A	B	C	D
S-ILS 18	345-½ 200 (200-½)			
S-LOC 18	600-¾	455 (500-¾)	600-⅞	455 (500-⅞)
CIRCLING	760-1	598 (600-1)	780-1¾	780-2 618 (700-1¾)

FAF to MAP 5.6 NM					
Knots	60	90	120	150	180
Min:Sec	5:36	3:44	2:48	2:14	1:52

SC-4, 07 FEB 2013 to 07 MAR 2013

SC-4, 07 FEB 2013 to 07 MAR 2013