

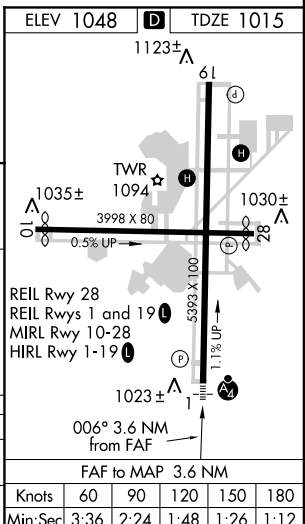
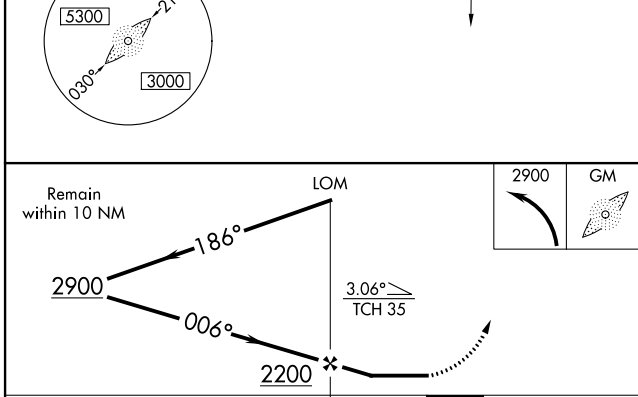
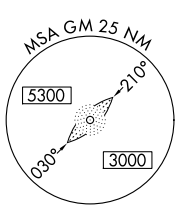
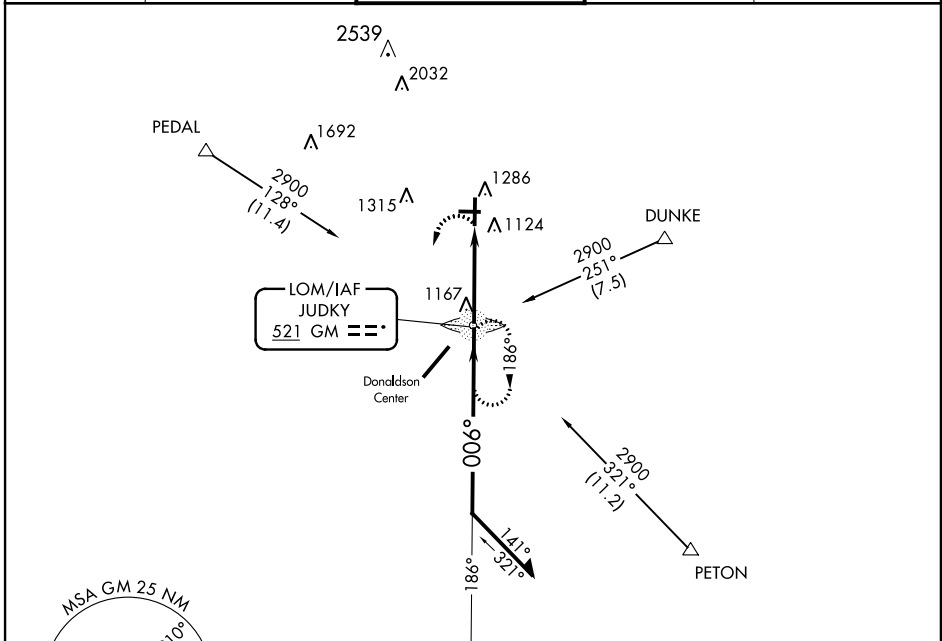
LOM GM <b>521</b>	APP CRS <b>006°</b>	Rwy Idg <b>5393</b> TDZE <b>1015</b> Apt Elev <b>1048</b>
----------------------	------------------------	--

**NDB RWY 1**  
GREENVILLE DOWNTOWN (GMU)

**NA** Inoperative table does not apply to Cat C. When local altimeter setting not received, use Greer altimeter setting and increase all MDA 40 feet; increase S-1 Cat C visibility ¼.

**MALSF** MISSED APPROACH: Climbing left turn to 2900 direct GM LOM and hold, continue climb-in-hold to 2900.

ASOS <b>127.075</b>	GREER APP CON ★ <b>118.8 385.4</b>	GREENVILLE TOWER ★ <b>119.9 (CTAF) 257.7</b>	GND CON <b>121.25</b>	UNICOM <b>122.95</b>
------------------------	---------------------------------------	---	--------------------------	-------------------------



CATEGORY	A	B	C	D
S-1	1480-¾ 465 (500-¾)		1480-1¼ 465 (500-1¼)	1480-1½ 465 (500-1½)
CIRCLING	1620-1 572 (600-1)		1620-1½ 572 (600-1½)	1740-2¼ 692 (700-2¼)

Knots	60	90	120	150	180
Min:Sec	3:36	2:24	1:48	1:26	1:12

SE-2, 07 FEB 2013 to 07 MAR 2013

SE-2, 07 FEB 2013 to 07 MAR 2013