

LOC I-GMU 109.7	APP CRS 006°	Rwy Idg TDZE Apt Elev	5393 1015 1048
---------------------------	------------------------	-----------------------------	---

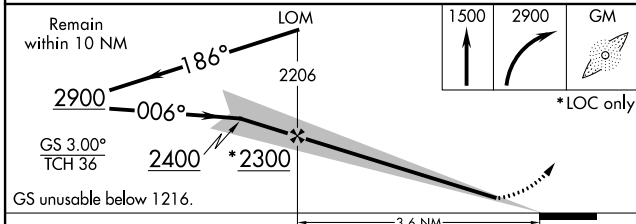
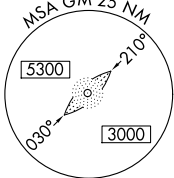
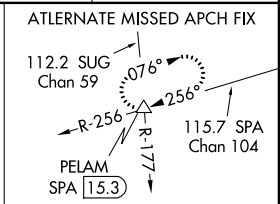
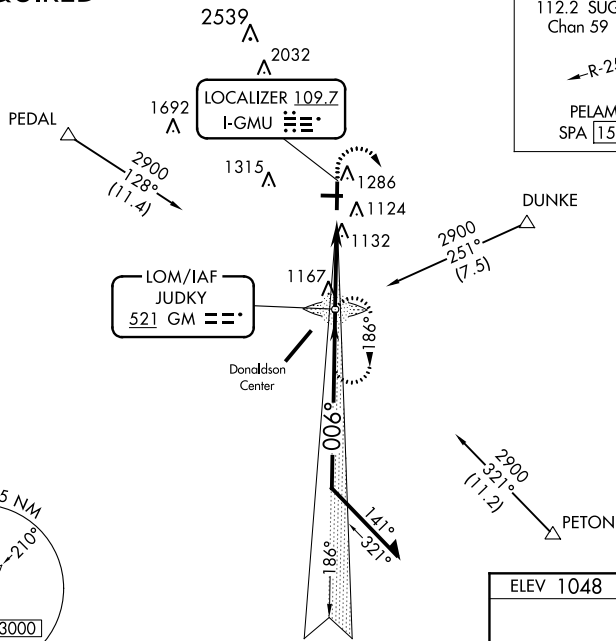
ILS or LOC RWY 1

GREENVILLE DOWNTOWN (GMU)

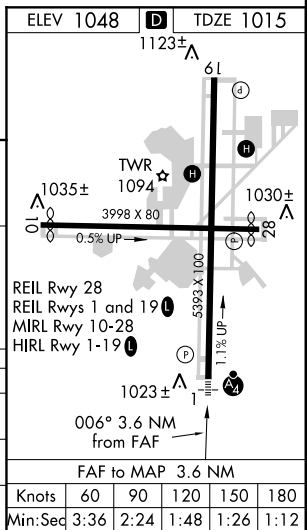
<p>▽ When local altimeter setting not received, use Greer altimeter setting and increase all DA 29 feet and all MDA 40 feet: increase S-ILS 1 all Cats visibility ¼, increase S-LOC 1 Cat D visibility ¼ mile. Inoperative table does not apply to S-LOC 1 Cat C.</p> <p>▲ ASR</p>	<p>MALSF</p>	<p>MISSED APPROACH: Climb to 1500 then climbing right turn to 2900 direct GM LOM and hold, continue climb-in-hold to 2900.</p>
--	--------------	--

ASOS 127.075	GREER APP CON ★ 118.8 385.4	GREENVILLE TOWER ★ 119.9 (CTAF) 0 257.7	GND CON 121.25	UNICOM 122.95
------------------------	---------------------------------------	--	--------------------------	-------------------------

ADF REQUIRED



CATEGORY	A	B	C	D
S-ILS 1	1216-¾		201 (200-¾)	
S-LOC 1	1420-¾	405 (400-¾)	1420-1¼	405 (400-1¼)
CIRCLING	1620-1	572 (600-1)	1620-1½	1740-2¼
		572 (600-1½)	692 (700-2¼)	



SE-2, 07 FEB 2013 to 07 MAR 2013

SE-2, 07 FEB 2013 to 07 MAR 2013

Knots	60	90	120	150	180
Min:Seq	3:36	2:24	1:48	1:26	1:12