

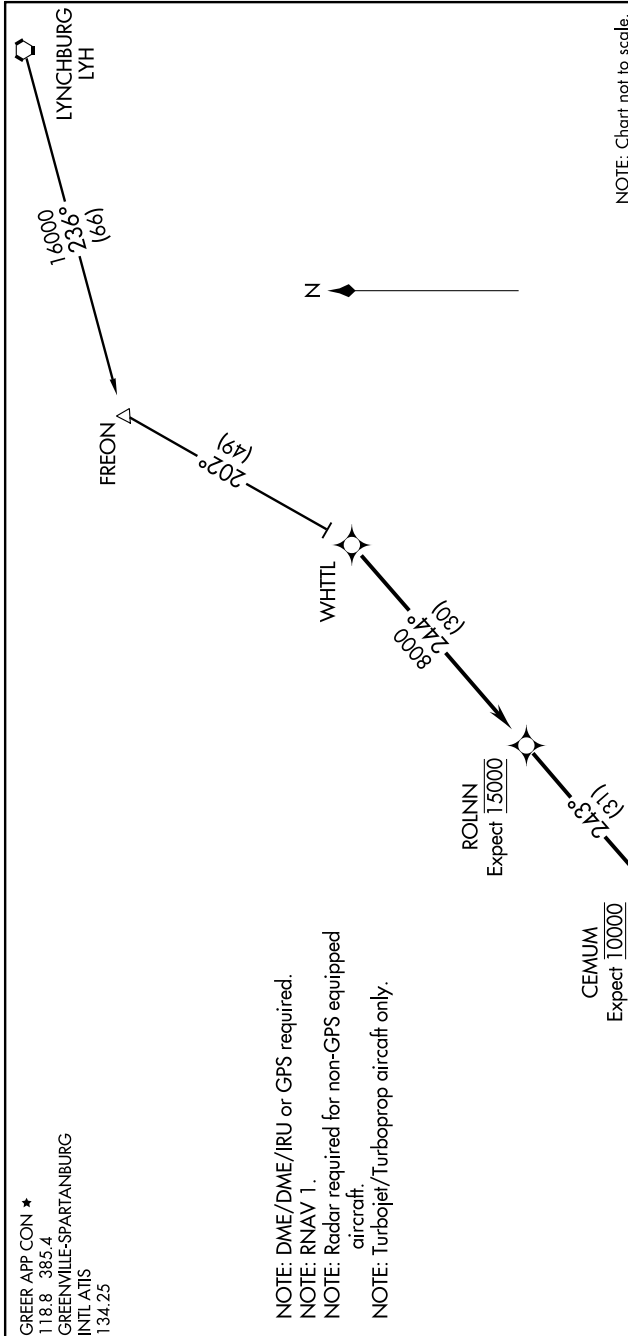
WHITL TWO ARRIVAL(RNAV)

GREENVILLE, SOUTH CAROLINA

SE-2, 07 FEB 2013 to 07 MAR 2013

GREER APP CON ★
118.8 385.4
GREENVILLE-SPARTANBURG
INTL ATIS
134.25

NOTE: DME/DME/IRU or GPS required.
NOTE: RNAV 1.
NOTE: Radar required for non-GPS equipped aircraft.
NOTE: Turbojet/Turboprop aircraft only.

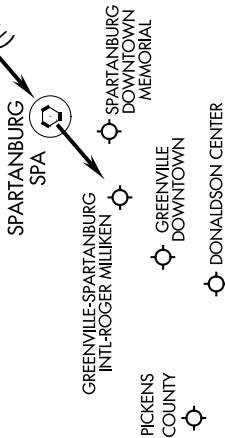


NOTE: Chart not to scale.

ARRIVAL ROUTE DESCRIPTION

LYNCBURG TRANSITION (LYH.WHITL2):

From WHITL on track 244° to ROLINN, then on track 243° to CEMUM, then on track 243° to SPA VORTAC, then on heading 243°, expect radar vectors.



WHITL TWO ARRIVAL (RNAV)

GREENVILLE, SOUTH CAROLINA

SE-2, 07 FEB 2013 to 07 MAR 2013