

APP CRS 224°	Rwy Idg 8000
	TDZE 937
	Apt Elev 955

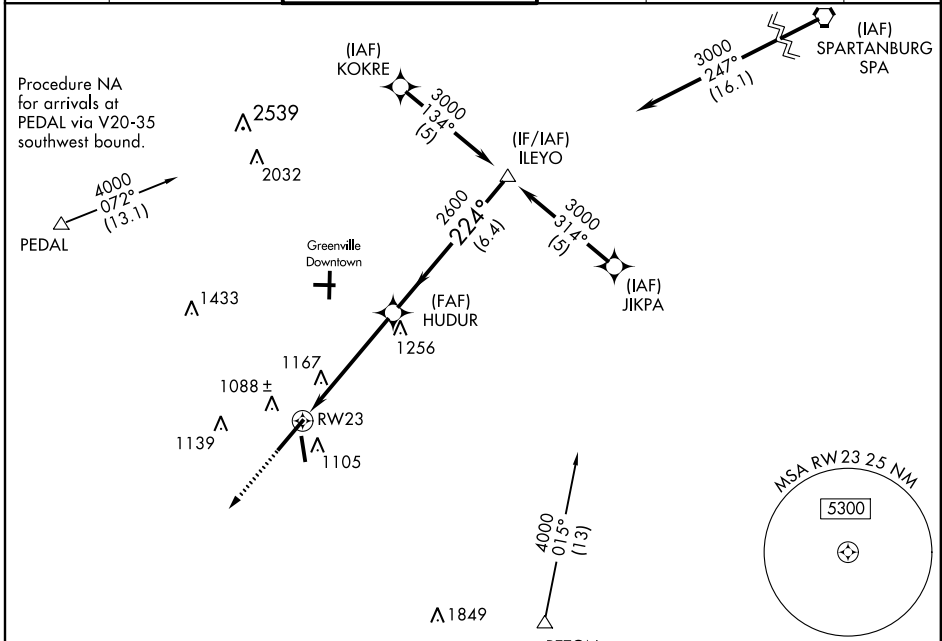
RNAV (GPS) RWY 23

GREENVILLE/ DONALDSON CENTER (GYH)

NA If local altimeter setting not received, use Greer altimeter setting and increase all MDAs 40 feet. VDP NA when using Greer altimeter setting. Helicopter visibility reduction below 3/4 statute mile NA. DME/DME RNP-0.3 NA.

MISSED APPROACH: Climb to 3000 direct NINYI and hold.

AWOS-3 127.325	GREER APP CON ★ 118.8 385.4	DONALDSON TOWER ★ 133.325 (CTAF) 269.25	GND CON 121.4	CLNC DEL 121.4	UNICOM 122.7
--------------------------	---------------------------------------	---	-------------------------	--------------------------	------------------------

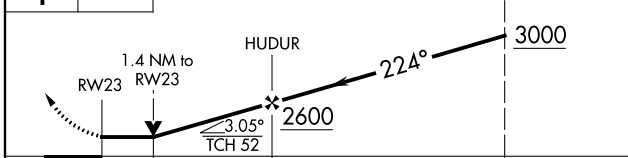


SE-2, 07 FEB 2013 to 07 MAR 2013

SE-2, 07 FEB 2013 to 07 MAR 2013



3000 NINYI VGSI and descent angles not coincident (VGSI Angle 4.14/TCH 80). Procedure Turn NA



CATEGORY	A	B	C	D
LNVA MDA	1420-1	483 (500-1)	1420-1½ 483 (500-1½)	1420-1½ 483 (500-1½)
CIRCLING	1420-1	465 (500-1)	1480-1½ 525 (600-1½)	1520-2 565 (600-2)

