

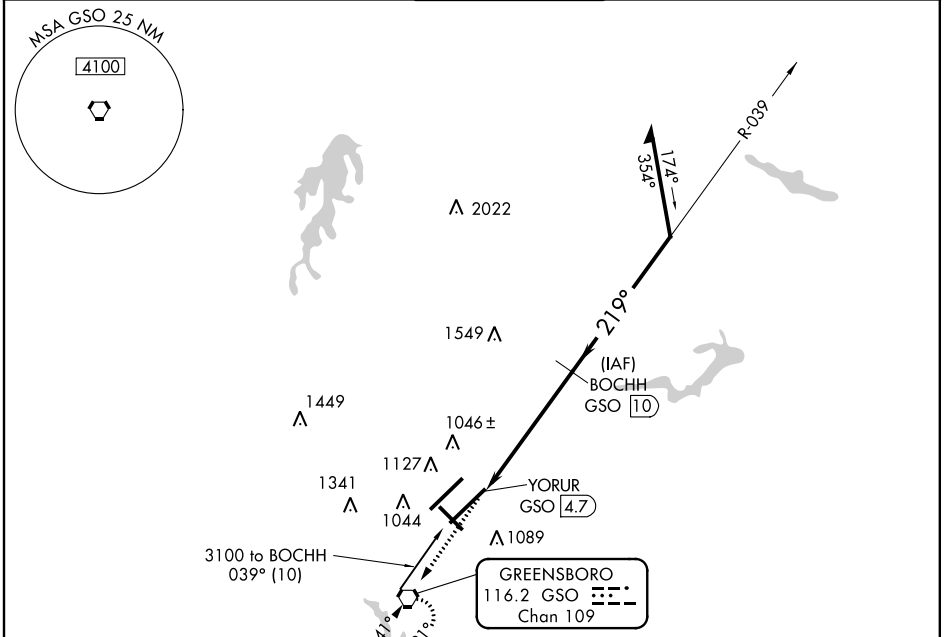
VORTAC GSO	APP CRS	Rwy Idg	9601
116.2	219°	TDZE	889
Chan 109		Apt Elev	926

VOR/DME RWY 23L

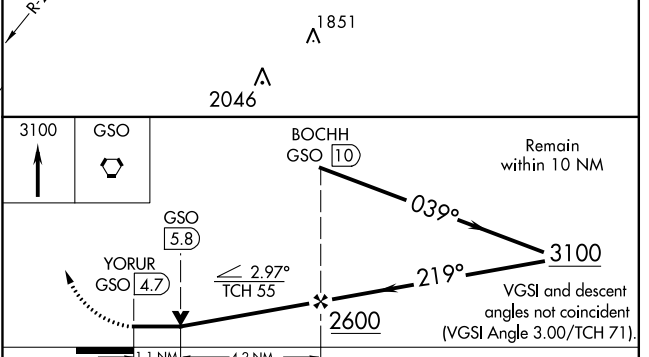
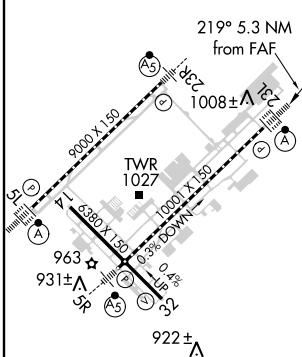
GREENSBORO/PIEDMONT TRIAD INTL (GSO)

	For inoperative ALSIF, increase S-23L Cat D visibility to RVR 6000.	MISSED APPROACH: Climb to 3100 direct GSO VORTAC and hold, continue climb-in-hold to 3100.

ATIS	GREENSBORO APP CON	GREENSBORO TOWER	GND CON	CINC DEL
128.55	124.35 269.225 118.5 327.075 (050° -249°)	119.1 290.325	121.9 348.6	121.75



ELEV 926	D	TDZE 889
----------	---	----------



CATEGORY	A	B	C	D
S-23L	1300/24	411 (400-½)	1300/40 411 (400-¾)	1300/50 411 (400-1)
CIRCLING	1440-1	514 (600-1)	1440-1½ 514 (600-1½)	1480-2 554 (600-2)

SE-2, 07 FEB 2013 to 07 MAR 2013

SE-2, 07 FEB 2013 to 07 MAR 2013