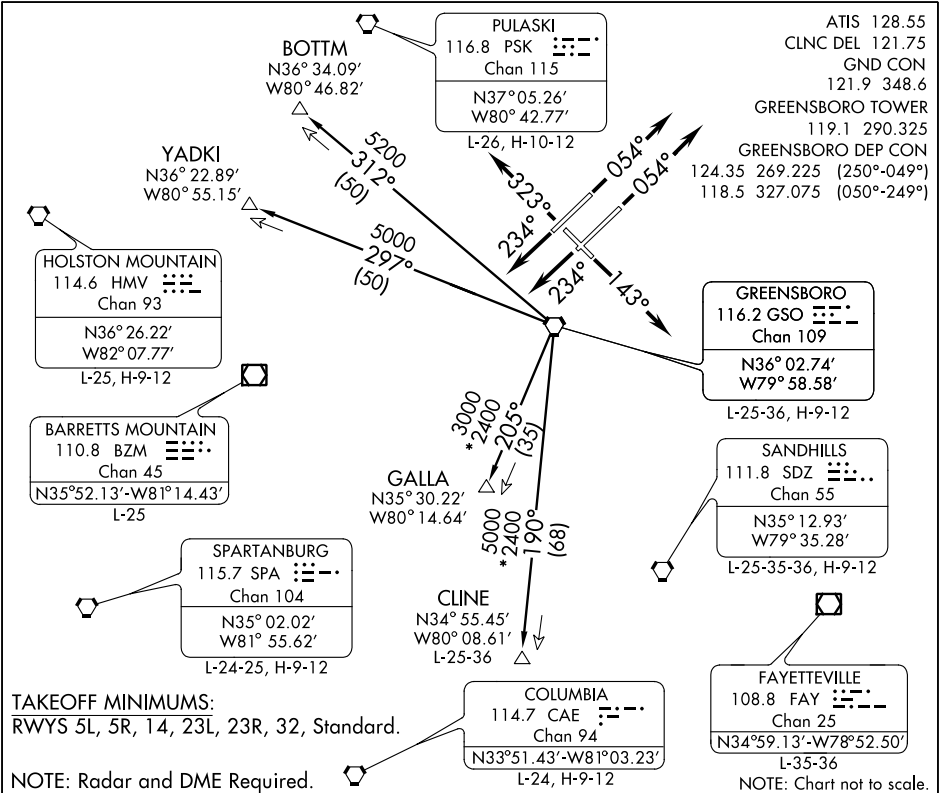


# TRIAD SIX DEPARTURE

GREENSBORO/PIEDMONT TRIAD INTL (GSO)  
SL-178 (FAA) GREENSBORO, NORTH CAROLINA



SE-2, 07 FEB 2013 to 07 MAR 2013

SE-2, 07 FEB 2013 to 07 MAR 2013

## DEPARTURE ROUTE DESCRIPTION

**TAKEOFF RWY 5R:** Climb heading 054°. Thence....

**TAKEOFF RWY 5L:** Climb heading 054°. Thence....

**TAKEOFF RWY 14:** Climb heading 143°. Thence....

**TAKEOFF RWY 23L:** Climb heading 234°. Thence....

**TAKEOFF RWY 23R:** Climb heading 234°. Thence....

**TAKEOFF RWY 32:** Climb heading 323°. Thence....

**Turbjets:** Maintain 5000. **Turboprop/Prop:** Maintain 3000 or assigned altitude.

... Expect vector to intercept assigned radial associated with the issued transition.

Proceed via the depicted radial to the transition fix; thence as filed. If no transition

assigned, expect vector to the appropriate fix. Expect filed altitude/flight level ten

minutes after departure.

**BOTTM TRANSITION (TRI6.BOTTM):** From over GSO VORTAC via GSO R-312 to BOTTM.

**CLINE TRANSITION (TRI6.CLINE):** From over GSO VORTAC via GSO R-190 to CLINE.

**GALLA TRANSITION (TRI6.GALLA):** From over GSO VORTAC via GSO R-205 to GALLA.

**YADKI TRANSITION (TRI6.YADKI):** From over GSO VORTAC via GSO R-297 to YADKI.

# TRIAD SIX DEPARTURE