

APP CRS	Rwy Idg	6380
323°	TDZE	902
	Apt Elev	926

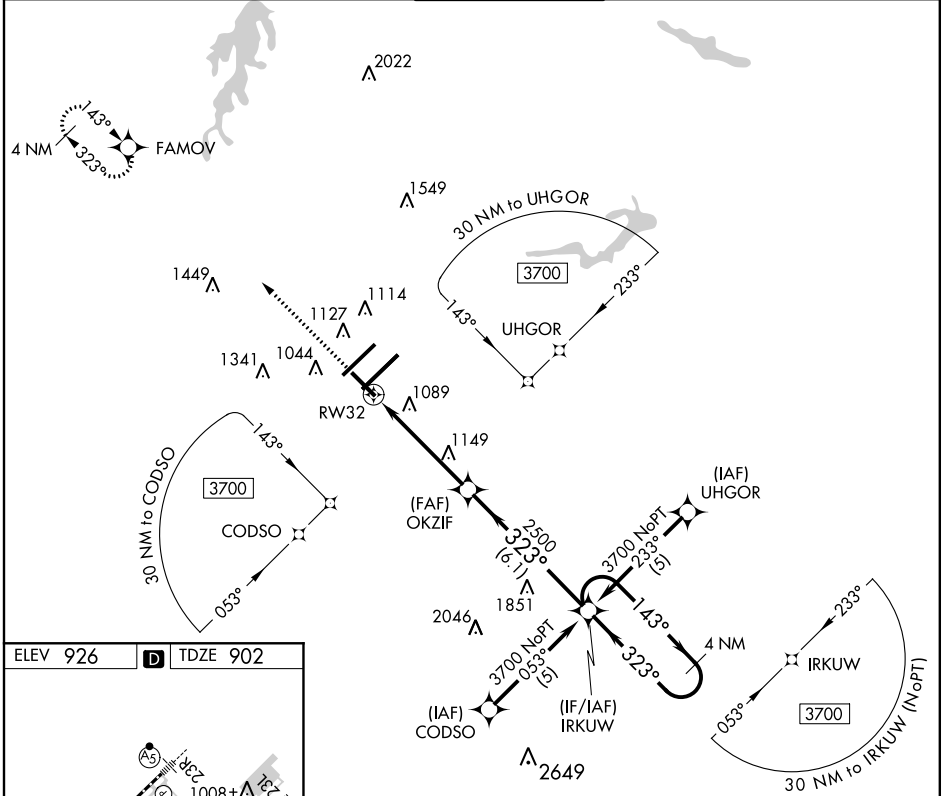
RNAV (GPS) RWY 32

GREENSBORO/ PIEDMONT TRIAD INTL (GSO)

▼ DME/DME RNP-0.3 NA. VDP NA with Winston-Salem altimeter setting. When local altimeter setting not received, use Winston-Salem altimeter setting and increase all MDA 40 feet and increase LNAV Cats C and D visibility ¼ mile.

MISSED APPROACH: Climb to 3200 direct FAMOV and hold.

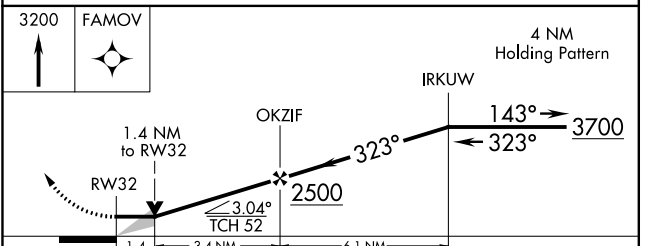
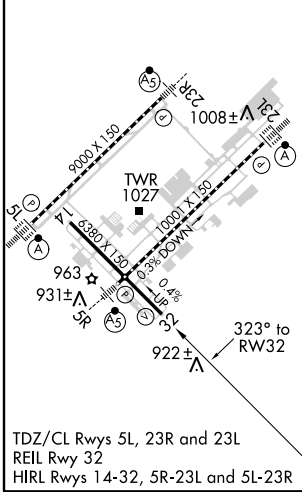
ATIS	GREENSBORO APP CON	GREENSBORO TOWER	GND CON	CLNC DEL
128.55	124.35 269.225 118.5 327.075 (250° -049°) (050° -249°)	119.1 290.325	121.9 348.6	121.75



SE-2, 07 FEB 2013 to 07 MAR 2013

SE-2, 07 FEB 2013 to 07 MAR 2013

ELEV 926	D	TDZE 902
----------	----------	----------



CATEGORY	A	B	C	D
LNAV MDA	1400-1	498 (500-1)	1400-1¼ 498 (500-1¼)	1400-1½ 498 (500-1½)
CIRCLING	1440-1	514 (600-1)	1440-1½ 514 (600-1½)	1480-2 554 (600-2)