

WAAS CH <b>90315</b> <b>W23B</b>	APP CRS <b>234°</b>	Rwy Idg TDZE Apt Elev	<b>9000</b> <b>855</b> <b>926</b>
--	------------------------	-----------------------------	---

# RNAV (GPS) RWY 23R

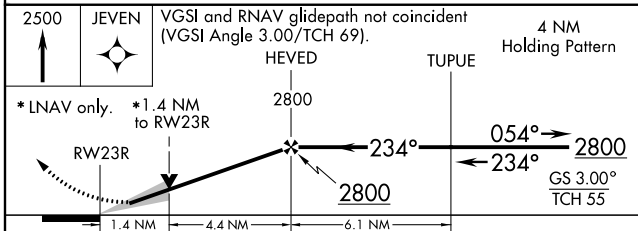
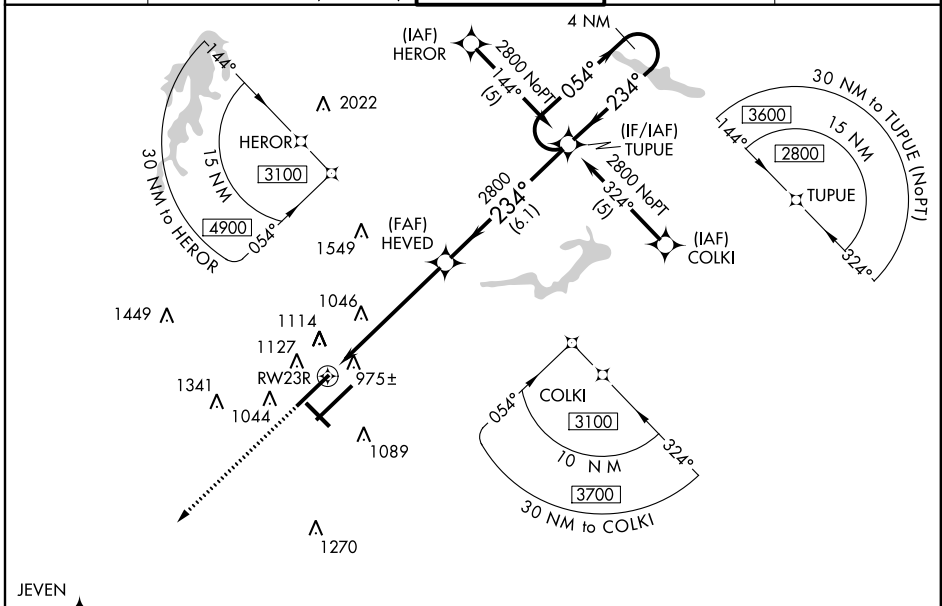
GREENSBORO/ PIEDMONT TRIAD INTL (GSO)

**▼** For uncompensated Baro-VNAV systems, LNAV/VNAV NA below -16°C (4°F) or above 47°C (116°F). DME/DME RNP-0.3 NA. Simultaneous approach authorized with ILS or LOC RWY 23L, ILS RWY 23L CAT (II). LNAV procedure NA during simultaneous operations. Use of FD or AP providing RNAV track guidance required during simultaneous operations.

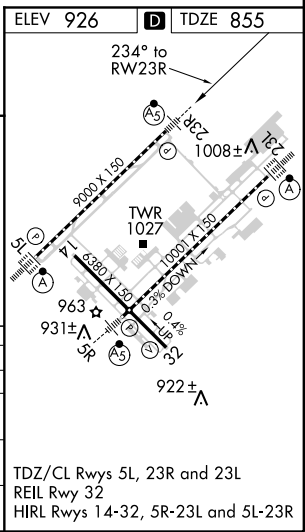


MISSED APPROACH: Climb to 2500 direct JEVEN and hold.

ATIS <b>128.55</b>	GREENSBORO APP CON <b>124.35 269.225</b> <b>118.5 327.075</b> (250°-049°) (050°-249°)	GREENSBORO TOWER <b>119.1 290.325</b>	GND CON <b>121.9 348.6</b>	CLNC DEL <b>121.75</b>
-----------------------	---	--	-------------------------------	---------------------------



CATEGORY	A	B	C	D
LPV DA	1055/24 200 (200-½)			
LNAV/VNAV DA	1405-1½ 550 (500-1½)			
LNAV MDA	1340/24 485 (500-½)	1340/40 485 (500-¾)	1340/50 485 (500-1)	
CIRCLING	1440-1 514 (600-1)	1440-1½ 514 (600-1½)	1480-2 554 (600-2)	



SE-2, 07 FEB 2013 to 07 MAR 2013

SE-2, 07 FEB 2013 to 07 MAR 2013