

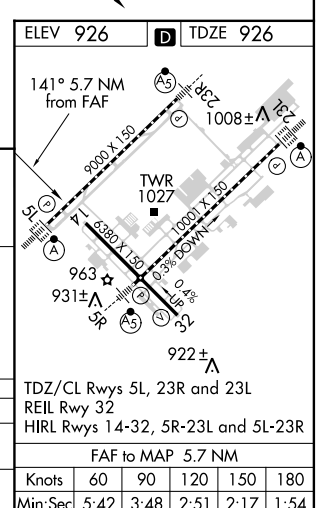
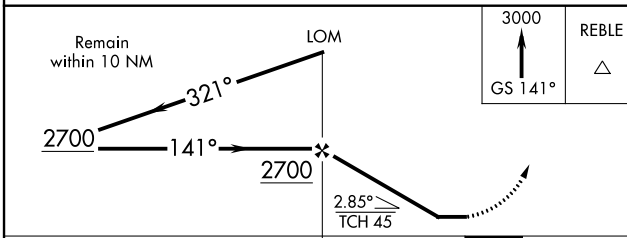
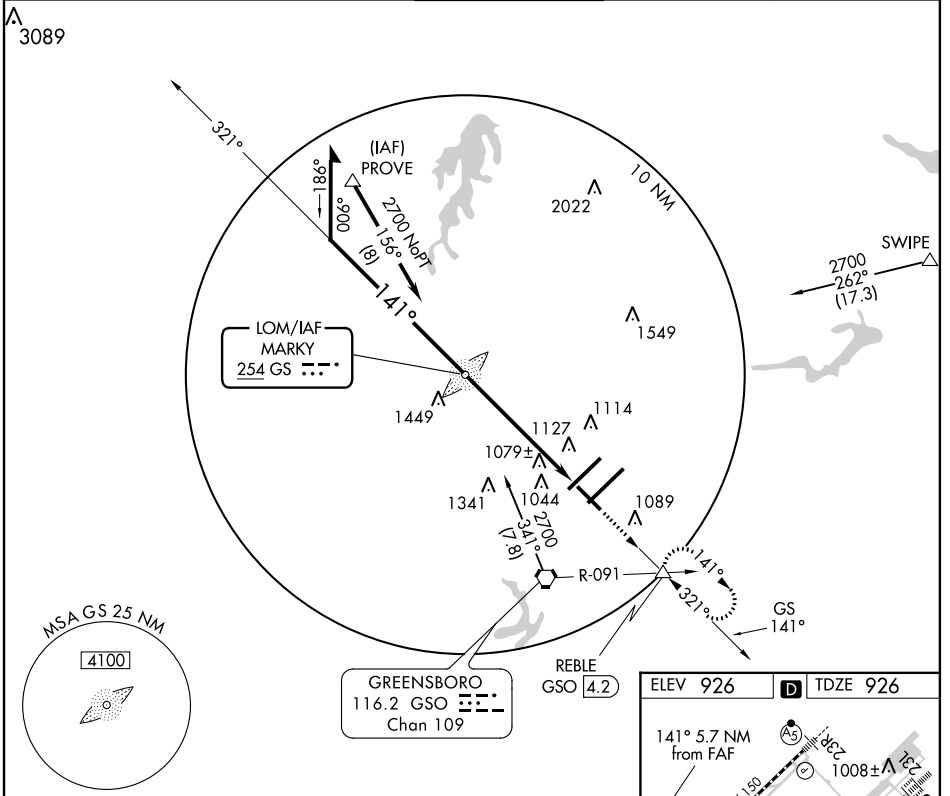
LOM GS	APP CRS	Rwy Idg	6380
254	141°	TDZE	926
		Apt Elev	926

NDB RWY 14

GREENSBORO/ PIEDMONT TRIAD INTL (GSO)

▽ MISSED APPROACH: Climb to 3000 via 141° bearing from GS LOM to REBLE INT and hold.

ATIS 128.55	GREENSBORO APP CON 124.35 269.225 (250° -049°) 118.5 327.075 (050° -249°)	GREENSBORO TOWER 119.1 290.325	GND CON 121.9 348.6	CLNC DEL 121.75
-----------------------	---	--	-------------------------------	---------------------------



CATEGORY	A	B	C	D
S-14	1440-1	514 (600-1)	1440-1½ 514 (600-1½)	1440-1¾ 514 (600-1¾)
CIRCLING	1440-1 514 (600-1)	1480-1 554 (600-1)	1480-1½ 554 (600-1½)	1480-2 554 (600-2)

FAF to MAP 5.7 NM					
Knots	60	90	120	150	180
Min:Sec	5:42	3:48	2:51	2:17	1:54

SE-2, 07 FEB 2013 to 07 MAR 2013

SE-2, 07 FEB 2013 to 07 MAR 2013