

LOC/DME I-LZY 111.9 Chan 56	APP CRS 054°	Rwy Idg TDZE 900 Apt Elev 926	10001
-------------------------------------------------	------------------------	---------------------------------------------------	--------------

ILS or LOC RWY 5R

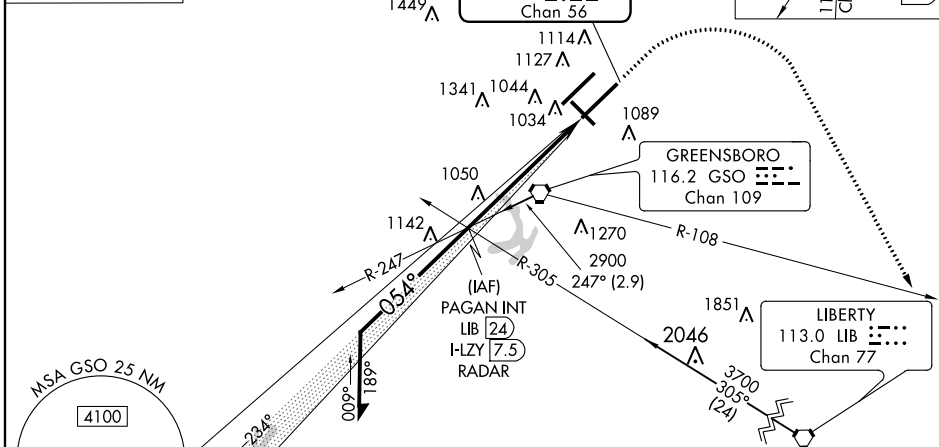
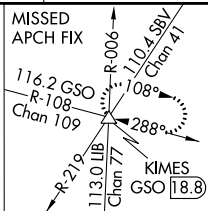
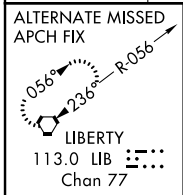
GREENSBORO/ PIEDMONT TRIAD INTL (GSO)

Simultaneous approach authorized with Rwy 5L.
 * RVR 1800 authorized with the use of FD or AP or HUD to DA.

MALSR

MISSED APPROACH: Climb to 1600 then climbing right turn to 3000 via heading 139° and GSO VORTAC R-108 to KIMES INT/GSO 18.8 DME and hold.

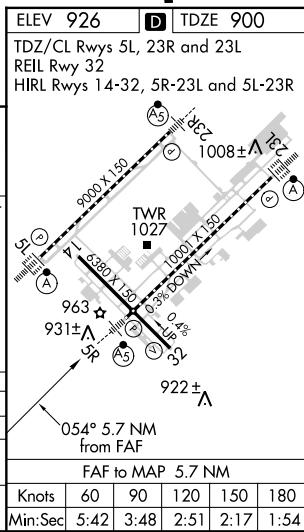
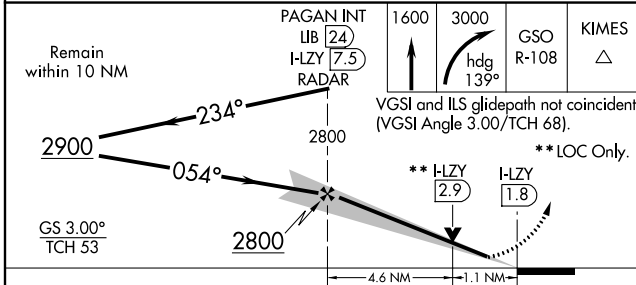
ATIS 128.55	GREENSBORO APP CON 124.35 269.225 (250° -049°) 118.5 327.075 (050° -249°)	GREENSBORO TOWER 119.1 290.325	GND CON 121.9 348.6	CLNC DEL 121.75
-----------------------	-----------------------------------------------------------------------------------------------	------------------------------------------	-------------------------------	---------------------------



SE-2, 07 FEB 2013 to 07 MAR 2013

SE-2, 07 FEB 2013 to 07 MAR 2013

ELEV 926	TDZE 900
TDZ/CL Rwys 5L, 23R and 23L	
REIL Rwy 32	
HIRL Rwys 14-32, 5R-23L and 5L-23R	



CATEGORY	A	B	C	D
S-ILS 5R		*1100/24	200 (200-½)	
S-LOC 5R	1320/24	420 (400-½)	1320/40	420 (400-¾)
CIRCLING	1440-1	514 (600-1)	1440-1½ 514 (600-1½)	1480-2 554 (600-2)