

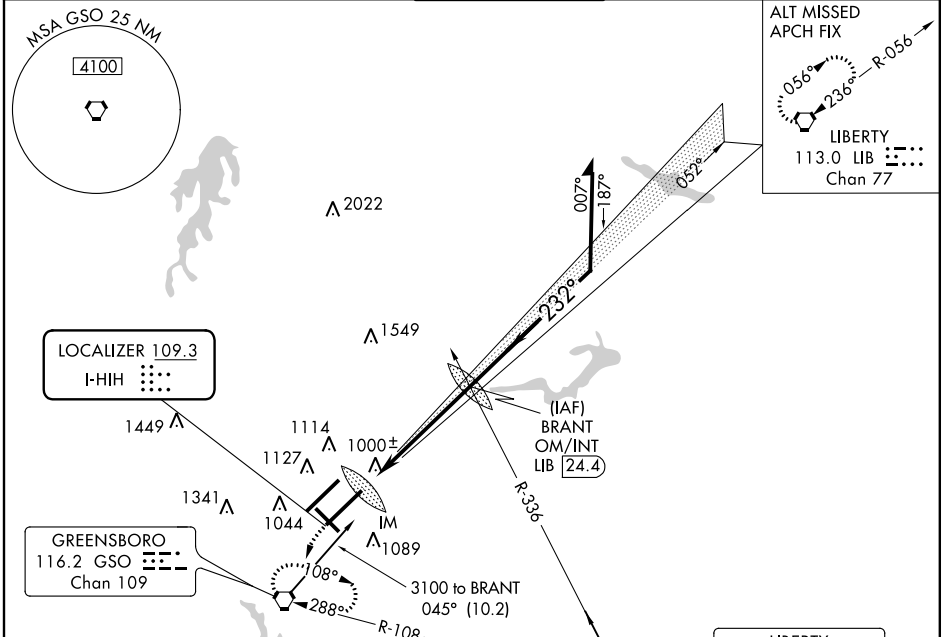
LOC I-HIH <b>109.3</b>	APP CRS <b>232°</b>	Rwy Idg TDZE Apt Elev	<b>9601</b> <b>889</b> <b>926</b>
---------------------------	------------------------	-----------------------------	---

# ILS or LOC RWY 23L

GREENSBORO/ PIEDMONT TRIAD INTL (GSO)

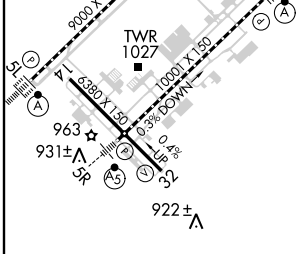
Simultaneous approach authorized with Rwy 23R. ALSF-2  
MISSED APPROACH: Climb to 1300 then climbing left turn to 3100 direct GSO VORTAC and hold, continue climb-in-hold to 3100.

ATIS <b>128.55</b>	GREENSBORO APP CON <b>124.35 269.225</b> (250° -049°) <b>118.5 327.075</b> (050° -249°)	GREENSBORO TOWER <b>119.1 290.325</b>	GND CON <b>121.9 348.6</b>	CLNC DEL <b>121.75</b>
-----------------------	---	--	-------------------------------	---------------------------



ALT MISSED APCH FIX  
LIBERTY  
113.0 LIB  
Chan 77

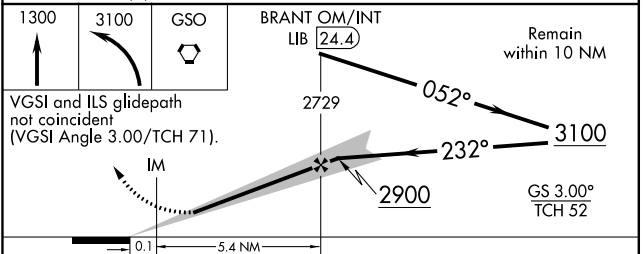
ELEV 926	TDZE 889
232° 5.5 NM from FAF	



TDZ/CL Rws 5L, 23R and 23L  
REIL Rwy 32  
HIRL Rws 14-32, 5R-23L and 5L-23R

FAF to MAP 5.5 NM

Knots	60	90	120	150	180
Min:Sec	5:30	3:40	2:45	2:12	1:50



CATEGORY	A	B	C	D
S-ILS 23L	1089/18 200 (200-½)			
S-LOC 23L	1260/24 371 (400-½)			1260/40 371 (400-¾)
CIRCLING	1440-1 514 (600-1)	1440-1½ 514 (600-1½)		1480-2 554 (600-2)

SE-2, 07 FEB 2013 to 07 MAR 2013

SE-2, 07 FEB 2013 to 07 MAR 2013