

LOC/DME I-LZY 111.9 Chan 56	APP CRS 054°	Rwy Idg 10001 TDZE 900 Apt Elev 926
---	------------------------	--

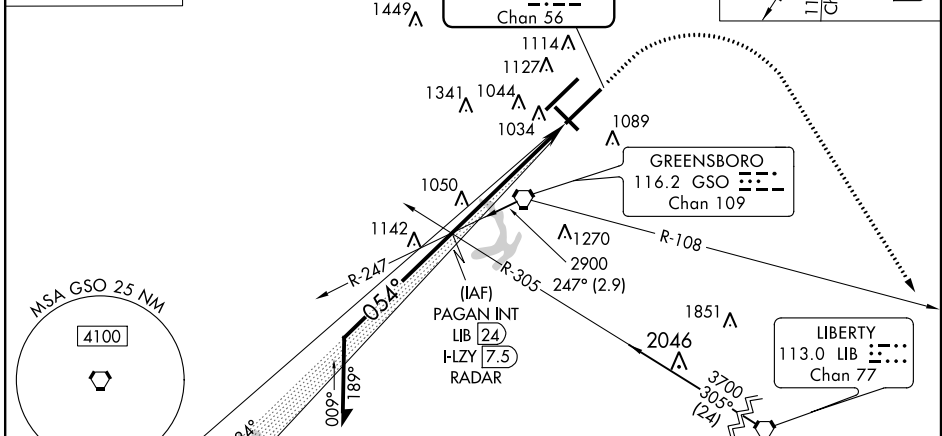
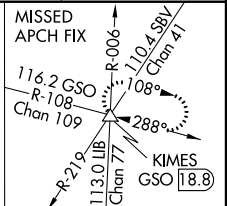
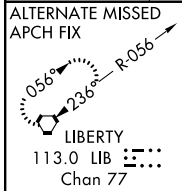
ILS RWY 5R (CAT II)

GREENSBORO/ PIEDMONT TRIAD INTL (GSO)

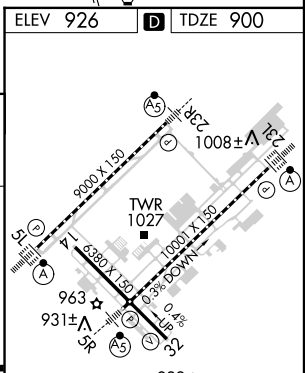
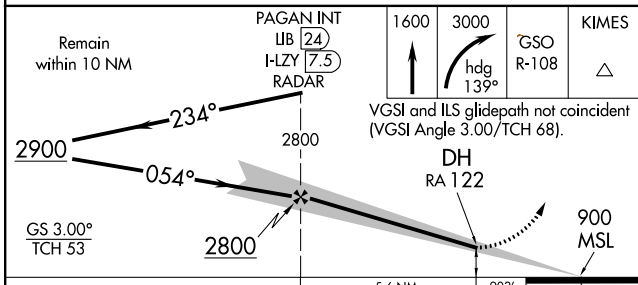
Procedure does not meet ICAO standard for ALSF/TDZ/CL lighting systems. Authorization to conduct this approach requires specific OPSSPEC approval or LOA for this runway. Simultaneous approach authorized with Rwy 5L.

MALSR
MISSED APPROACH: Climb to 1600 then climbing right turn to 3000 via heading 139° and GSO VORTAC R-108 to KIMES INT/ GSO 18.8 DME and hold.

ATIS 128.55	GREENSBORO APP CON 124.35 269.225 (250°-049°) 118.5 327.075 (050°-249°)	GREENSBORO TOWER 119.1 290.325	GND CON 121.9 348.6	CLNC DEL 121.75
-----------------------	---	--	-------------------------------	---------------------------



ELEV 926	TDZE 900
----------	----------



CATEGORY	A	B	C	D
S-ILS 5R	RA 122/12 100 DA 1000			

CATEGORY II ILS - SPECIAL AIRCREW & AIRCRAFT CERTIFICATION REQUIRED

TDZ/CL Rwy 5L, 23R and 23L
REIL Rwy 32
HIRL Rwy 14-32, 5R-23L and 5L-23R

SE-2, 07 FEB 2013 to 07 MAR 2013

SE-2, 07 FEB 2013 to 07 MAR 2013