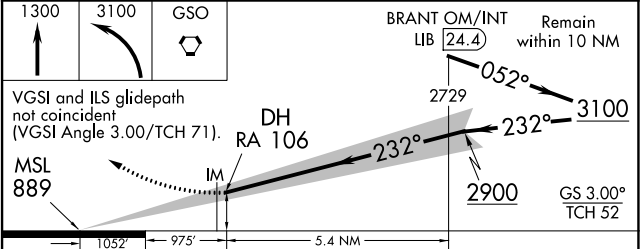
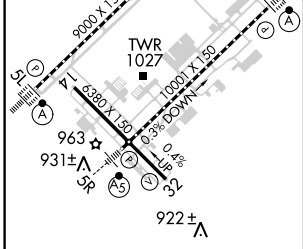
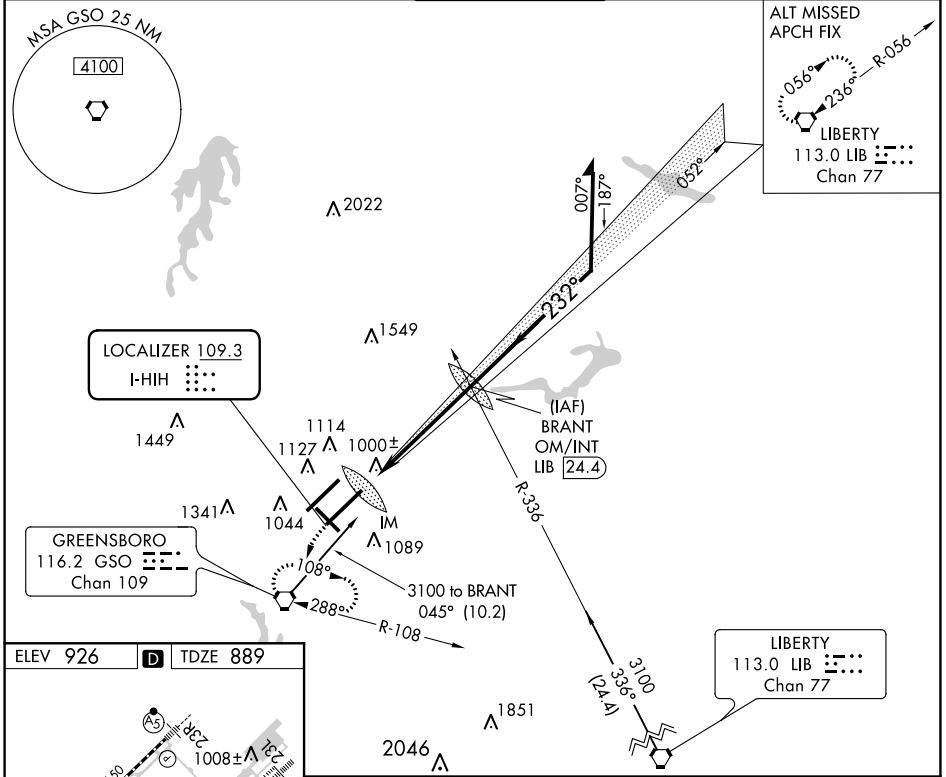


LOC I-HIH <b>109.3</b>	APP CRS <b>232°</b>	Rwy Idg TDZE Apt Elev	<b>9601</b> <b>889</b> <b>926</b>
---------------------------	------------------------	-----------------------------	---

**ILS RWY 23L (CAT II)**  
GREENSBORO/PIEDMONT TRIAD INTL (GSO)

Simultaneous approach authorized with Rwy 23R.	ALSF-2 	MISSED APPROACH: Climb to 1300 then climbing left turn to 3100 direct GSO VORTAC and hold, continue climb-in-hold to 3100.
--	------------	--

ATIS <b>128.55</b>	GREENSBORO APP CON <b>124.35 269.225</b> (250° -049°) <b>118.5 327.075</b> (050° -249°)	GREENSBORO TOWER <b>119.1 290.325</b>	GND CON <b>121.9 348.6</b>	CLNC DEL <b>121.75</b>
-----------------------	---	--	-------------------------------	---------------------------



CATEGORY	A	B	C	D
S-ILS 23L		RA 106/12 100	DA 989	

**CATEGORY II ILS - SPECIAL AIRCREW & AIRCRAFT CERTIFICATION REQUIRED**

TDZ/CL Rws 5L, 23R and 23L  
REIL Rwy 32  
HIRL Rws 14-32, 5R-23L and 5L-23R

SE-2, 07 FEB 2013 to 07 MAR 2013

SE-2, 07 FEB 2013 to 07 MAR 2013