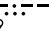
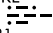


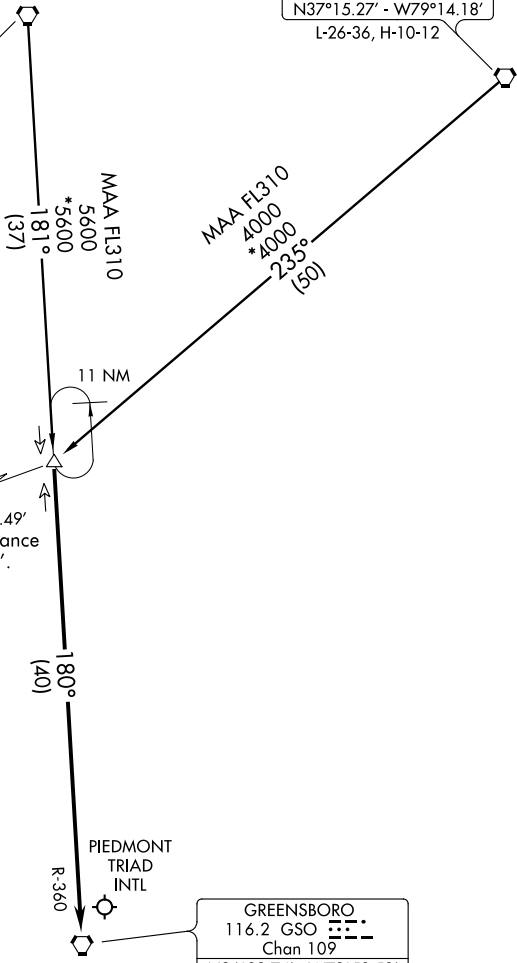
HENBY TWO ARRIVAL (HENBY.HENBY2)

GREENSBORO, NORTH CAROLINA

GREENSBORO ATIS
128.55
WINSTON-SALEM ATIS
121.3
GREENSBORO APP CON
124.35 269.225 (250°-049°)
118.5 327.075 (050°-249°)

LYNCHBURG
109.2 LYH 
Chan 29
N37°15.27' - W79°14.18'
L-26-36, H-10-12

ROANOKE
109.4 ROA 
Chan 31
N37°20.61' - W80°04.22'
L-26, H-10-12



SE-2, 07 FEB 2013 to 07 MAR 2013

SE-2, 07 FEB 2013 to 07 MAR 2013

NOTE: DME Required.

NOTE: Chart not to scale.

LYNCHBURG TRANSITION (LYH.HENBY2): From over LYH VORTAC via LYH R-235 to HENBY INT. Thence. . . .

ROANOKE TRANSITION (ROA.HENBY2): From over ROA VORTAC via ROA R-181 to HENBY INT. Thence. . . .

. . . .From over HENBY INT via GSO R-360 to GSO VORTAC. Expect radar vectors to final approach course.

HENBY TWO ARRIVAL (HENBY.HENBY2)

GREENSBORO, NORTH CAROLINA