

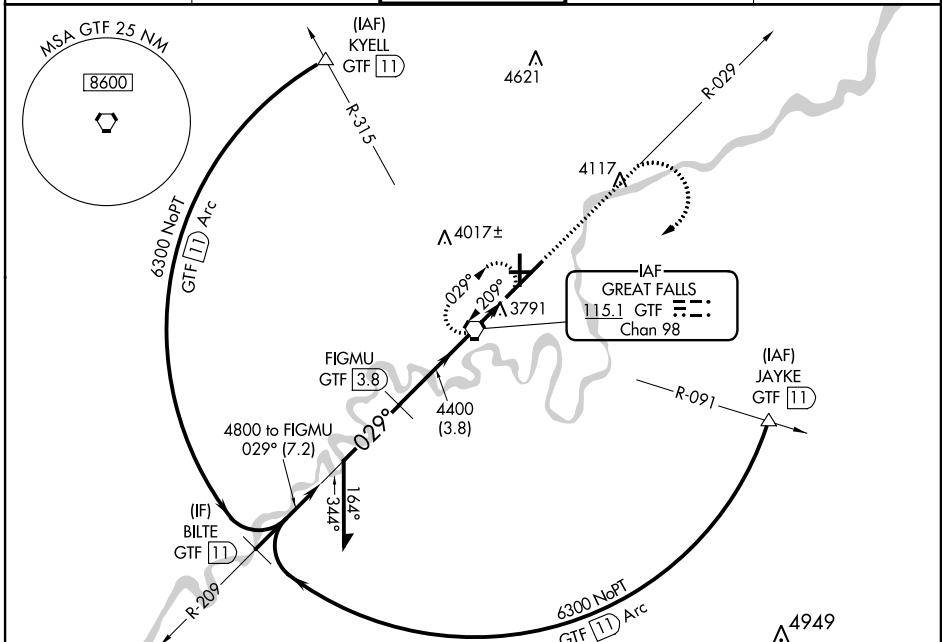
VOR/DME RWY 3

GREAT FALLS INTL (GTF)

VORTAC GTF 115.1 Chan 98	APP CRS 029°	Rwy Idg 10502 TDZE 3680 Apt Elev 3680
--	------------------------	--

ALSF-2
 MISSED APPROACH: Climb to 5000 via GTF VORTAC R-029 then climbing right turn to 6300 direct GTF VORTAC and hold, continue climb-in-hold to 6300.

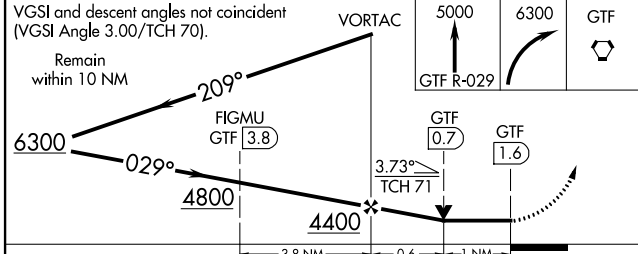
ATIS 126.6 269.0	GREAT FALLS APP CON 128.6 379.17	GREAT FALLS TOWER 118.7 282.2	GND CON 121.7 348.6	CLNC DEL 121.7 348.6
----------------------------	--	---	-------------------------------	--------------------------------



NW-1, 07 FEB 2013 to 07 MAR 2013

NW-1, 07 FEB 2013 to 07 MAR 2013

ELEV 3680	D THRE 3680
TDZ/CL Rwy 3	
REIL Rwy 21	
MIRL Rwy 7-25	
HIRL Rws 3-21 and 16-34	



CATEGORY	A	B	C	D
S-3	4060/24	380 (400-½)		4060/50 380 (400-1)
CIRCLING	4120-1 440 (500-1)	4140-1 460 (500-1)	4140-1½ 460 (500-1½)	4240-2 560 (600-2)

